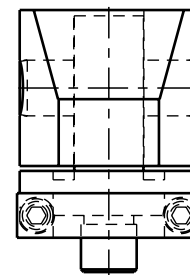
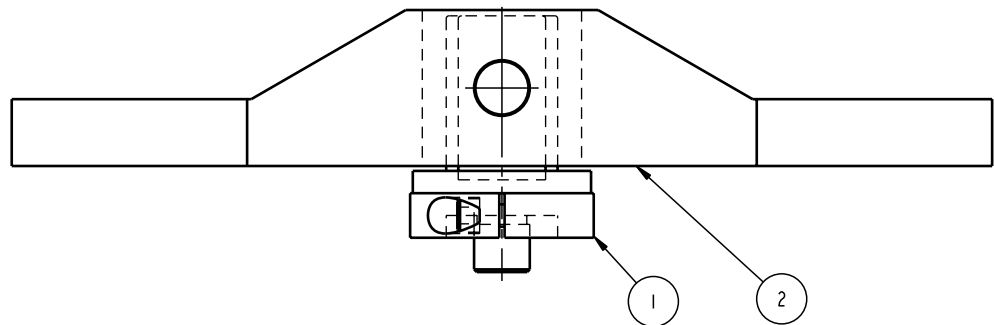


ILC91521810 REV A ECN 739



2	1	ILC91521809	ARM, SC, ROCKER, 5000
1	1	ILC91521808	ATCH, RKRA, 5000
No. QTY		PART No.	DESCRIPTION

**CAD CONTROL
DRAWING**



VEKTEK, INC.
1334 E. SIXTH AVE. P.O. BOX 625
EMPORIA, KS. 66801 U.S.A.

A	739	RELEASE	K. ROEMER	03-21-05	91521810	A	ASSY, RKRA, SC, 5000
REV	IN ACCORDANCE WITH ECN	EFFECTIVE DATE	REVISED BY	DATE	REFERENCE MODEL	REF REV	
DRW BY:	K. ROEMER	DRAWING STATUS: Released			TOLERANCES DO NOT APPLY	SIZE	ILC91521810
DATE:	10/23/02	PRODUCTION APPROVED FOR RELEASED STATUS ONLY			DIMENSIONS ARE NOMINAL	D	REV A

FORM FEG036, Rev. A

SHEET 1 OF 1