

1

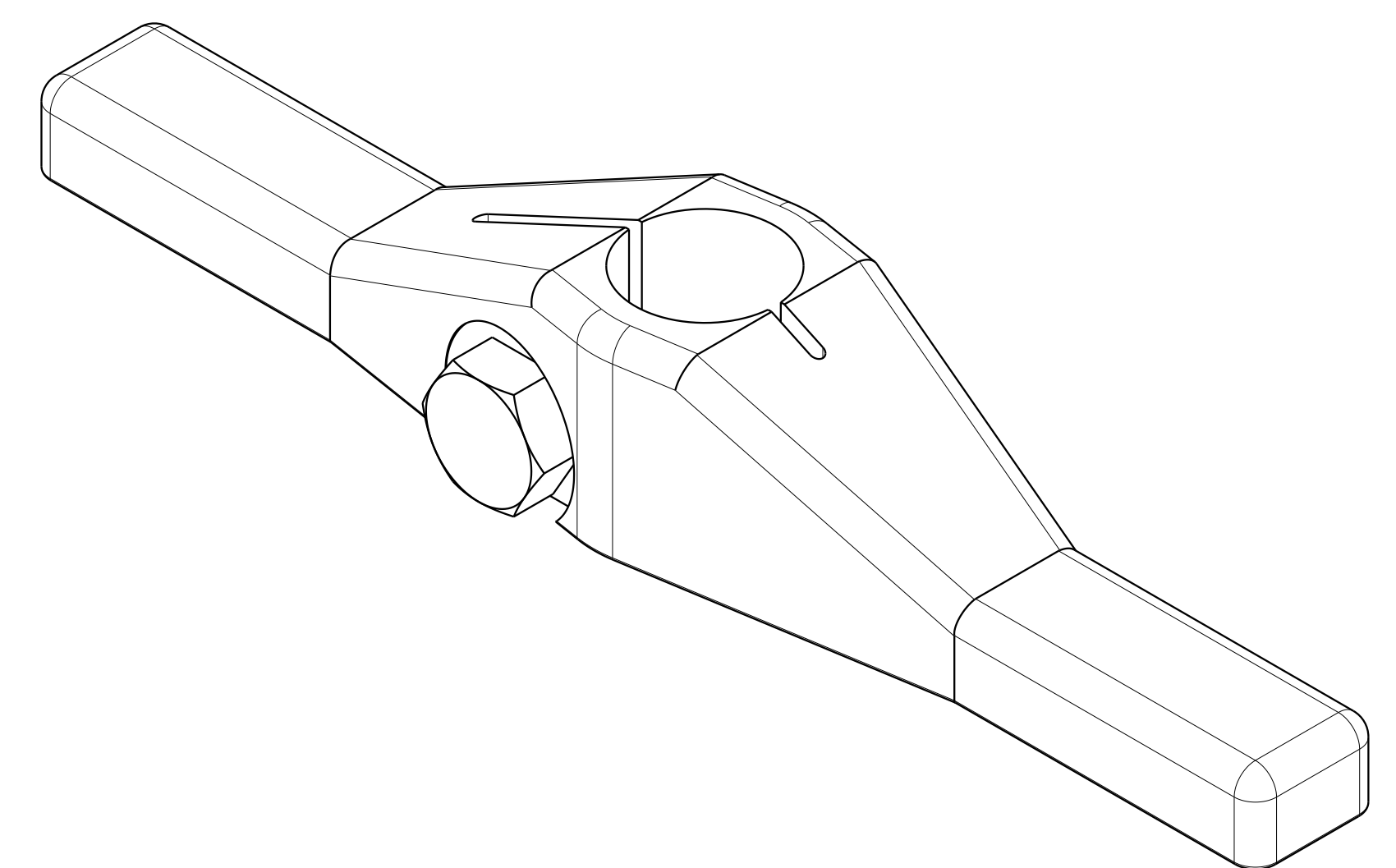
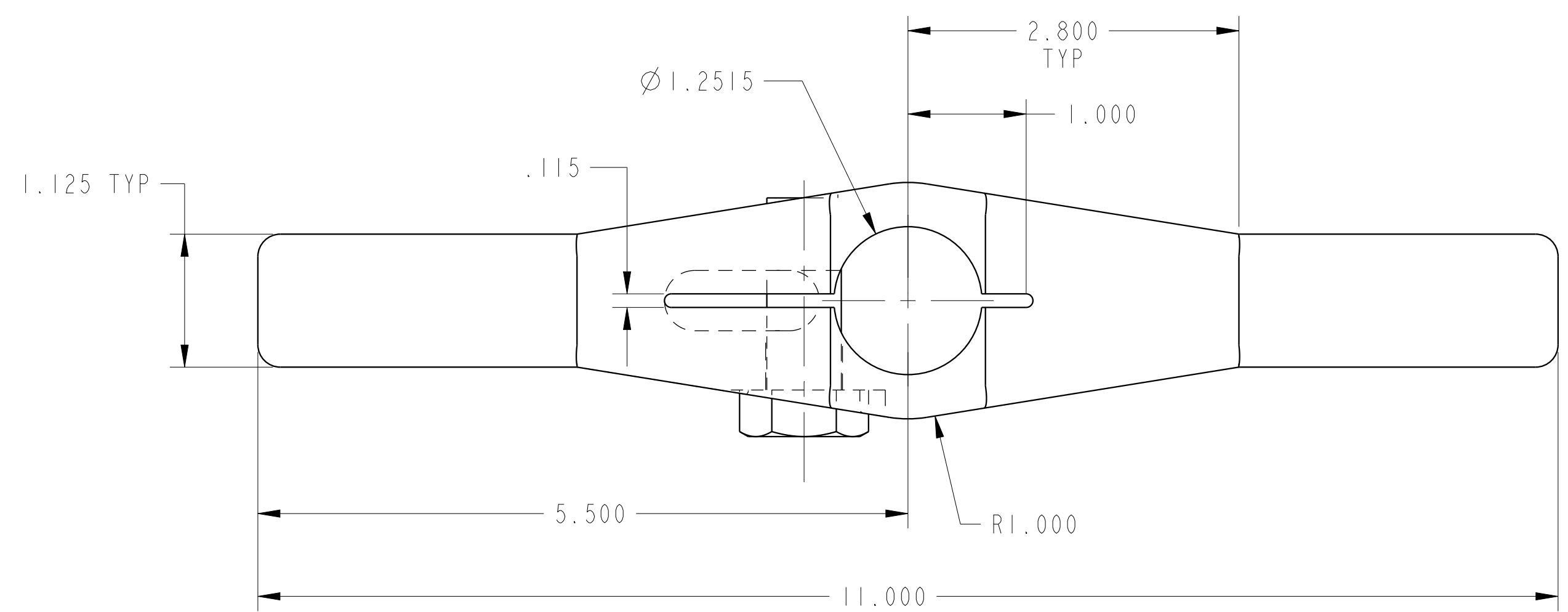
2

3

4

D

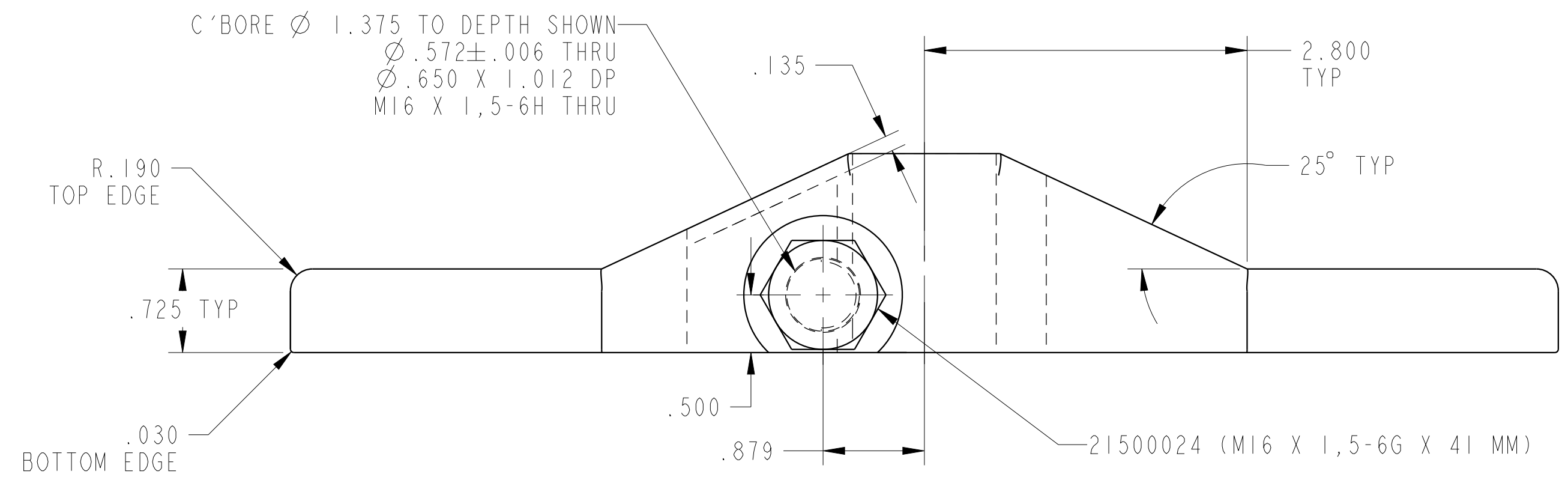
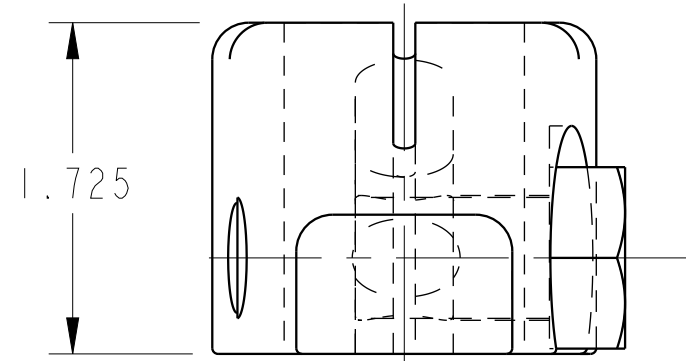
D



ILC91521814 REV C ECN 4064

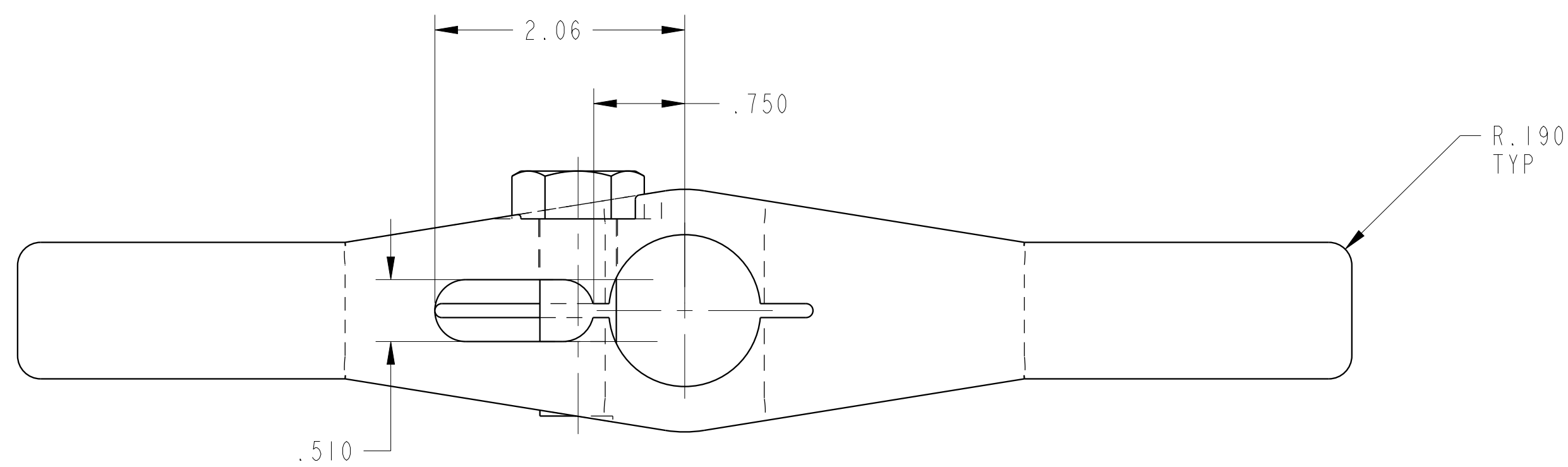
C

C



B

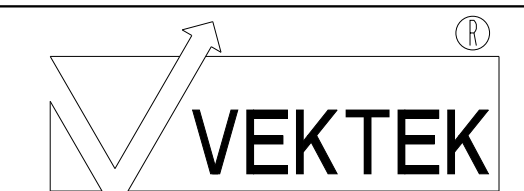
B



A

A

CAD CONTROL DRAWING



VEKTEK, INC.
1334 E. SIXTH AVE. P.O. BOX 625
EMPORIA, KS. 66801 U.S.A.

C	4064	RELEASE	NPETERS	2/4/20	91521814	J	ARM, SC, LP, DBL, 5000
REV	IN ACCORDANCE WITH ECN	EFFECTIVE DATE	REVISED BY	DATE	REFERENCE MODEL	REF REV	***
DRW BY:	K. ROEMER	DRAWING STATUS: Released			TOLERANCES DO NOT APPLY		SIZE
DATE:	07-29-02	PRODUCTION APPROVED FOR RELEASED STATUS ONLY			DIMENSIONS ARE NOMINAL		D ILC91521814 REV C

1

2

3

4

SHEET 1 OF 1