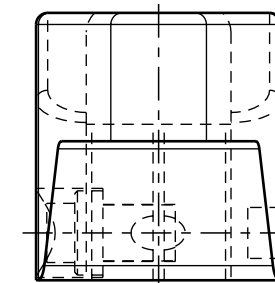
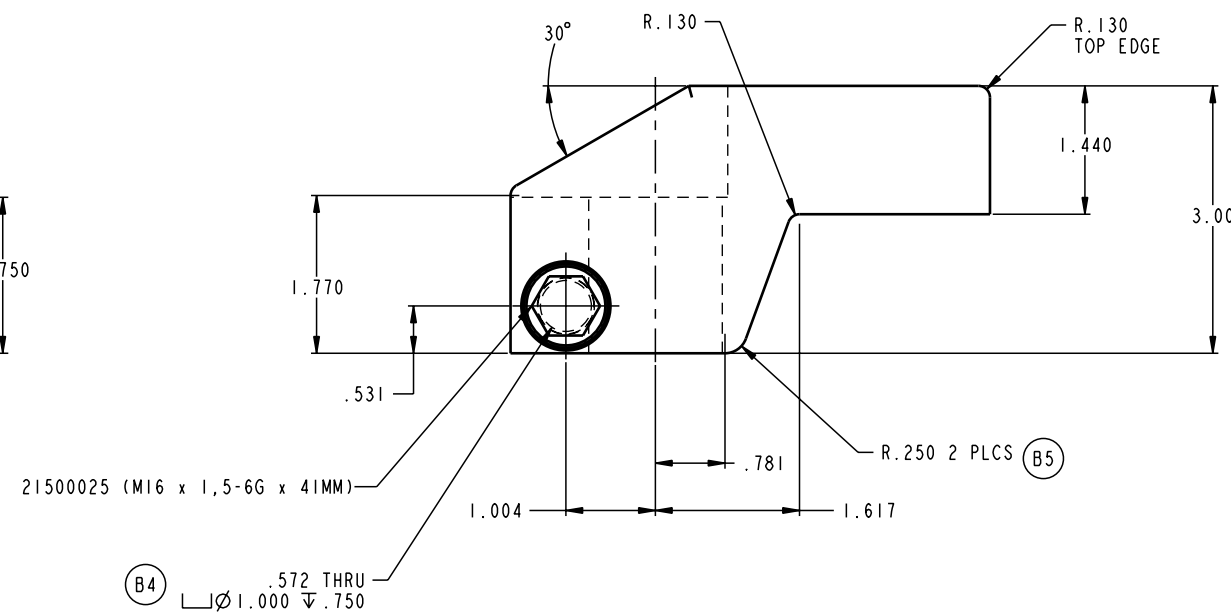
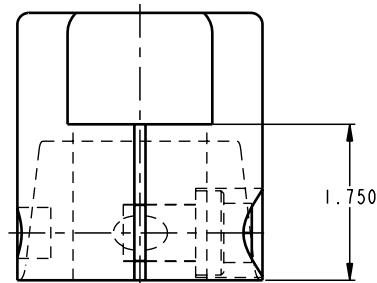


ILC91522109 REV B ECN 1267



CAD CONTROL DRAWING



VEKTEK, INC.
1334 E. SIXTH AVE. P.O. BOX 625
EMPORIA, KS. 66801 U.S.A.

B	1267	RELEASE	K. ROEMER	04-11-05	91522109	D	ARM, SC, LP, UPREACH, 7500
REV	IN ACCORDANCE WITH ECN	EFFECTIVE DATE	REVISED BY	DATE	REFERENCE MODEL	REF REV	
DRW BY:	K. ROEMER	DRAWING STATUS: Released			TOLERANCES DO NOT APPLY DIMENSIONS ARE NOMINAL		SIZE D
DATE:	07-24-02	PRODUCTION APPROVED FOR RELEASED STATUS ONLY			ILC91522109		REV B

FORM FEG036, Rev. A

SHEET 1 OF 1