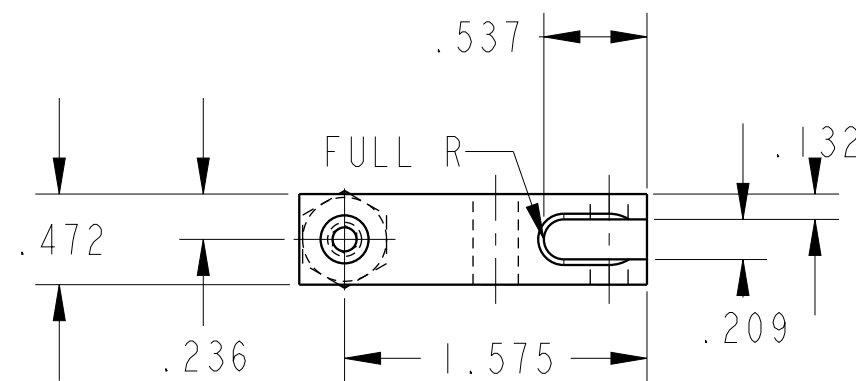
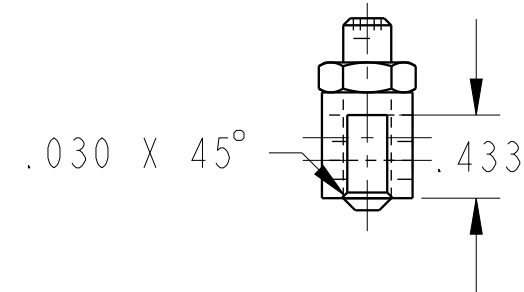
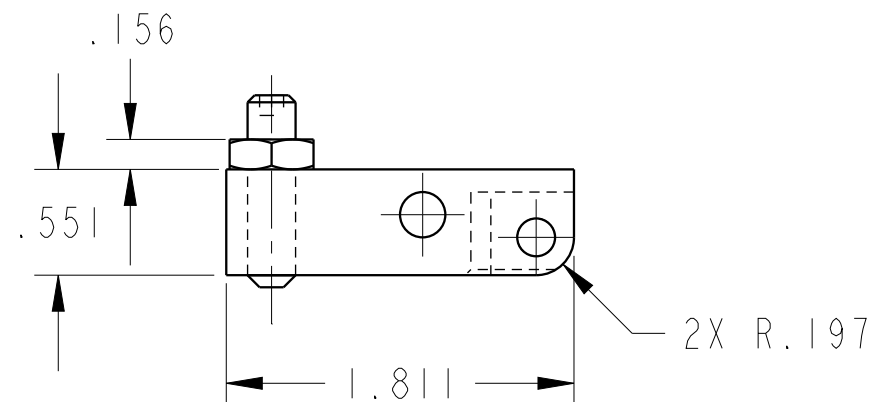
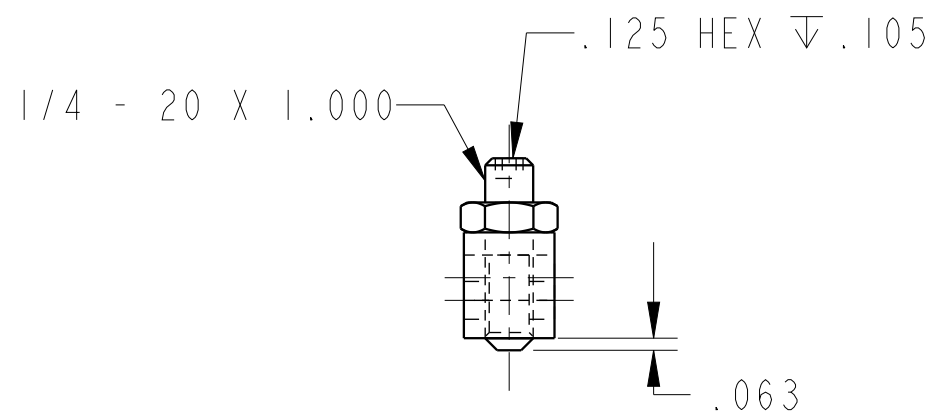
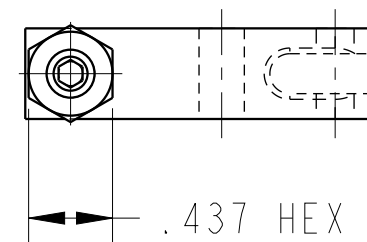



ILC91611201 REV A ECN 3076



CAD CONTROL DRAWING		
	VEKTEK, INC. 1334 E. SIXTH AVE. P.O. BOX 625 EMPORIA, KS. 66801 U.S.A.	

A	3076	RELEASE	BCD	08-22-16	91611201	A	LEVER, LC, TL360, 6001b
REV	IN ACCORDANCE WITH ECN	EFFECTIVE DATE	REVISED BY	DATE	REFERENCE MODEL	REF REV	
DRW BY:	BCD	DRAWING STATUS: <b>Released</b>			TOLERANCES DO NOT APPLY DIMENSIONS ARE NOMINAL		SIZE B
DATE:	07/13/16	PRODUCTION APPROVED FOR RELEASED STATUS ONLY					ILC91611201 REV A

FORM FEG036, Rev. B

SHEET 1 OF 1