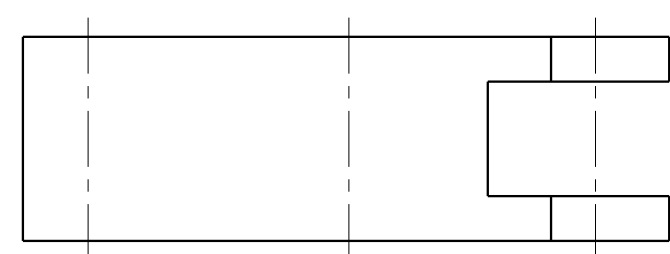
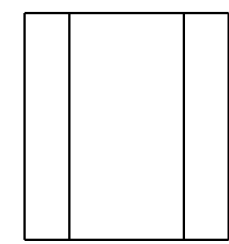
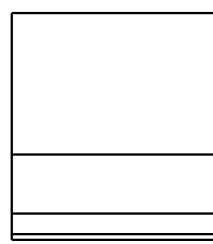
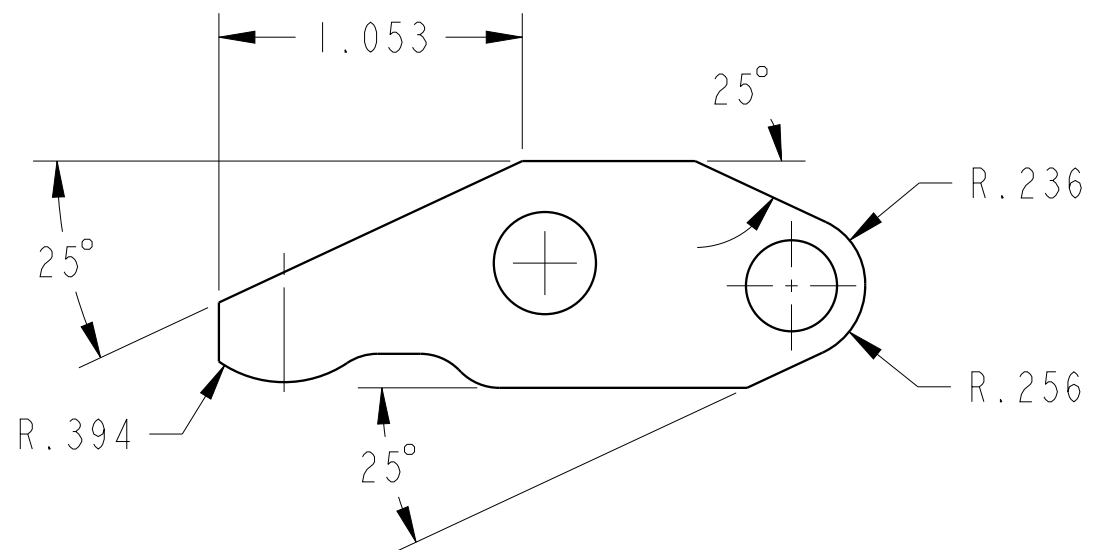
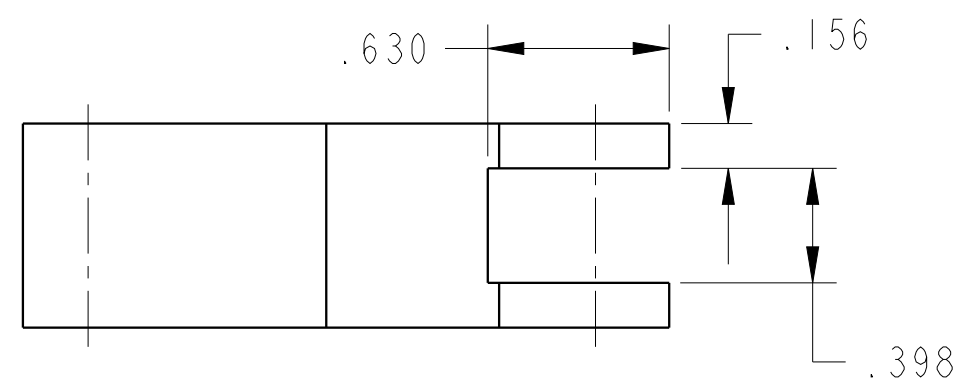


ILC91612220 REV B ECN 4344



B	4344	RELEASE	ALS	12/29/20
REV	IN ACCORDANCE WITH ECN	EFFECTIVE DATE	REVISED BY	DATE
DRW BY:	A. THOMSEN	DRAWING STATUS: Released		
DATE:	11-NOV-2019	PRODUCTION APPROVED FOR RELEASED STATUS ONLY		

CAD CONTROL DRAWING			
		VEKTEK, INC. 1334 E. SIXTH AVE. P.O. BOX 625 EMPORIA, KS. 66801 U.S.A.	
91612220	A	LEVER, TL360-TWIN, 2600 LB	
TOLERANCES DO NOT APPLY DIMENSIONS ARE NOMINAL	SIZE B	ILC91612220	REV B