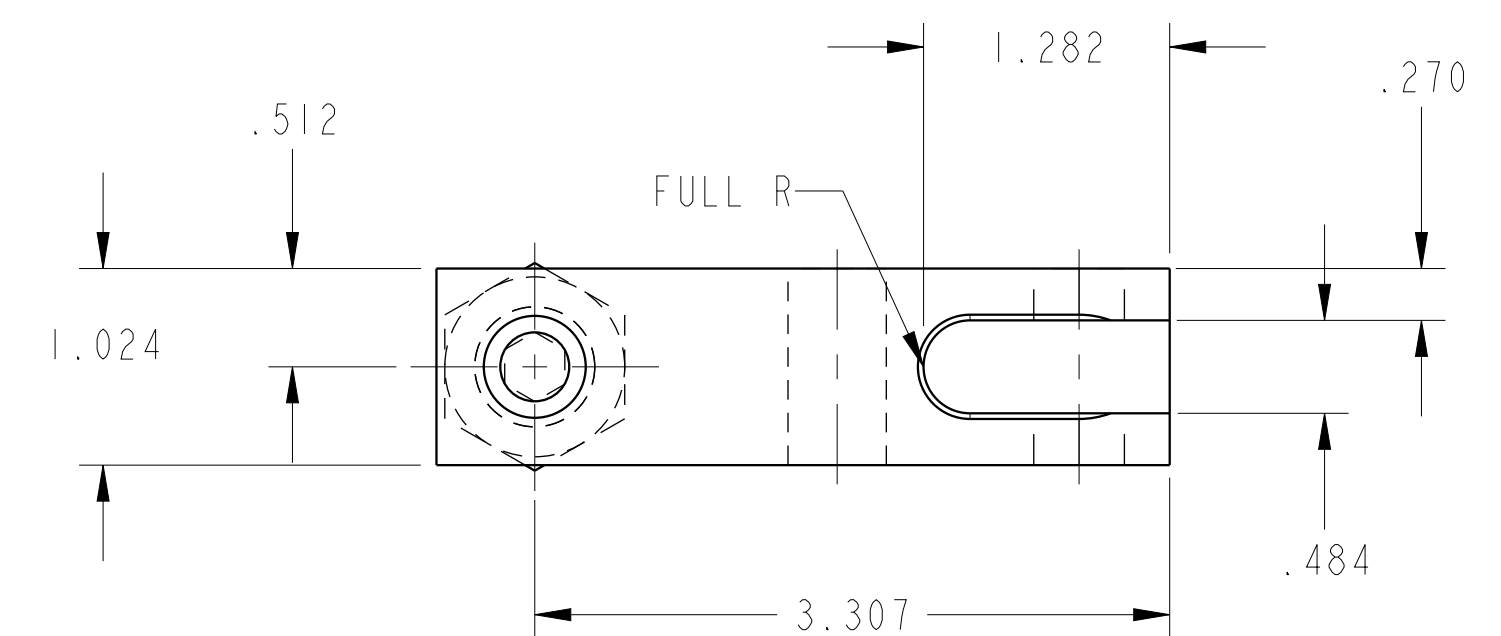
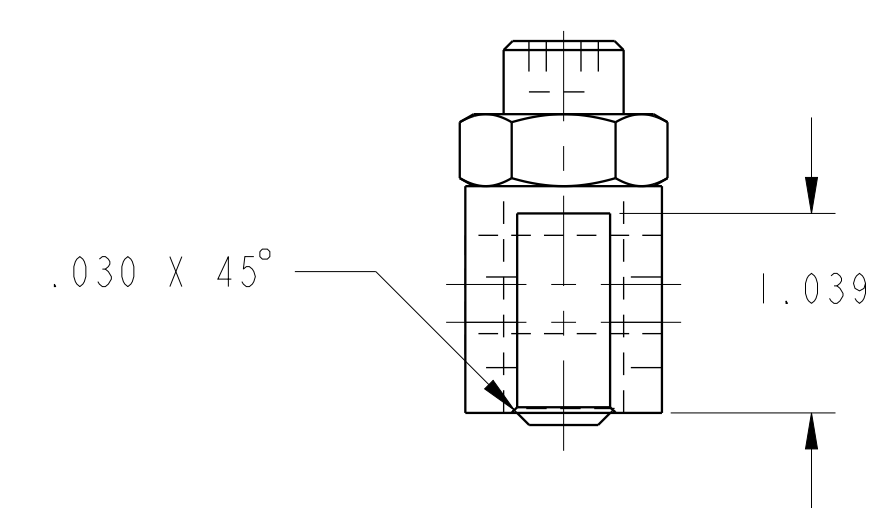
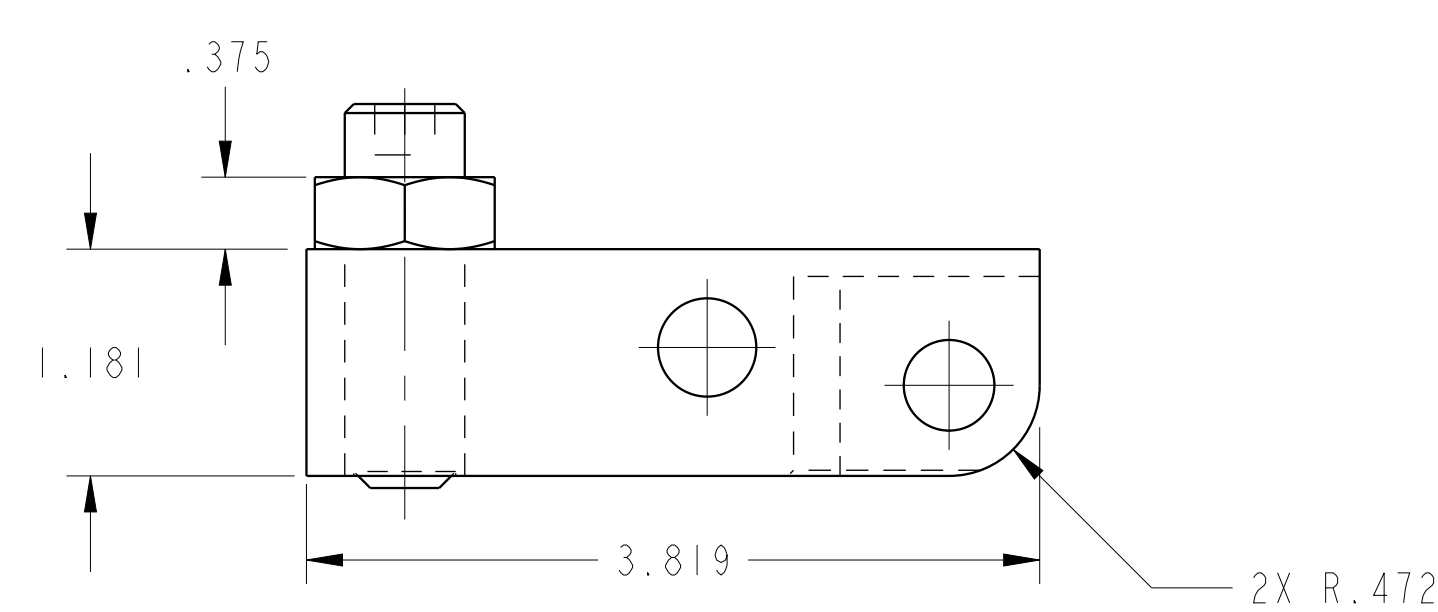
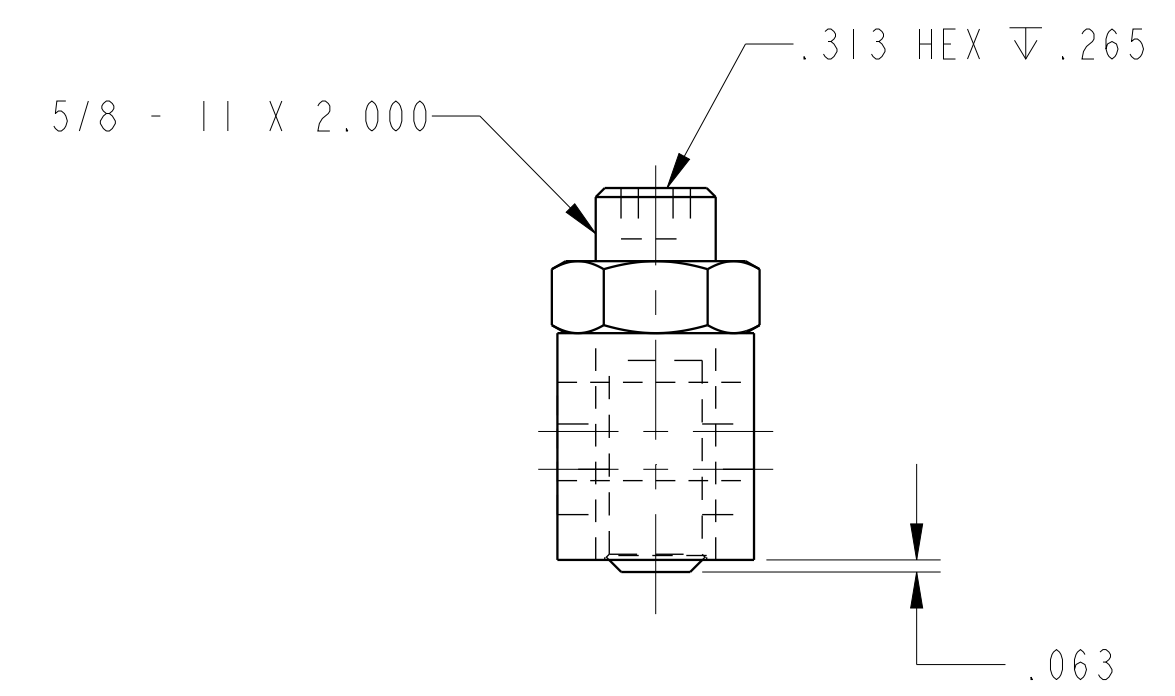
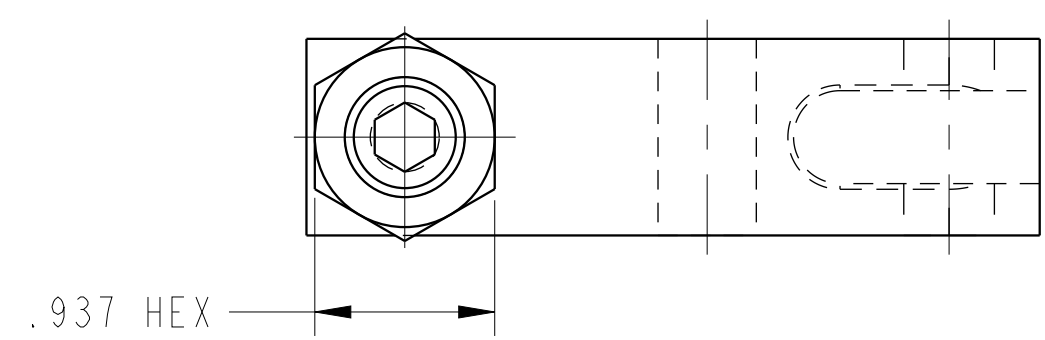


1LC91612801 REV A ECN 3076



CAD CONTROL DRAWING			
		VEKTEK, INC. 1334 E. SIXTH AVE. P.O. BOX 625 EMPORIA, KS. 66801 U.S.A.	

A	3076	RELEASE	BCD	08-22-16	91612801	A	LEVER, LC, TL360, 36001b
REV	IN ACCORDANCE WITH ECN	EFFECTIVE DATE	REVISED BY	DATE	REFERENCE MODEL	REF REV	
DRW BY: BCD		DRAWING STATUS: Released			TOLERANCES DO NOT APPLY		SIZE
DATE: 07/13/16		PRODUCTION APPROVED FOR RELEASED STATUS ONLY			DIMENSIONS ARE NOMINAL		D
					1LC91612801		REV A