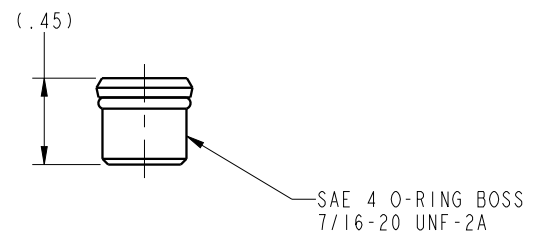
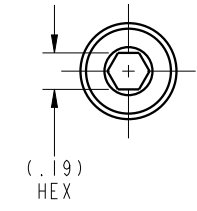

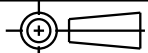
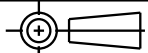


ILC92090001 REV A ECN 2791



| | | | | | | | | |
|---|------------------------|--|------------|---|-----------------|-------------------------|--------------------------|-------------|
| CAD CONTROL DRAWING | | | |  VEKTEK, INC. 1334 E. SIXTH AVE. P.O. BOX 625 EMPORIA, KS. 66801 U.S.A. | | | | |
|  | | | |  | | | | |
| A | 2791 | RELEASE | MAJ | 2/6/15 | 92090001 | I | FITTING, BREATHER, SAE 4 | |
| REV | IN ACCORDANCE WITH ECN | EFFECTIVE DATE | REVISED BY | DATE | REFERENCE MODEL | REF REV | ***** | |
| DRW BY: | K. ROEMER | DRAWING STATUS: Released | | | | TOLERANCES DO NOT APPLY | SIZE | ILC92090001 |
| DATE: | 08-11-05 | PRODUCTION APPROVED FOR RELEASED STATUS ONLY | | | | DIMENSIONS ARE NOMINAL | B | |
| | | | | | | | REV | A |
| | | | | | | | FORM FEG036, Rev. B | |