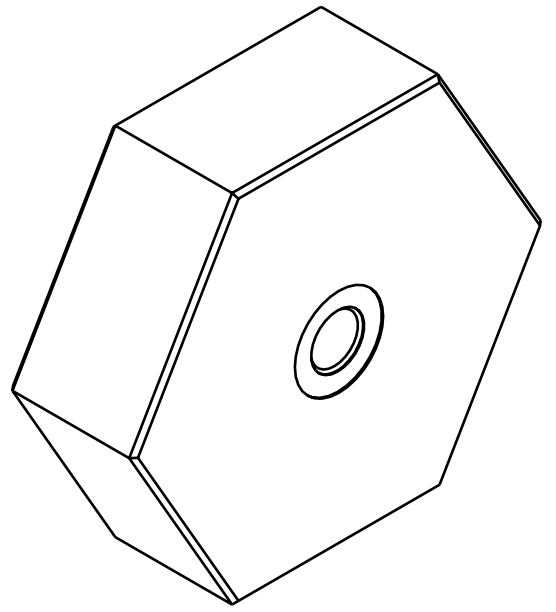
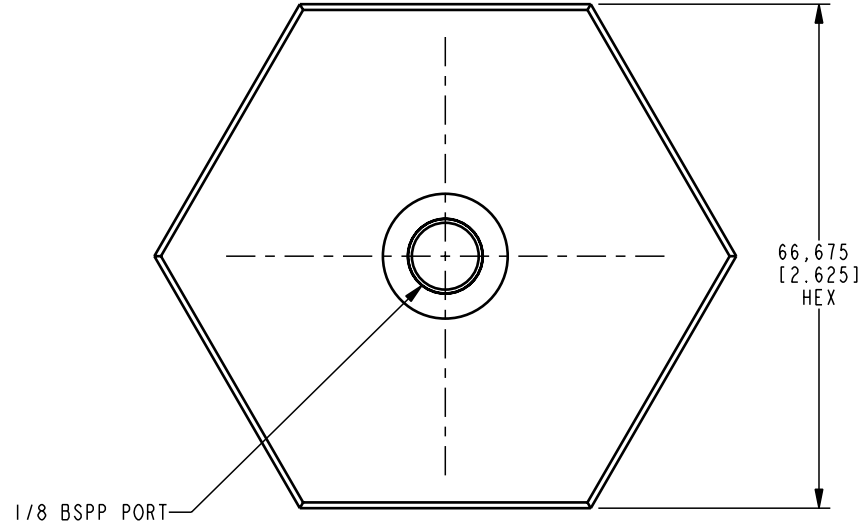
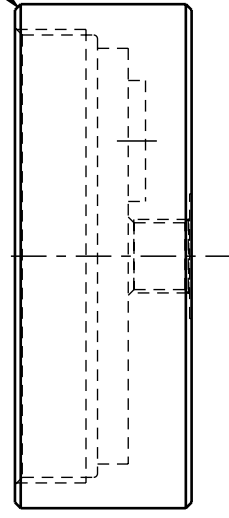
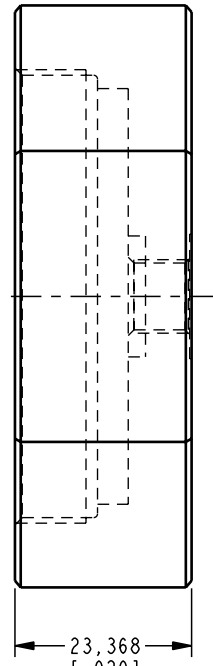


2 1/4-16 UN-2B ∇ 9,398
 [.370]
 MINOR ∇ 58,522 ∇ 10,922
 [2.304] [.430]
 ∇ 54,991 ∇ 14,986
 [2.165] [.590]

45° X 0,76
 [.03]
 TYP



ILCM40987247 REV A ECN 1441

**CAD CONTROL
 DRAWING**



VEKTEK, INC.
 1334 E. SIXTH AVE. P.O. BOX 625
 EMPORIA, KS. 66801 U.S.A.

A	1441	RELEASE	K. ROEMER	02-24-06	40987247	E	CAP, FEEDER, WS, FA, 4000
REV	IN ACCORDANCE WITH ECN	EFFECTIVE DATE	REVISED BY	DATE	REFERENCE MODEL	REF REV	*****
DRW BY:	K. ROEMER	DRAWING STATUS: Released			TOLERANCES DO NOT APPLY	UNITS	SIZE
DATE:	08-23-05	PRODUCTION APPROVED FOR RELEASED STATUS ONLY			DIMENSIONS ARE NOMINAL	mm [inch]	B

ILCM40987247 REV A

FORM FEG036, Rev. A