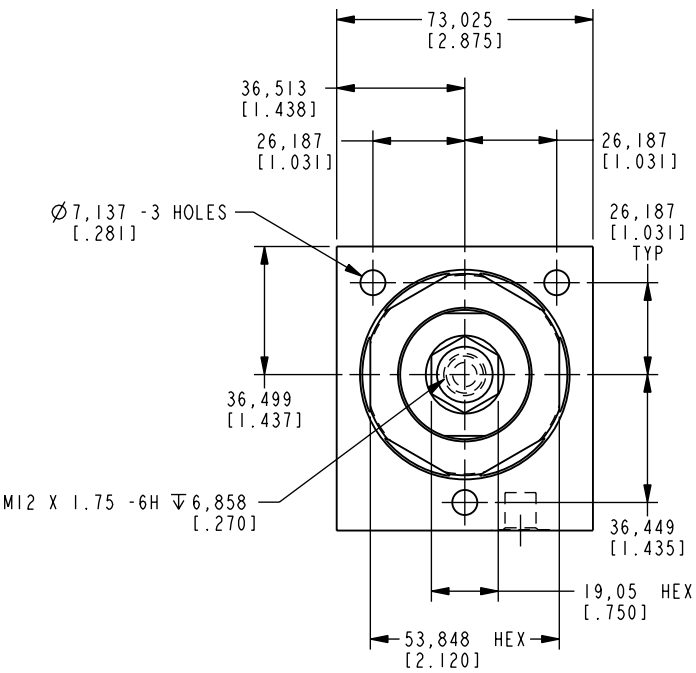
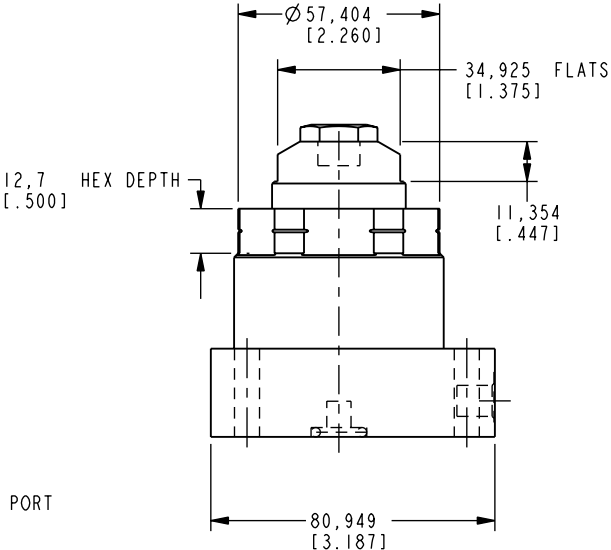
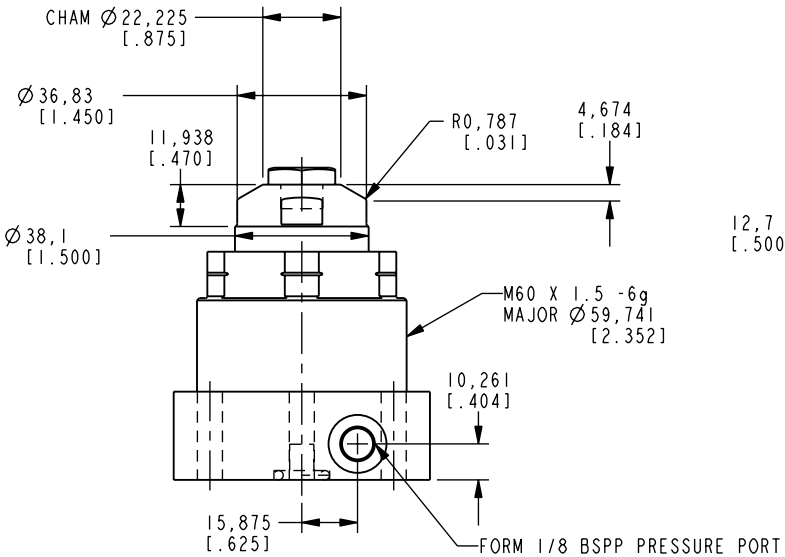
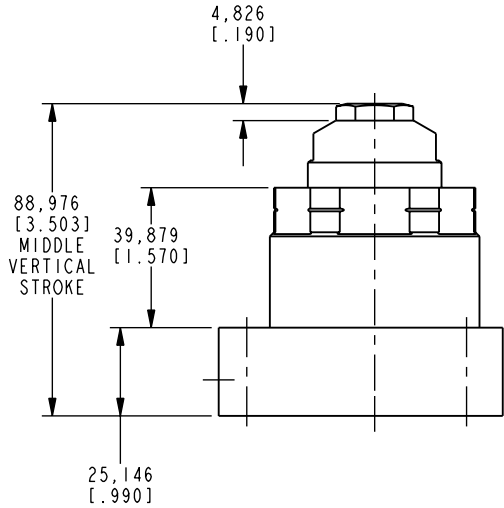


SAE 2 O-RING PRESSURE PORT

ILCM41007005 REV D ECN 2447



CAD CONTROL DRAWING



VEKTEK, INC.
1334 E. SIXTH AVE. P.O. BOX 625
EMPORIA, KS. 66801 U.S.A.

D 2447	RELEASE	JDW	09/06/12	41007005	C	WS, FA, BM, 17 Kn
REV IN ACCORDANCE WITH ECN	EFFECTIVE DATE	REVISED BY	DATE	REFERENCE MODEL	REF REV	
DRW BY: JDW	DRAWING STATUS: Released			TOLERANCES DO NOT APPLY	UNITS	SIZE
DATE: 1-9-09	PRODUCTION APPROVED FOR RELEASED STATUS ONLY			DIMENSIONS ARE NOMINAL	mm [inch]	D ILCM41007005 REV D

FORM FEG036, Rev. B