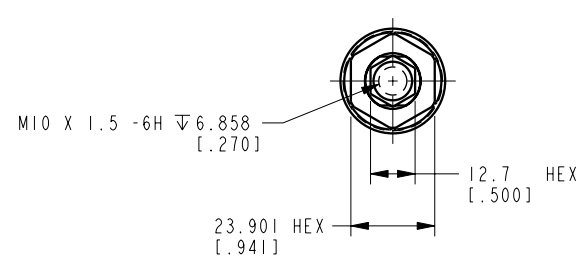
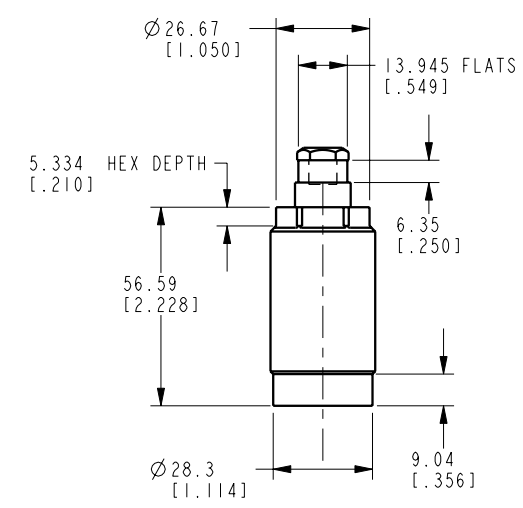
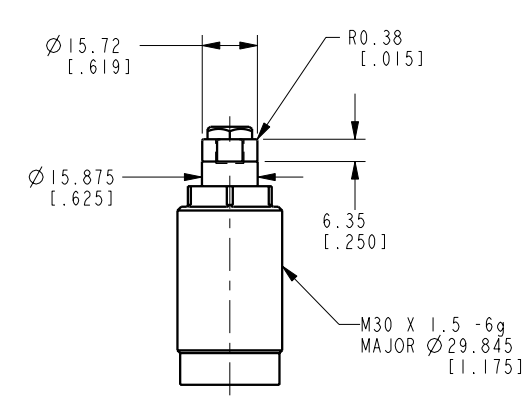
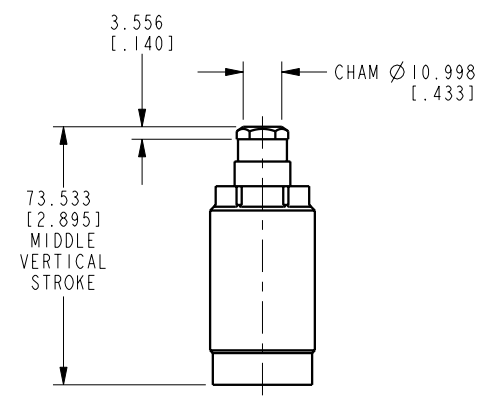



ILCM41017112 REV A ECN 2603



CAD CONTROL DRAWING



VEKTEK, INC.
1334 E. SIXTH AVE. P.O. BOX 625
EMPORIA, KS. 66801 U.S.A.

A	2603	RELEASE	DLG	1/7/14	41017112	A	WS, FA, CM, 7,3 Kn
REV	IN ACCORDANCE WITH ECN	EFFECTIVE DATE	REVISED BY	DATE	REFERENCE MODEL	REF REV	
DRW BY:	JDW	DRAWING STATUS: Released				TOLERANCES DO NOT APPLY	SIZE
DATE:	09/04/12	PRODUCTION APPROVED FOR RELEASED STATUS ONLY				DIMENSIONS ARE NOMINAL	D ILCM41017112
							REV A