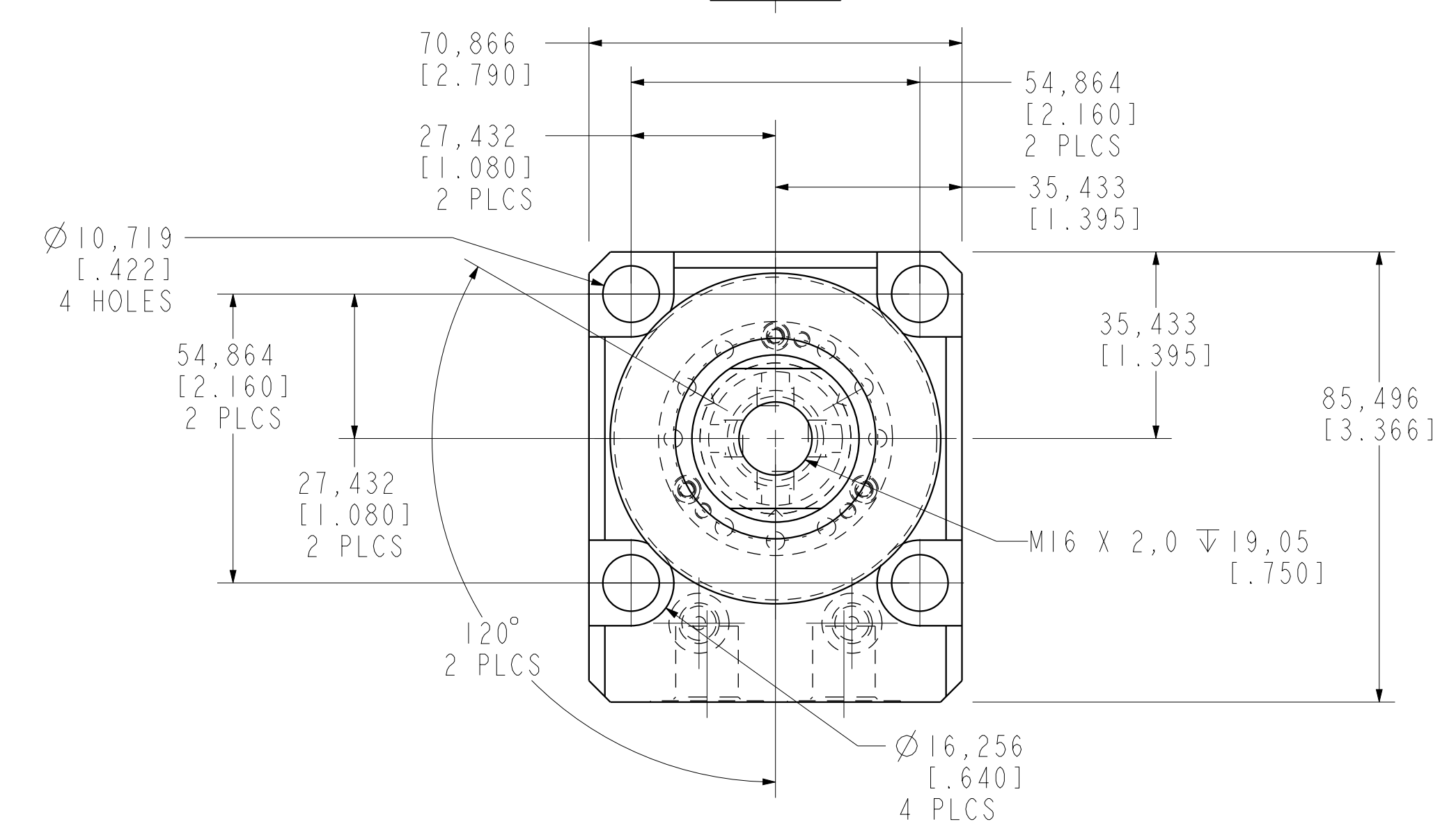


I LCM4142225PS REV C ECN 4191



CAD CONTROL DRAWING				 VEKTEK, INC. 1334 E. SIXTH AVE. P.O. BOX 625 EMPORIA, KS. 66801 U.S.A.	
C	4191	RELEASE	JDW	05/22/20	4142225PS
REV	IN ACCORDANCE WITH ECN	EFFECTIVE DATE	REVISED BY	DATE	REF REV
DRW BY:	JDW	DRAWING STATUS: Released			TOLERANCES DO NOT APPLY
DATE:	07/07/14	PRODUCTION APPROVED FOR RELEASED STATUS ONLY			UNITS
					SIZE
					D
					I LCM4142225PS
					REV C
					FORM FEG036, Rev. C