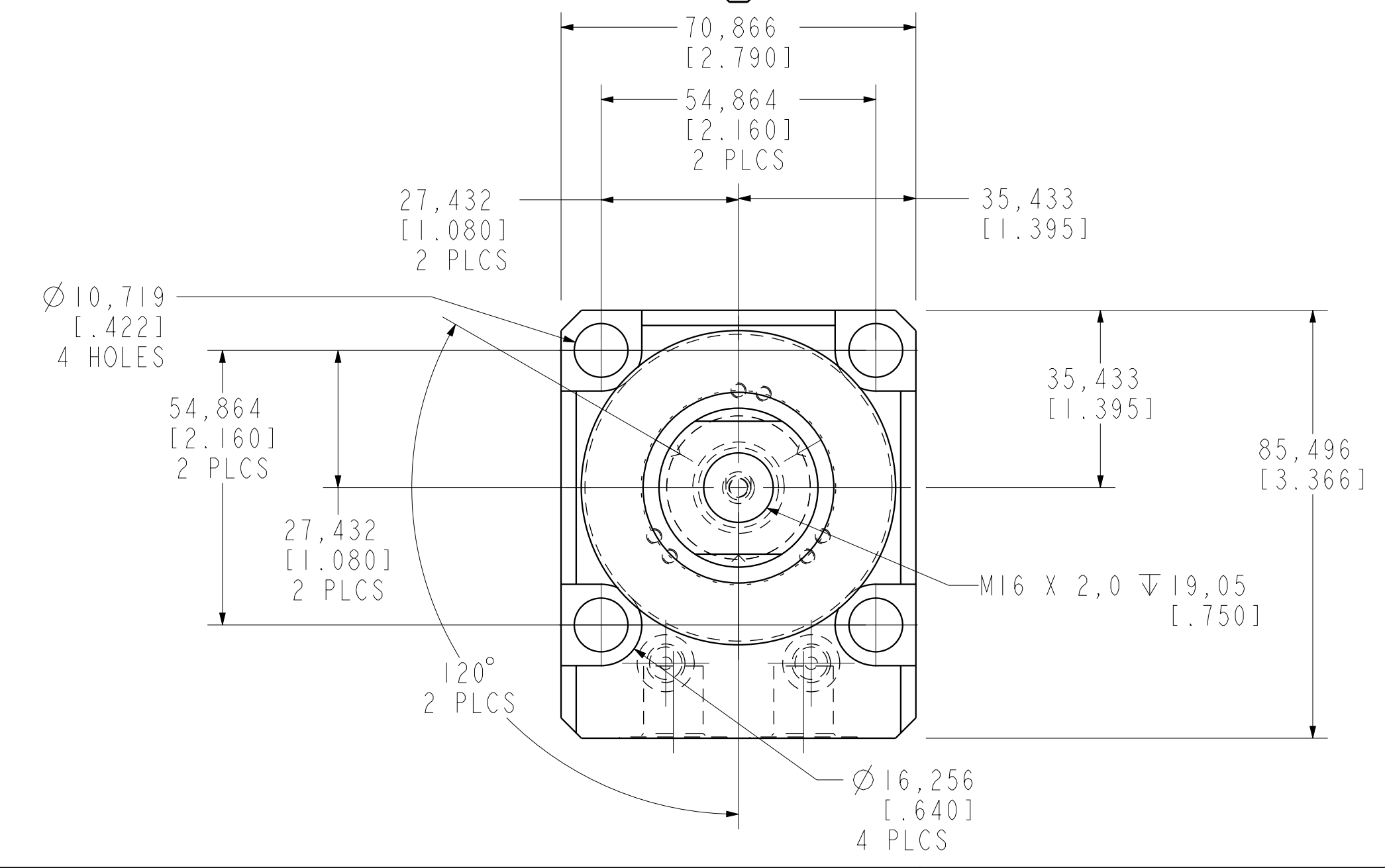


I LCM41422227PR REV A ECN 3746



CAD CONTROL DRAWING							
		VEKTEK, INC. 1334 E. SIXTH AVE. P.O. BOX 625 EMPORIA, KS. 66801 U.S.A.					
A	3746	RELEASE	JDW	03/27/19	41422227PR	A	SC, LP, BF, TC, 22KN, DA, LH, PR, LS
REV	IN ACCORDANCE WITH ECN	EFFECTIVE DATE	REVISED BY	DATE	REFERENCE MODEL	REF REV	
DRW BY:	JDW	DRAWING STATUS: Released			TOLERANCES DO NOT APPLY	SIZE	I LCM41422227PR
DATE:	03/27/19	PRODUCTION APPROVED FOR RELEASED STATUS ONLY			DIMENSIONS ARE NOMINAL	REV	A
							FORM FEG036, Rev. B