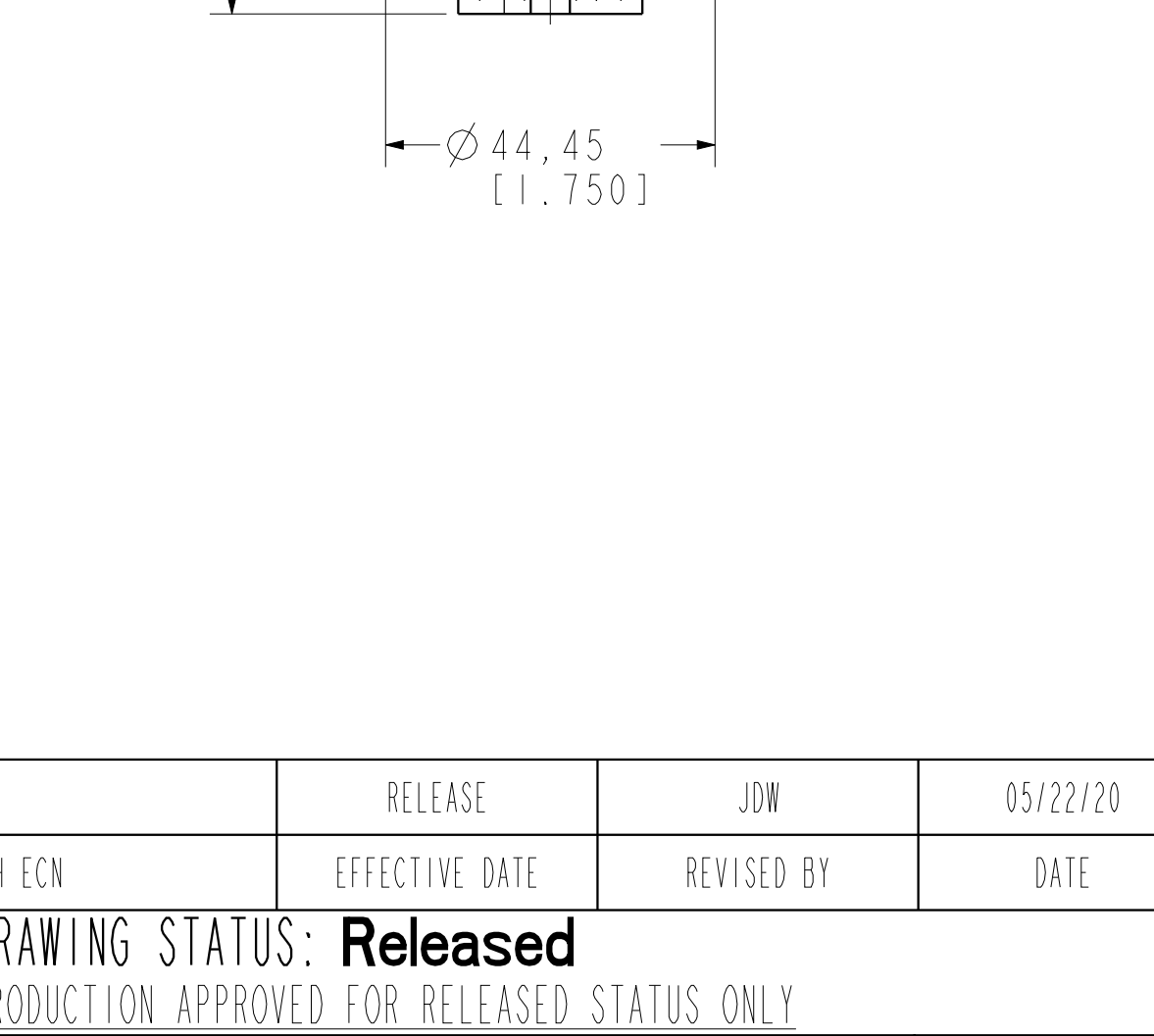
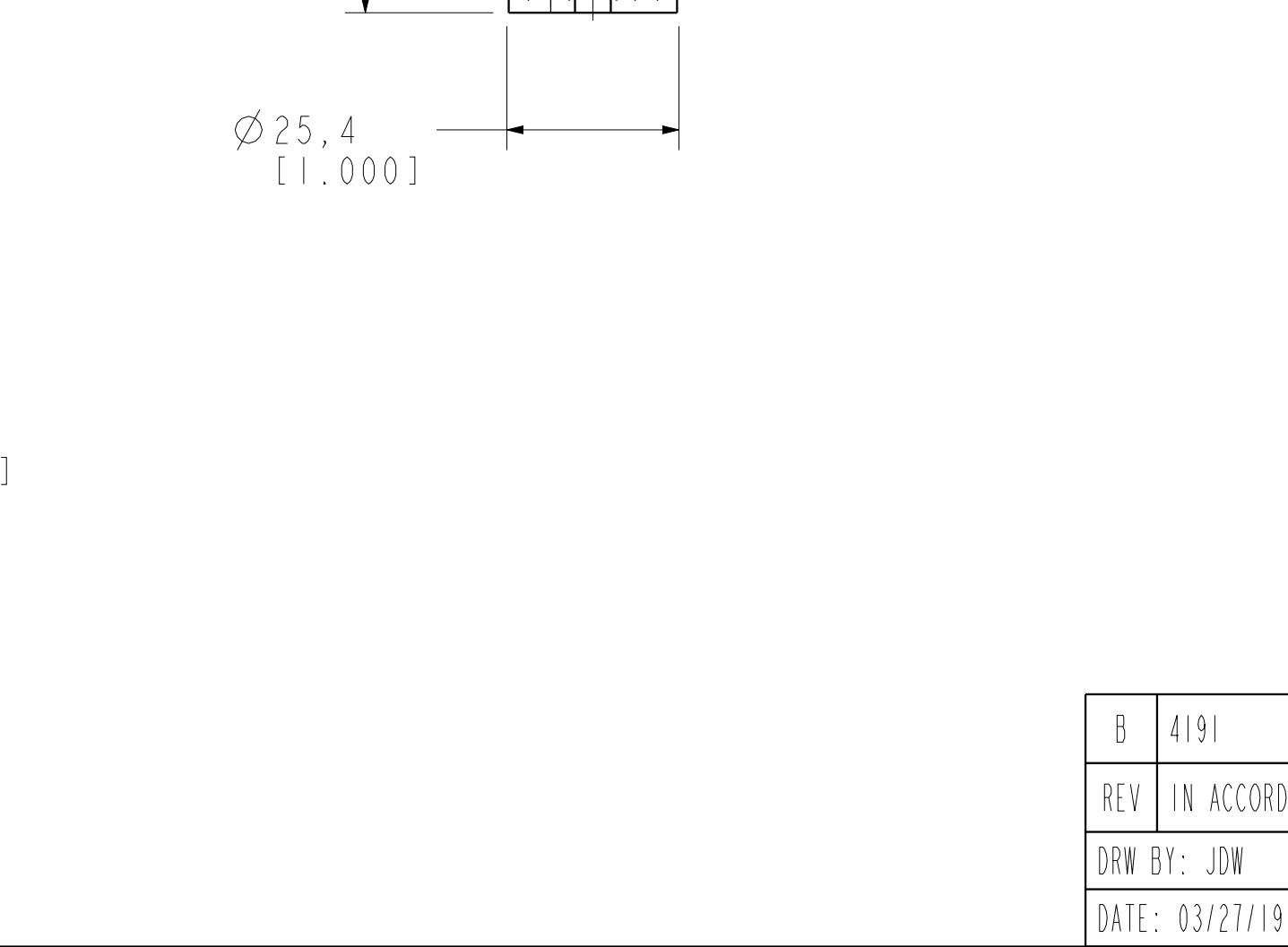
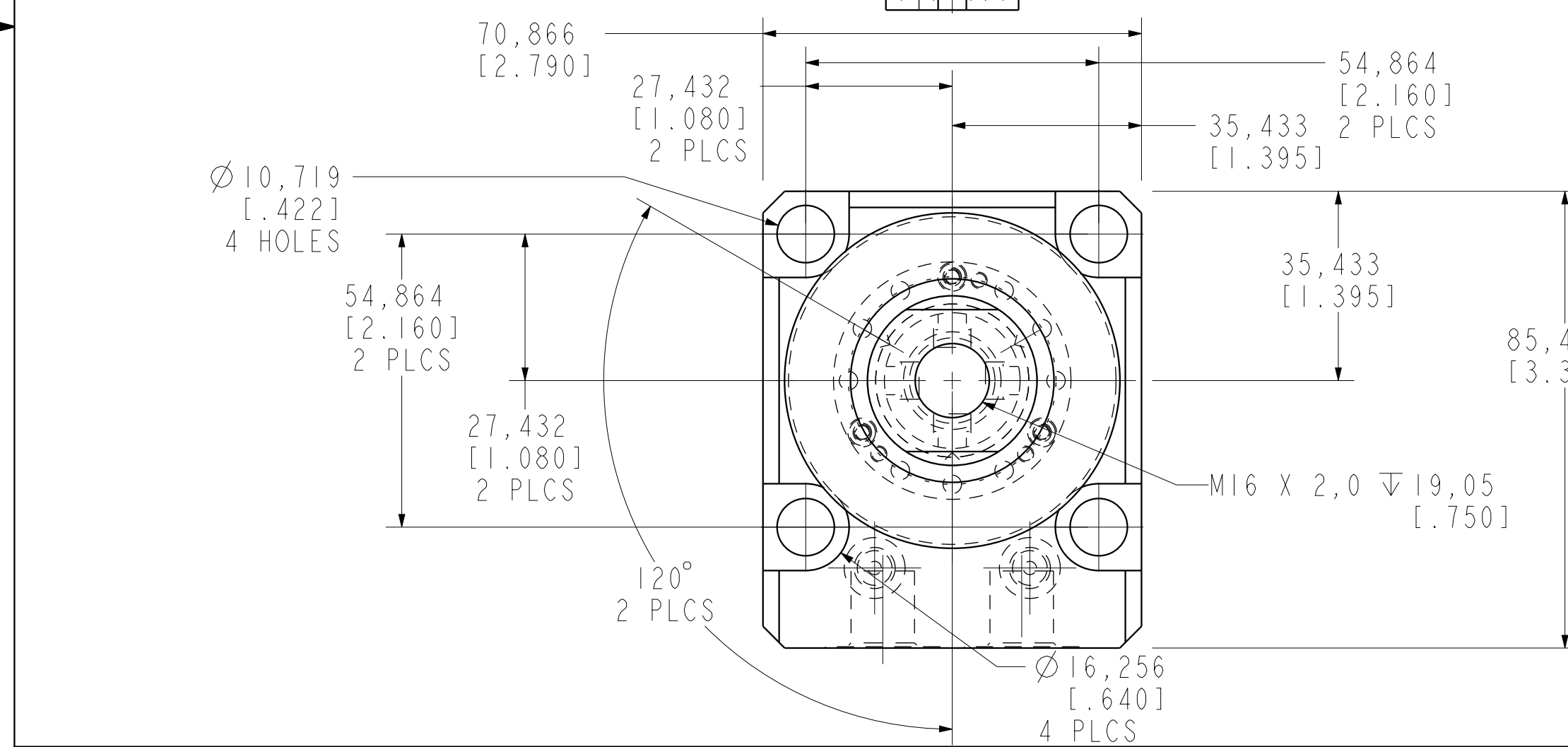


I LCM41422228PS REV B ECN 4191



CAD CONTROL DRAWING			
		VEKTEK, INC. 1334 E. SIXTH AVE. P.O. BOX 625 EMPORIA, KS. 66801 U.S.A.	
B 4191	RELEASE	JDW	05/22/20
REV IN ACCORDANCE WITH ECN	EFFECTIVE DATE	REVISED BY	DATE
DRW BY: JDW	DRAWING STATUS: Released		
DATE: 03/27/19	PRODUCTION APPROVED FOR RELEASED STATUS ONLY		
4142228PS	A	SC, LP, BF, TC, 22KN, DA, STR, PS, LS	
TOLERANCES DO NOT APPLY DIMENSIONS ARE NOMINAL		SIZE D	I LCM41422228PS REV B