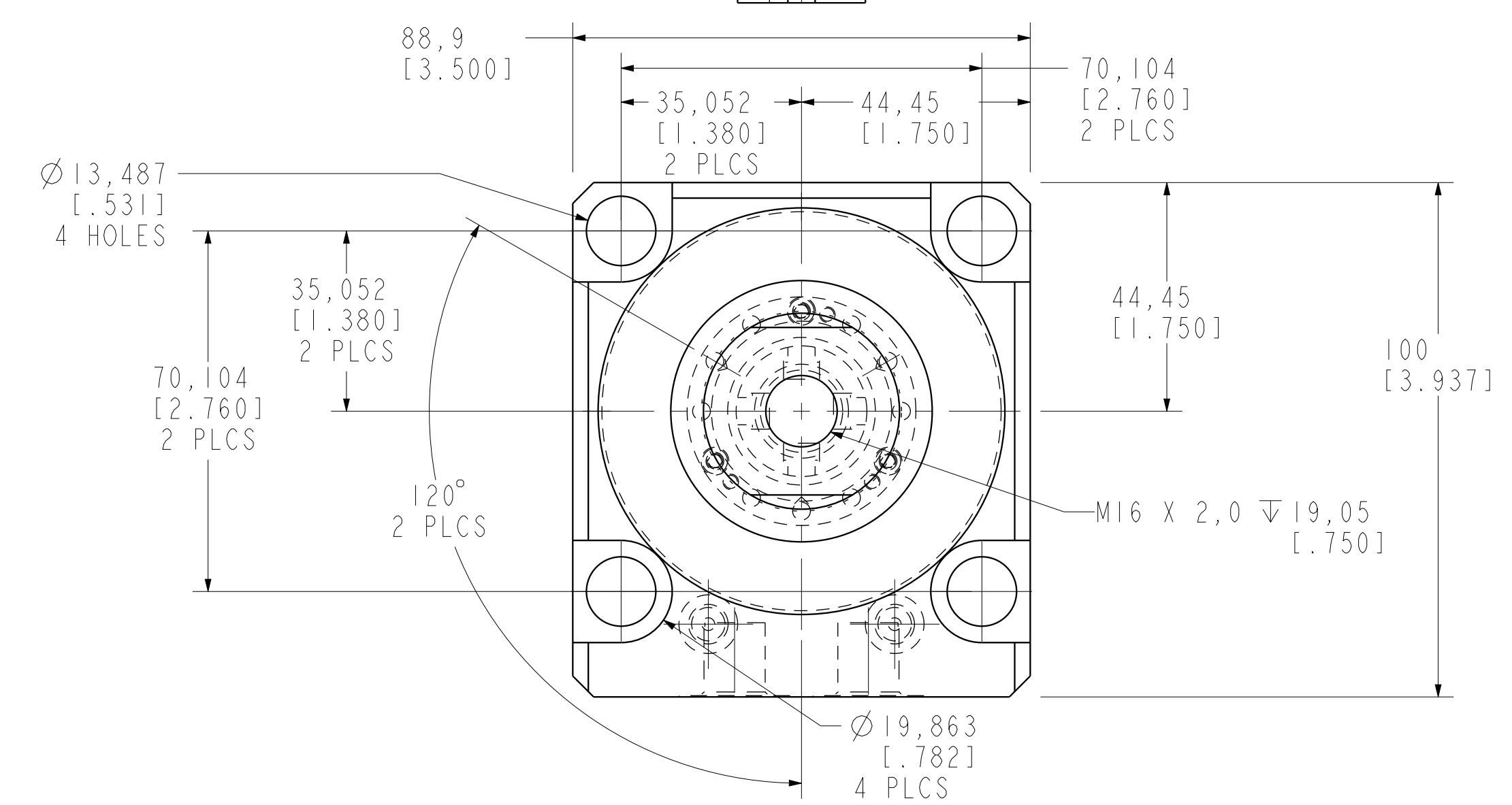


I LCM41423322PS REV C ECN 4191



CAD CONTROL DRAWING		VEKTEK [®]	
		VEKTEK, INC. 1334 E. SIXTH AVE. P.O. BOX 625 EMPORIA, KS. 66801 U.S.A.	

C	4191	RELEASE	JDW	05/22/20	41423322PS	A	SC, LP, BF, TC, 33KN, DA, LH, PS
REV	IN ACCORDANCE WITH ECN	EFFECTIVE DATE	REVISED BY	DATE	REFERENCE MODEL	REF REV	
DRW BY:	JDW	DRAWING STATUS: Released			TOLERANCES DO NOT APPLY	UNITS	SIZE
DATE:	07/07/14	PRODUCTION APPROVED FOR RELEASED STATUS ONLY			DIMENSIONS ARE NOMINAL	mm (inch)	D
					I LCM41423322PS	REV	C
					FORM FEG036, Rev. C		