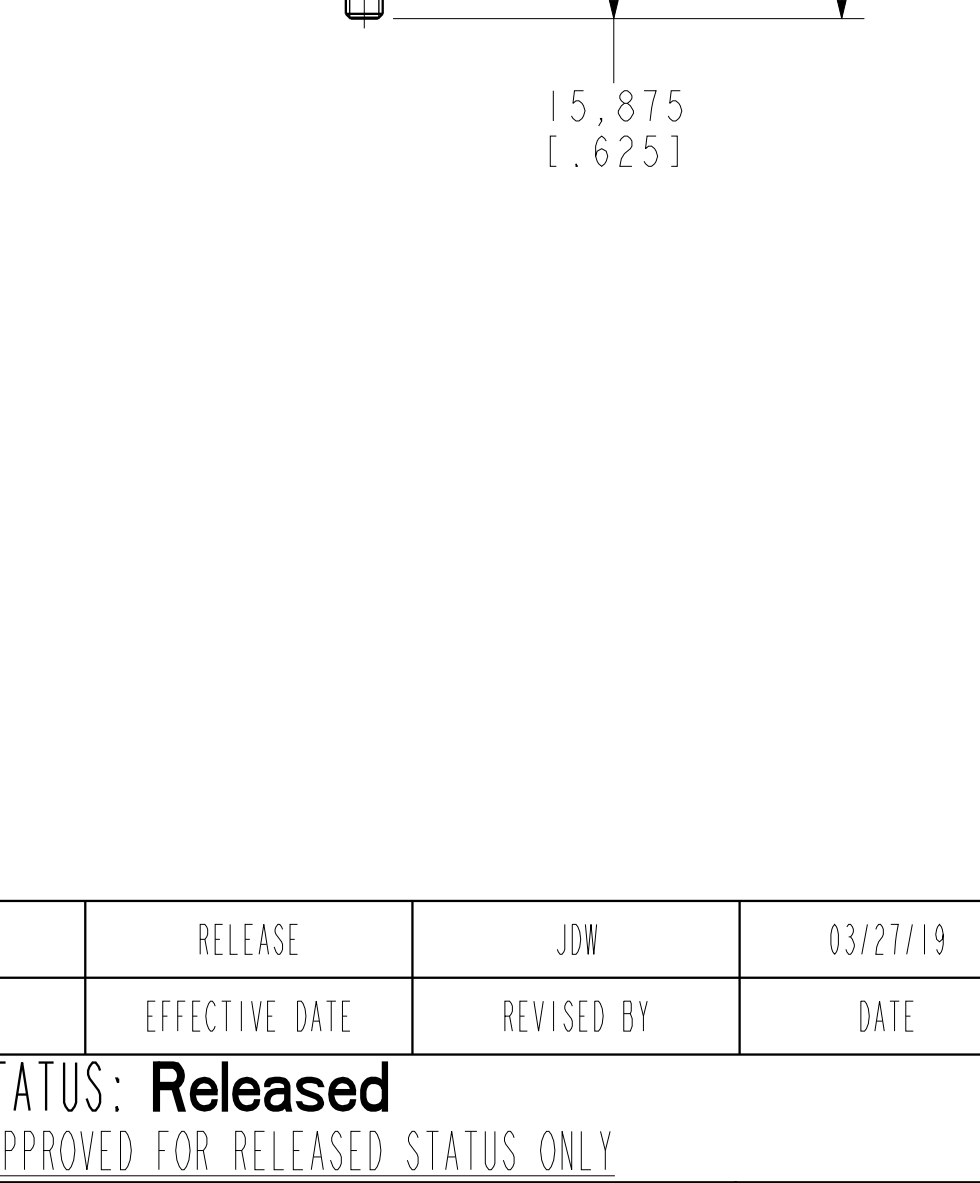
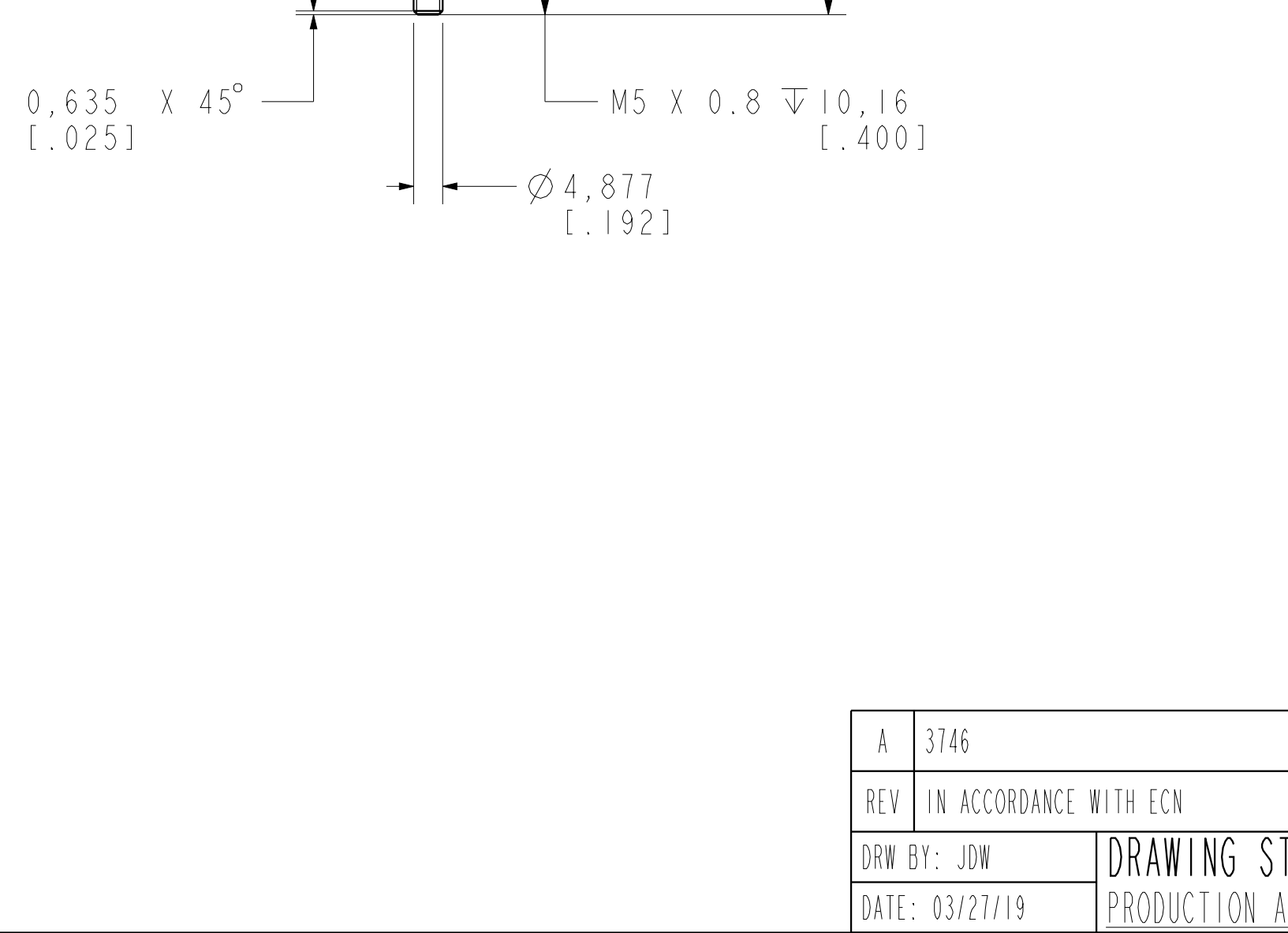
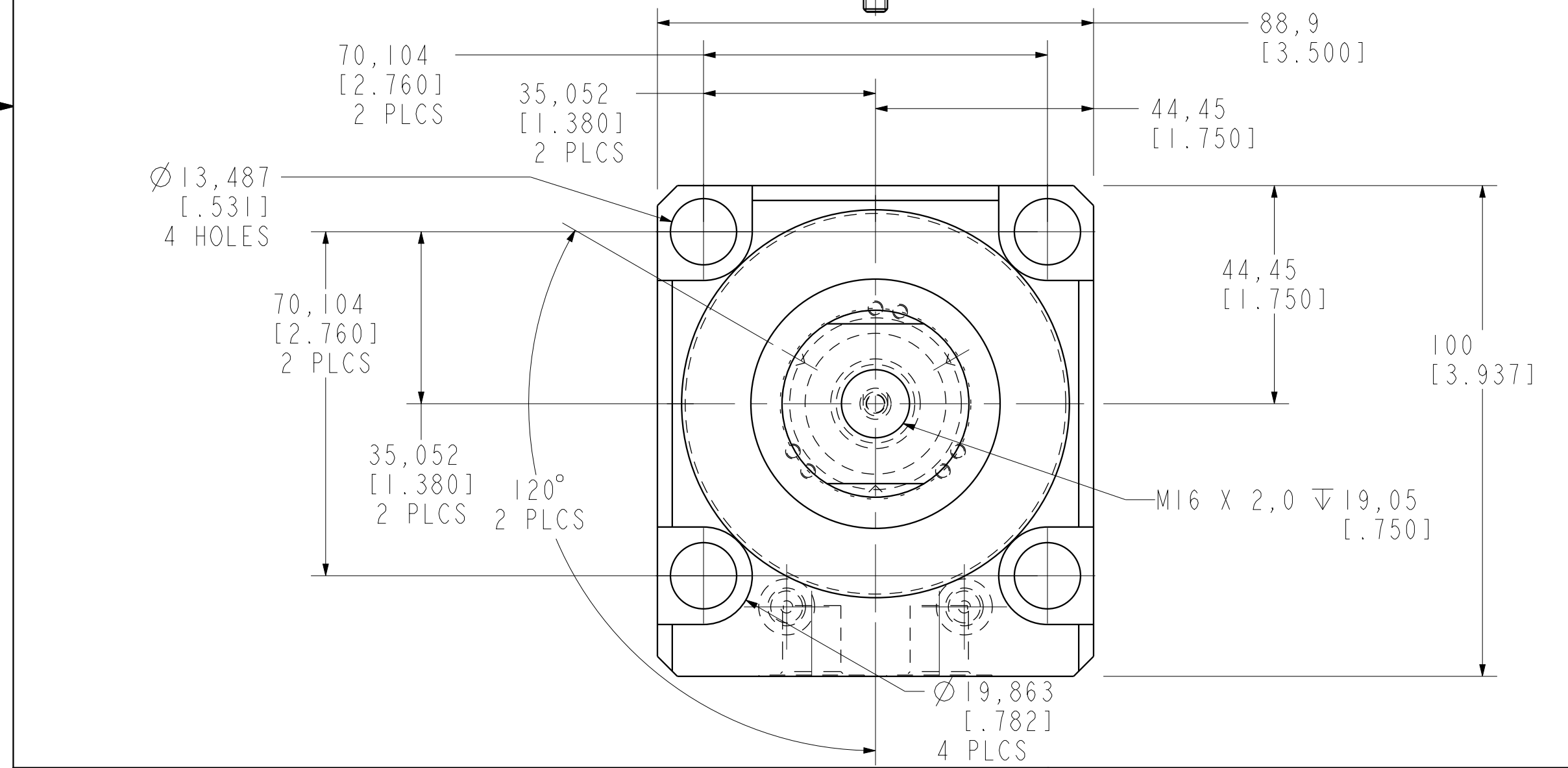


ILCM41423326PR REV A ECN 3746



CAD CONTROL DRAWING			
		VEKTEK, INC. 1334 E. SIXTH AVE. P.O. BOX 625 EMPORIA, KS. 66801 U.S.A.	
A	3746	RELEASE	JDW
REV	IN ACCORDANCE WITH ECN	EFFECTIVE DATE	REVISED BY
DATE:	03/27/19		DATE
DRAWN BY: JDW		DRAWING STATUS: Released	
DATE: 03/27/19		PRODUCTION APPROVED FOR RELEASED STATUS ONLY	
41423326PR		A	SC, LP, BF, TC, 33KN, DA, RH, PR, LS
TOLERANCES DO NOT APPLY DIMENSIONS ARE NOMINAL		SIZE D	ILCM41423326PR REV A
		FORM FEG036, Rev. B	