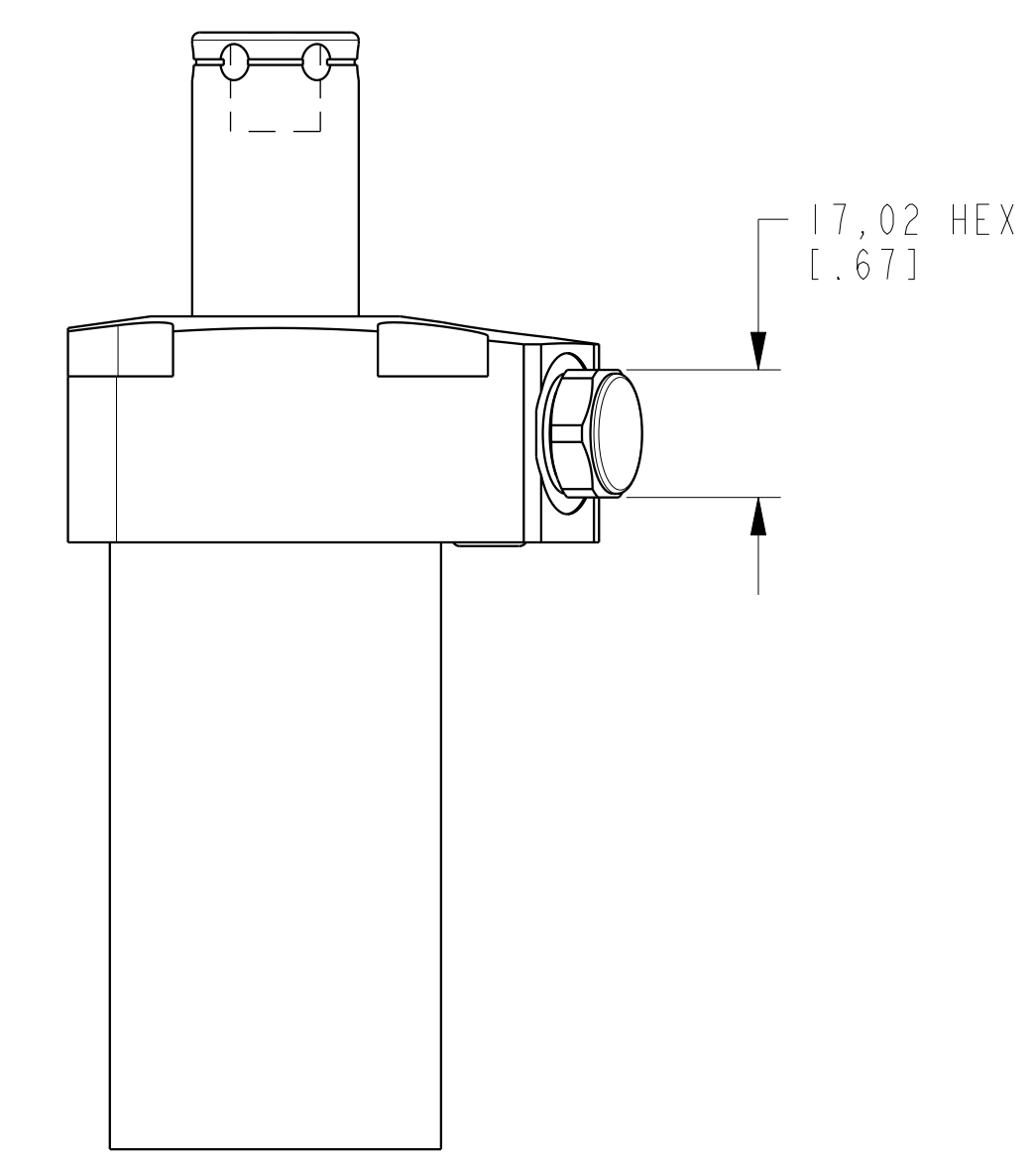


ILCM41461112 REV C ECN 3600



CAD CONTROL DRAWING



C	3600	RELEASE	NPETERS	10/3/18	41461112	B	SC, TF, TC, 11.6 KN, SA, LH
REV	IN ACCORDANCE WITH ECN	EFFECTIVE DATE	REVISED BY	DATE	REFERENCE MODEL	REF REV	
DRW BY:	JDW	DRAWING STATUS: Released			TOLERANCES DO NOT APPLY	UNITS	SIZE
DATE:	12/21/11	PRODUCTION APPROVED FOR RELEASED STATUS ONLY			DIMENSIONS ARE NOMINAL	mm (inch)	D

VEKTEK, INC.	P.O. BOX 625
1334 E. SIXTH AVE.	EMPORIA, KS. 66801 U.S.A.
ILCM41461112	REV C