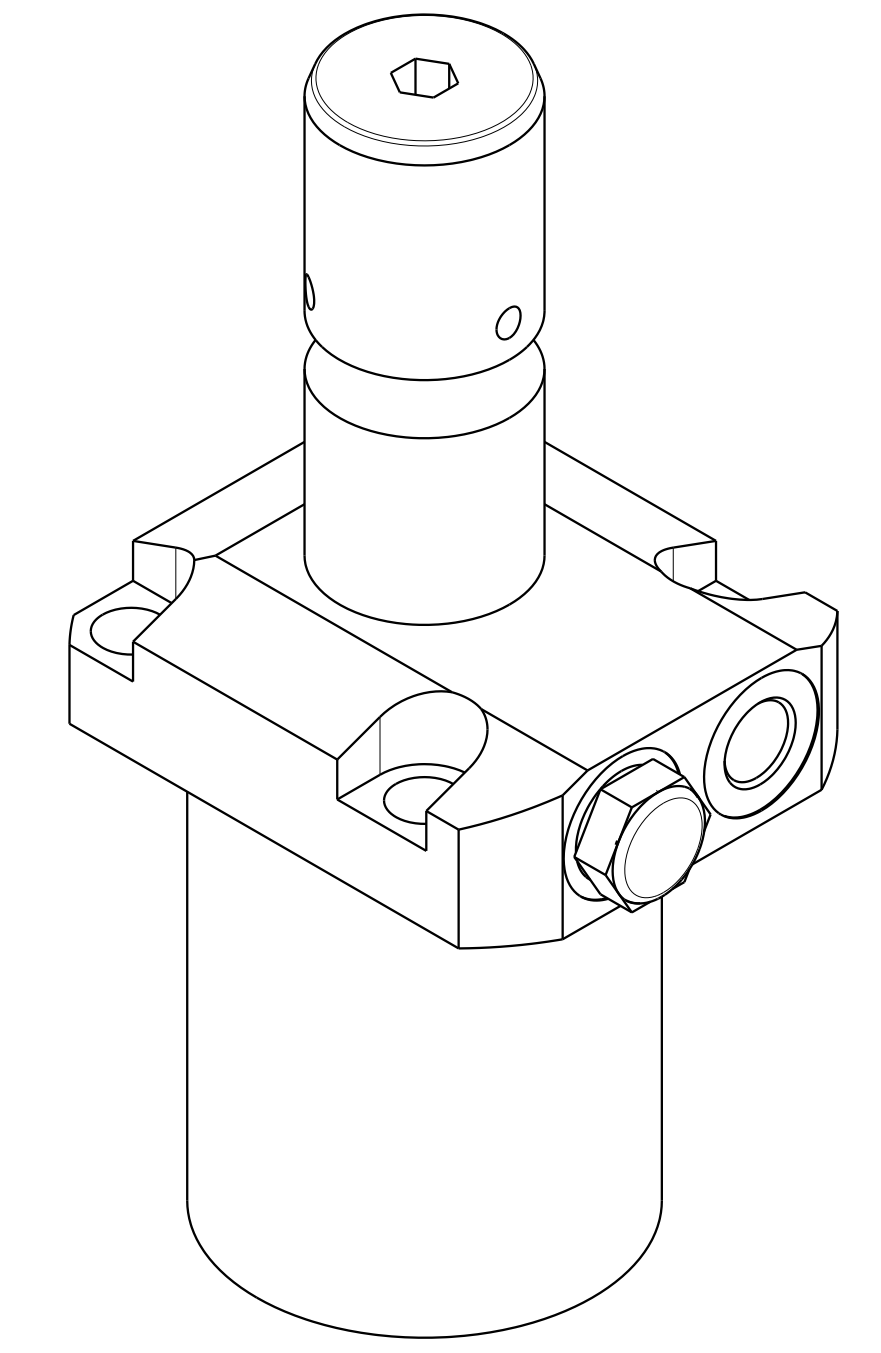
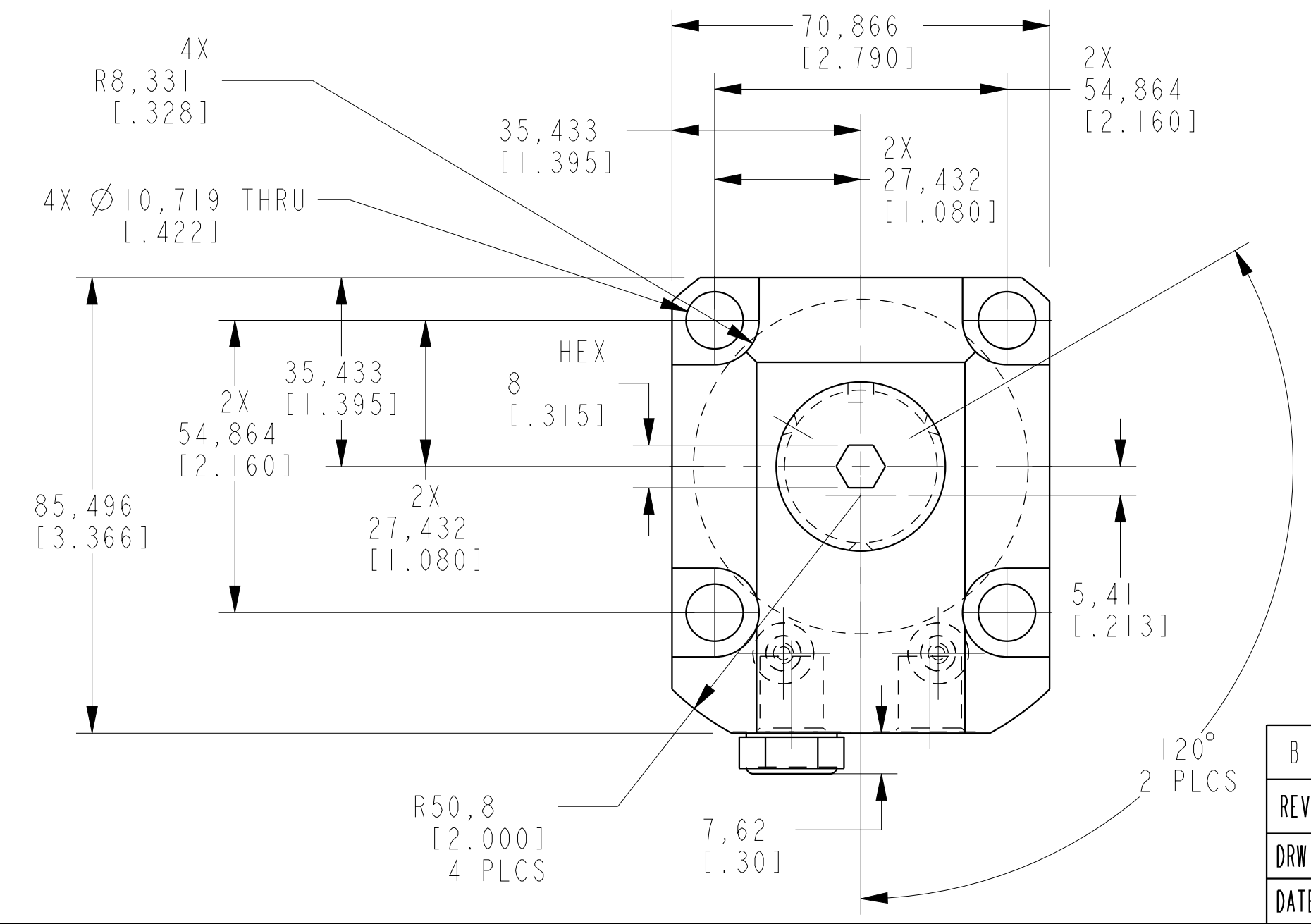
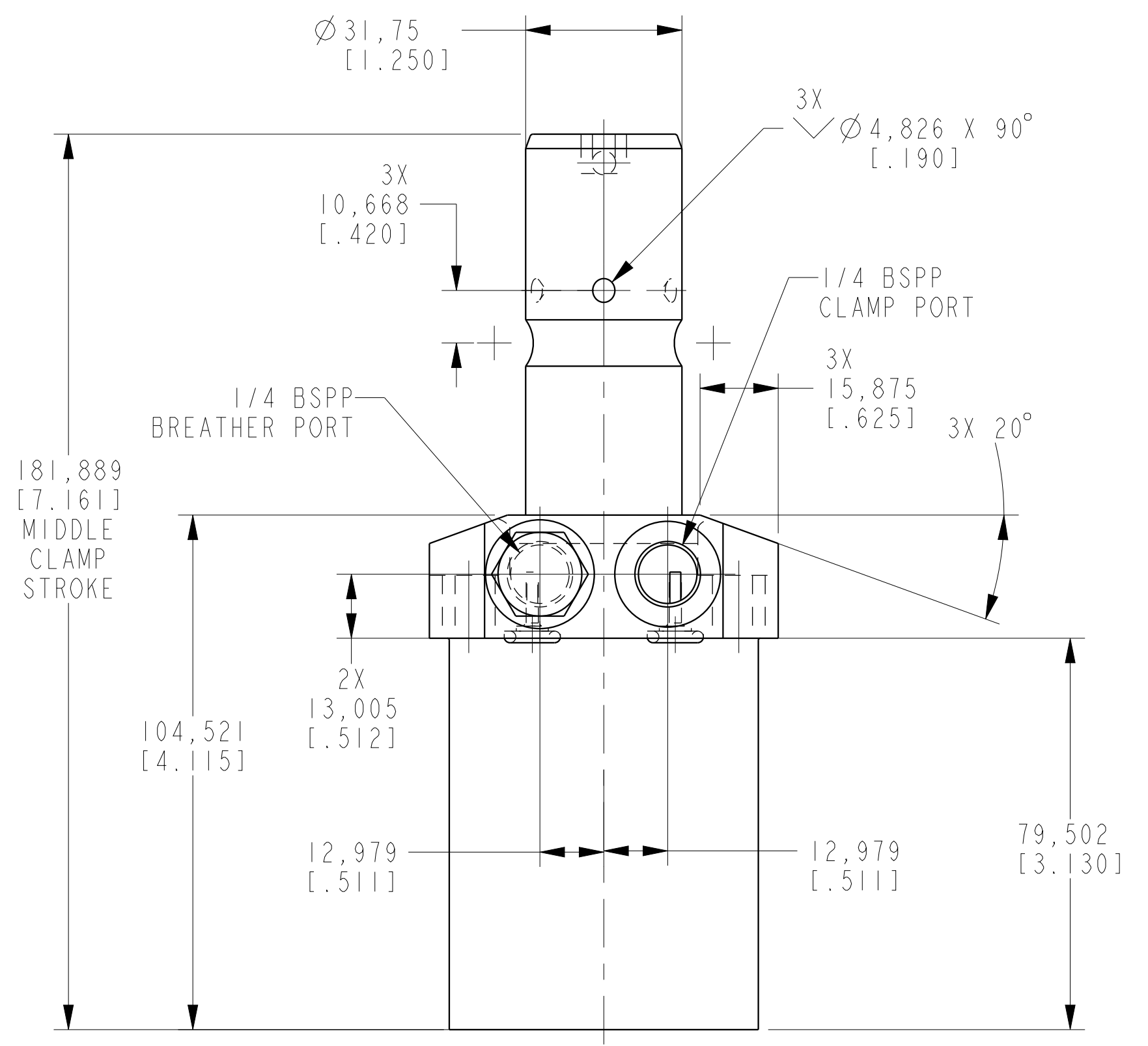
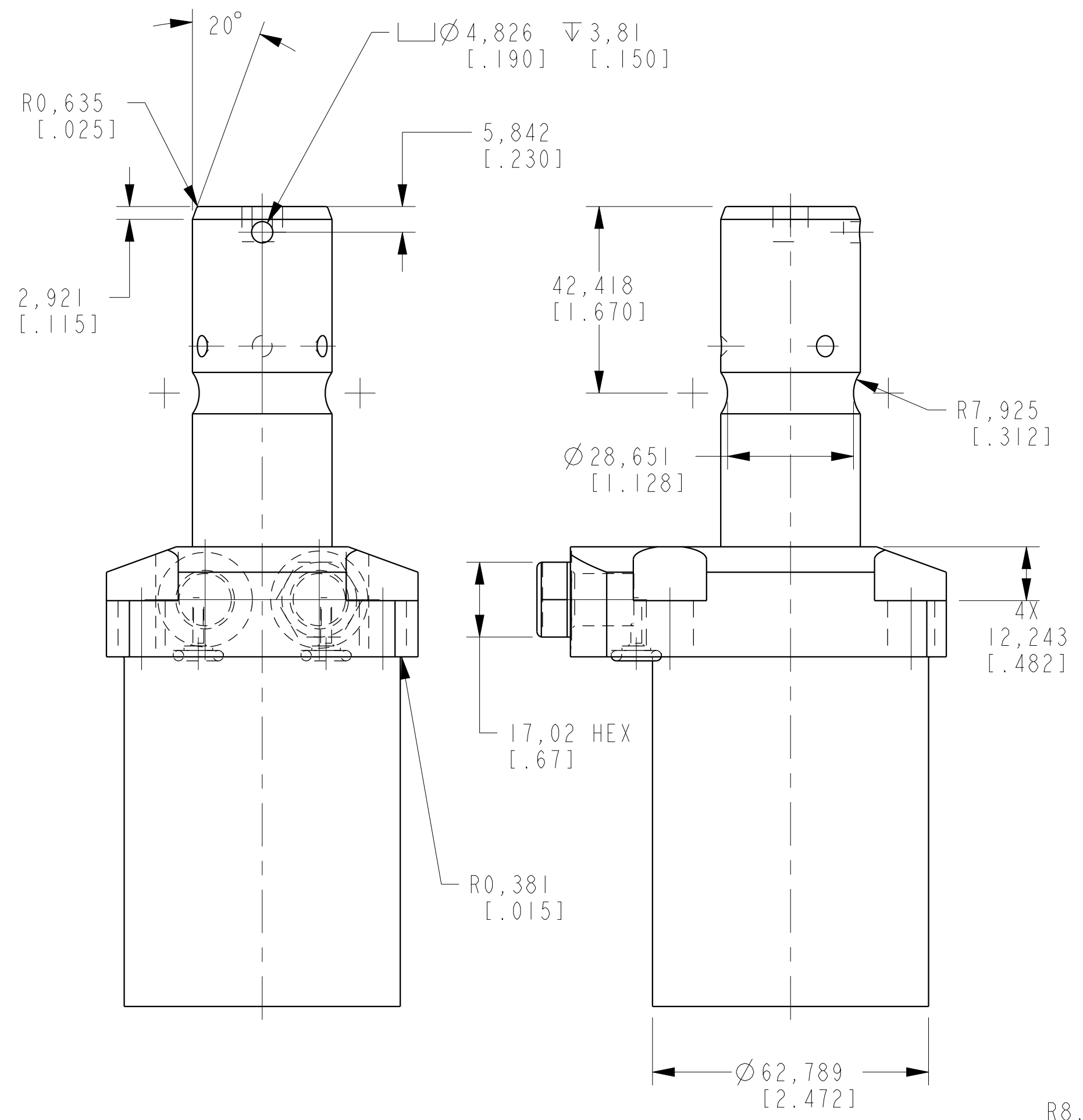
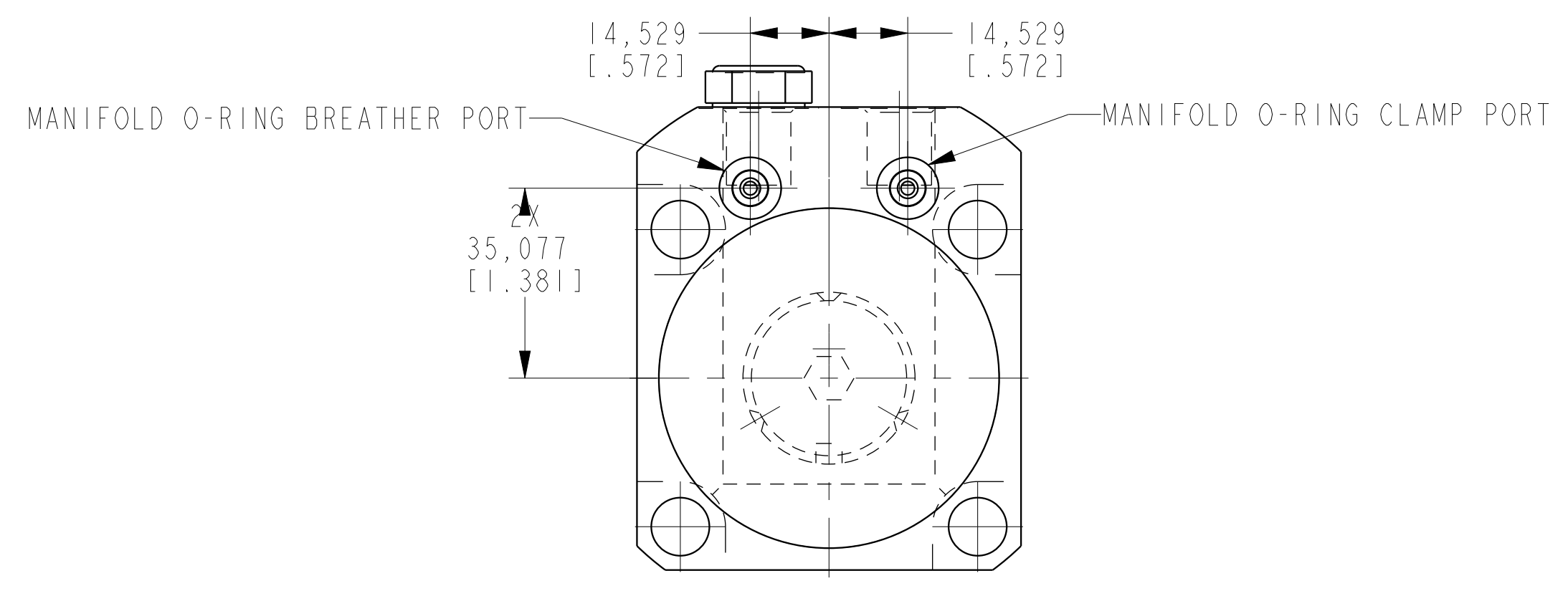


1

2

3

4



1LCM41462215 REV B ECN 3600

CAD CONTROL DRAWING			
		VEKTEK, INC. 1334 E. SIXTH AVE. P.O. BOX 625 EMPORIA, KS. 66801 U.S.A.	

B	3600	RELEASE	NPETERS	10/9/18	41462215	A	SC, LP, TF, TC, 22 KN, SA, STR
REV	IN ACCORDANCE WITH ECN	EFFECTIVE DATE	REVISED BY	DATE	REFERENCE MODEL	REF REV	
DRW BY: JDW	DRAWING STATUS: Released				TOLERANCES DO NOT APPLY	UNITS	SIZE
DATE: 7-15-11	PRODUCTION APPROVED FOR RELEASED STATUS ONLY				DIMENSIONS ARE NOMINAL	mm (inch)	D
							1LCM41462215
							REV B

1

2

3

4

SHEET 1 OF 1