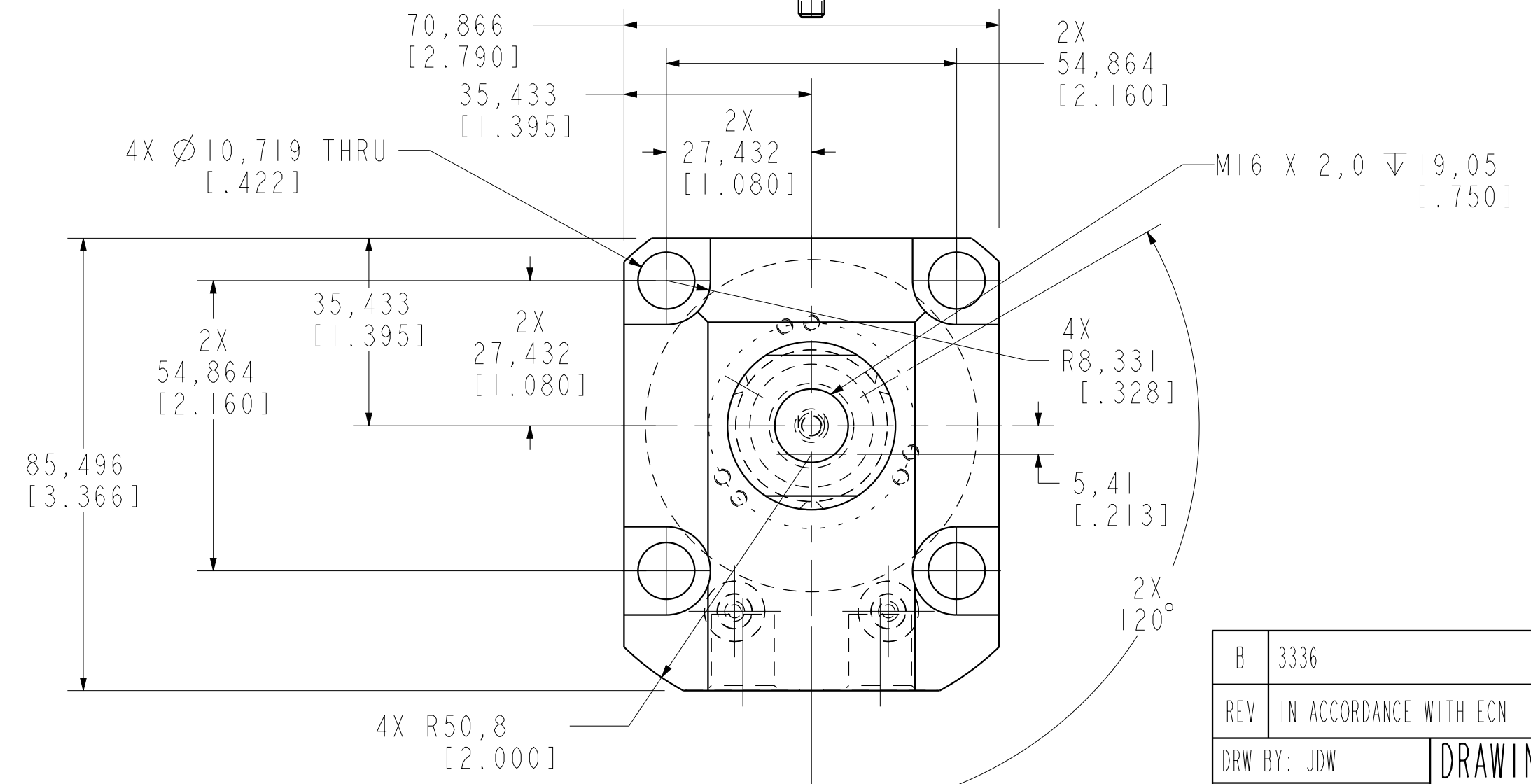
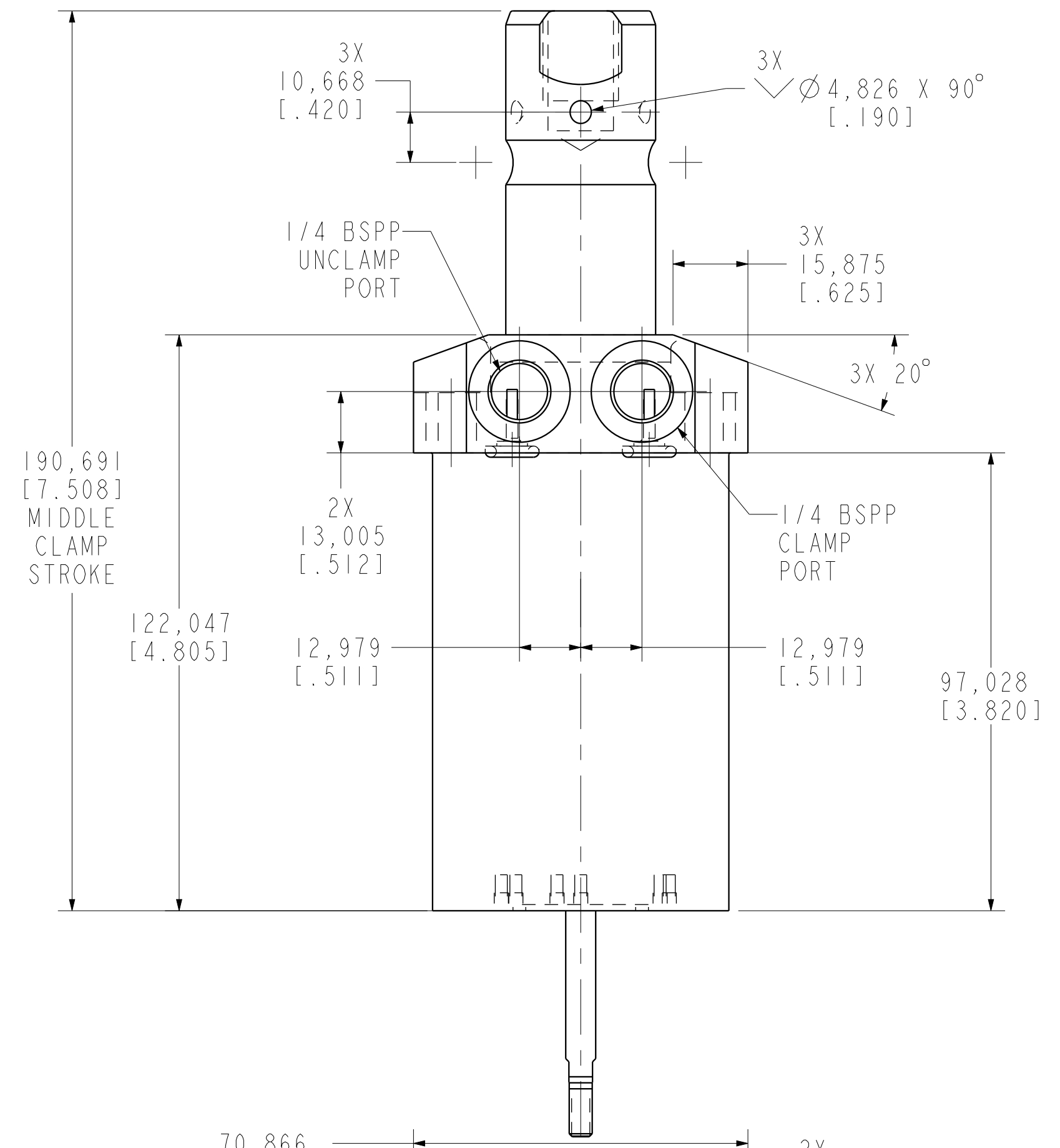
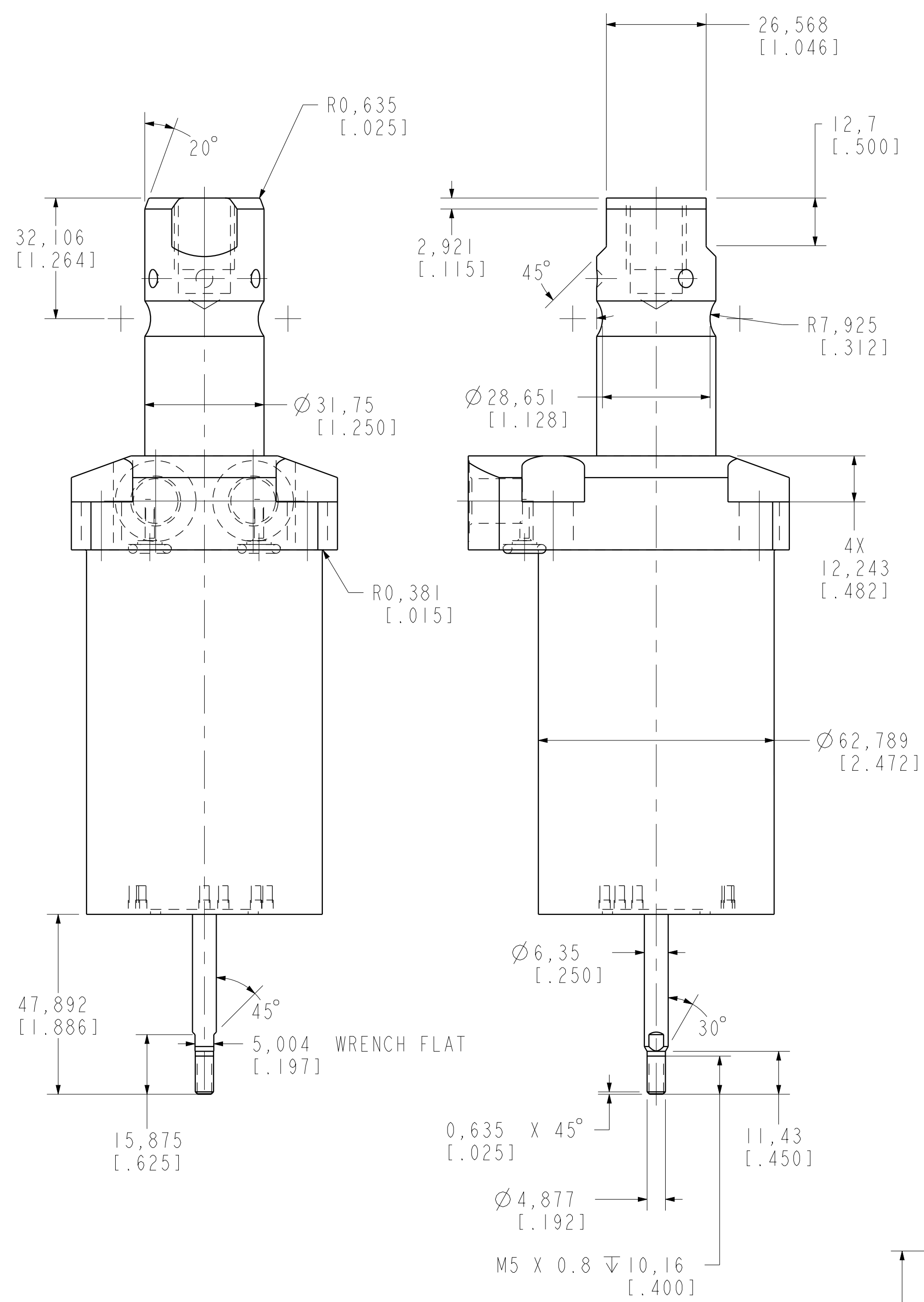


I LCM41462223PR REV B ECN 3336



CAD CONTROL DRAWING				 VEKTEK, INC. 1334 E. SIXTH AVE. P.O. BOX 625 EMPORIA, KS. 66801 U.S.A.		
B 3336	RELEASE	GAR	11/17/17	41462223PR	A	SC,LP,TF,TC,22 KN,DA,RH,LS,PR
REV IN ACCORDANCE WITH ECN	EFFECTIVE DATE	REVISED BY	DATE	REFERENCE MODEL	REF REV	
DRW BY: JDW	DRAWING STATUS: Released			TOLERANCES DO NOT APPLY	UNITS	SIZE
DATE: 07/02/14	PRODUCTION APPROVED FOR RELEASED STATUS ONLY			DIMENSIONS ARE NOMINAL	mm (inch)	D I LCM41462223PR REV B
				FORM FEG036, Rev. C		