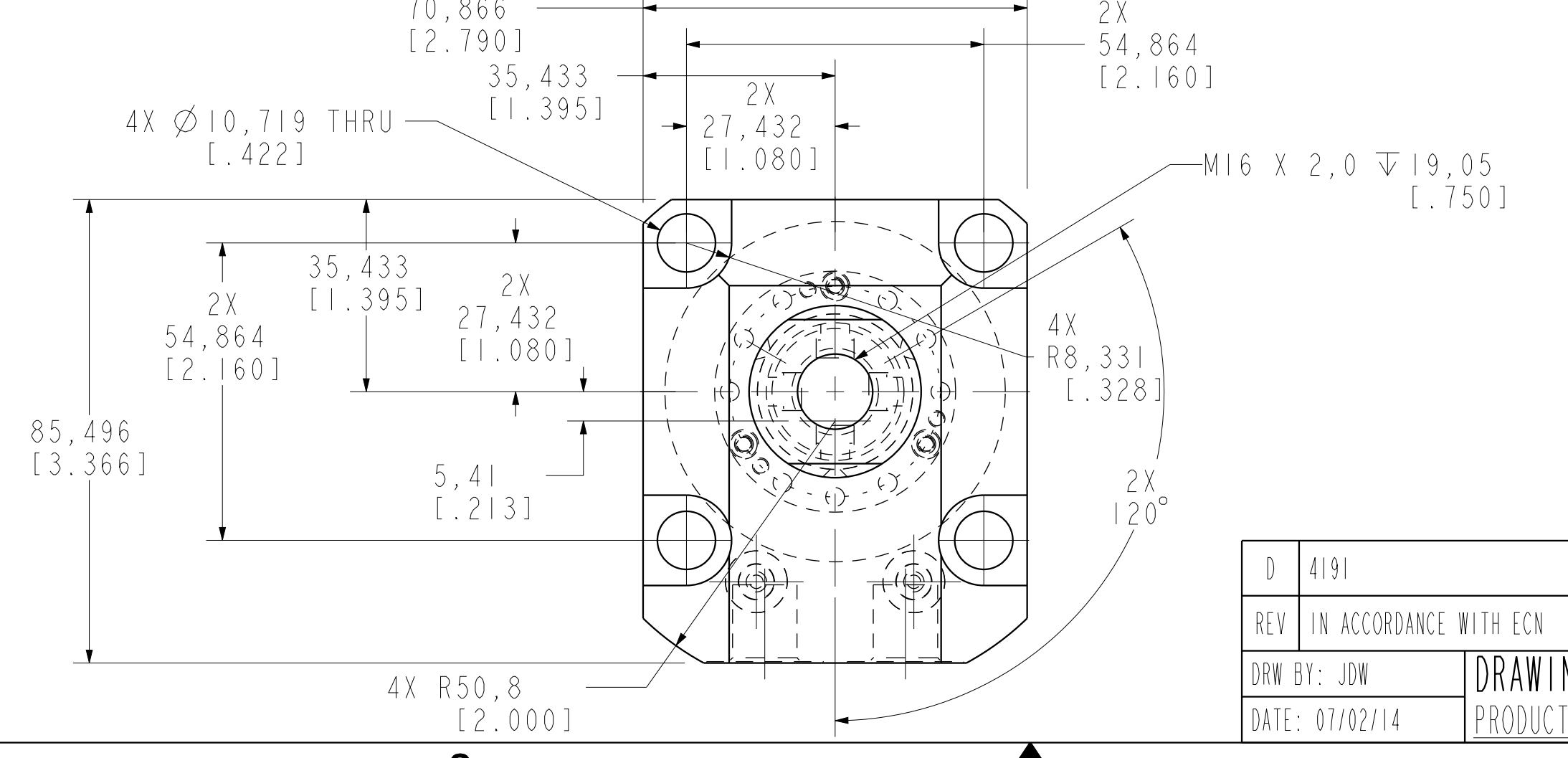
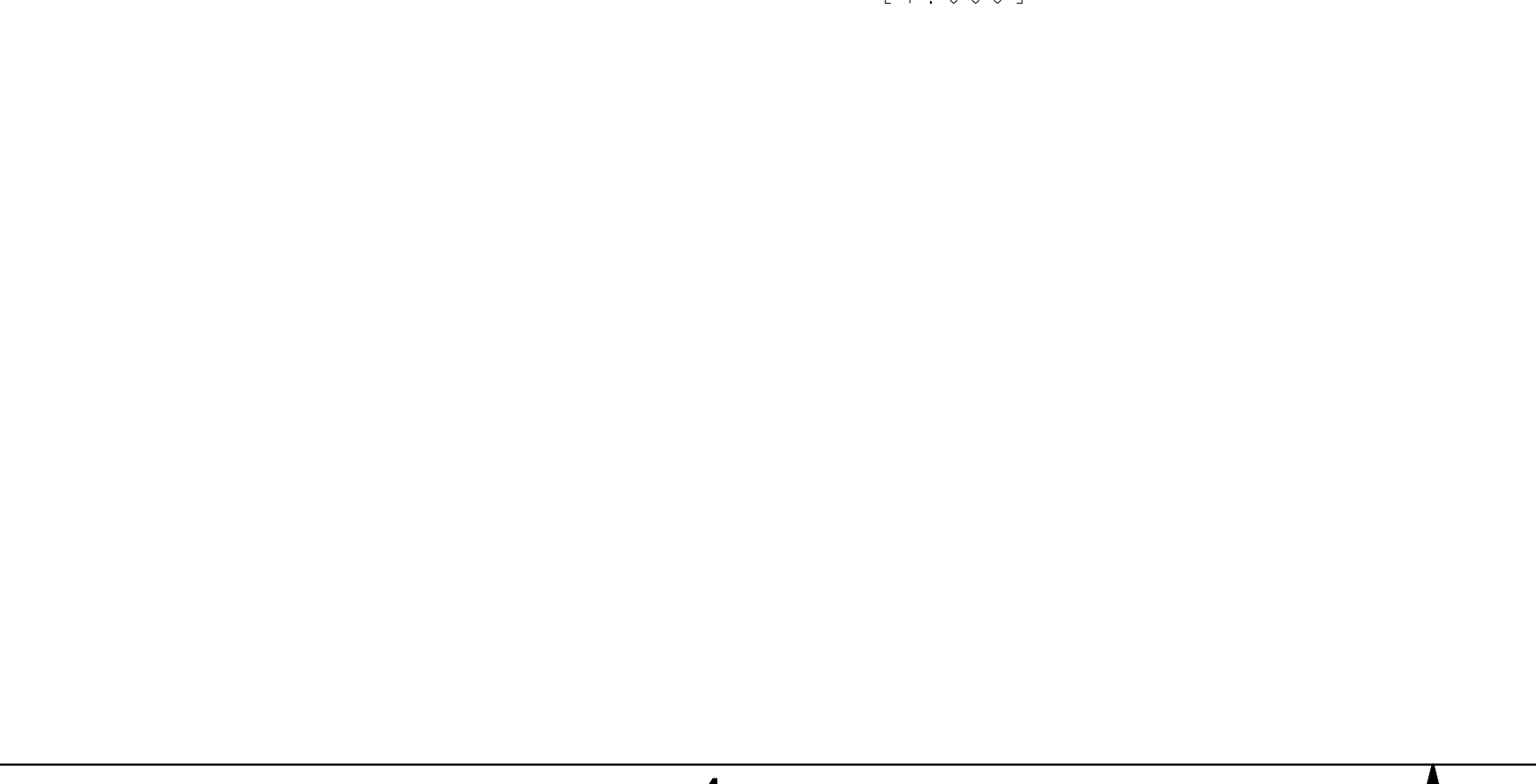


I LCM41462224PS REV D ECN 4191



CAD CONTROL DRAWING			
		VEKTEK, INC. 1334 E. SIXTH AVE. P.O. BOX 625 EMPORIA, KS. 66801 U.S.A.	
D 4191	RELEASE	JDW	05/22/20
REV IN ACCORDANCE WITH ECN	EFFECTIVE DATE	REVISED BY	DATE
DRW BY: JDW	DRAWING STATUS: Released		TOLERANCES DO NOT APPLY UNITS SIZE
DATE: 07/02/14	PRODUCTION APPROVED FOR RELEASED STATUS ONLY		mm (inch) D I LCM41462224PS REV D
		FORM FEG036, Rev. C	