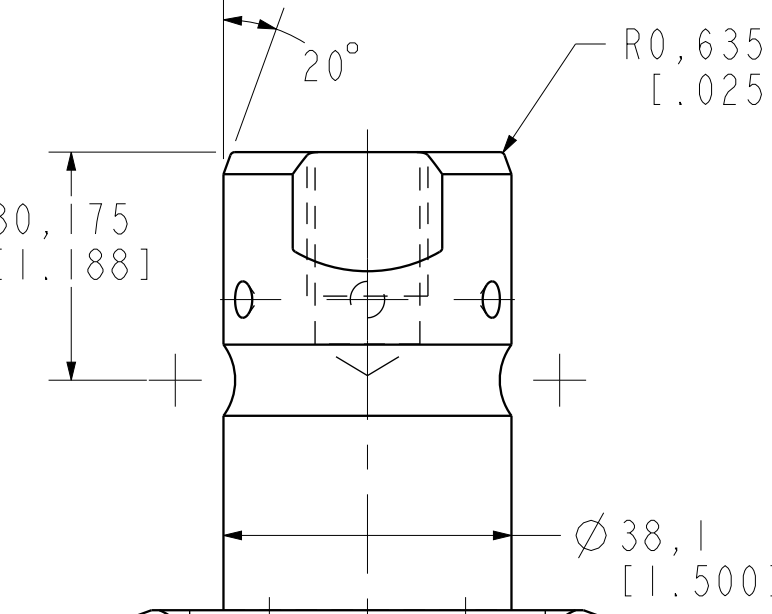


4X 5,283
[.208]

4X 6,985
[.275]

4X 6,477
[.255]

4X 3,302
[.130]

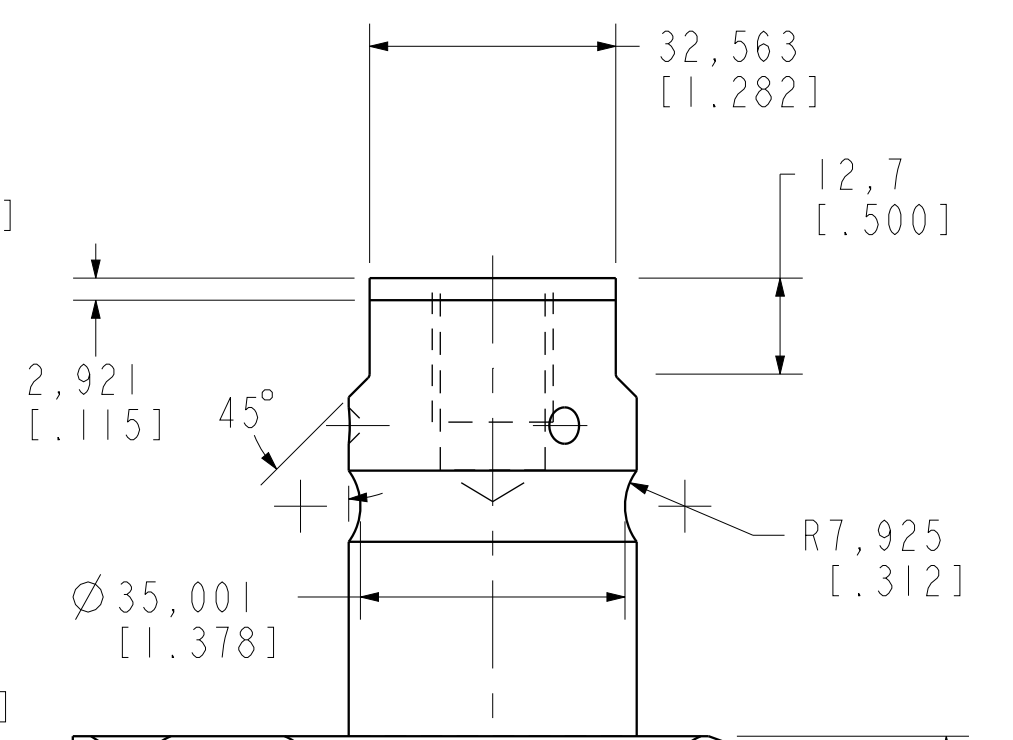


20°

R0,635
[.025]

30,175
[1.188]

Ø38,1
[1.500]



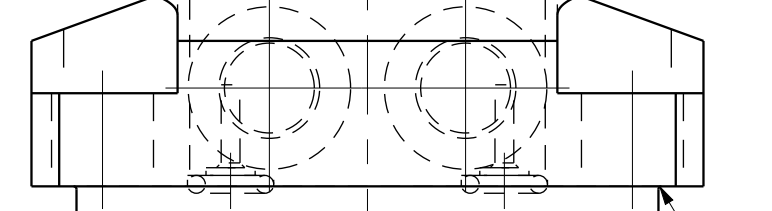
45°

R7,925
[.312]

2,921
[.115]

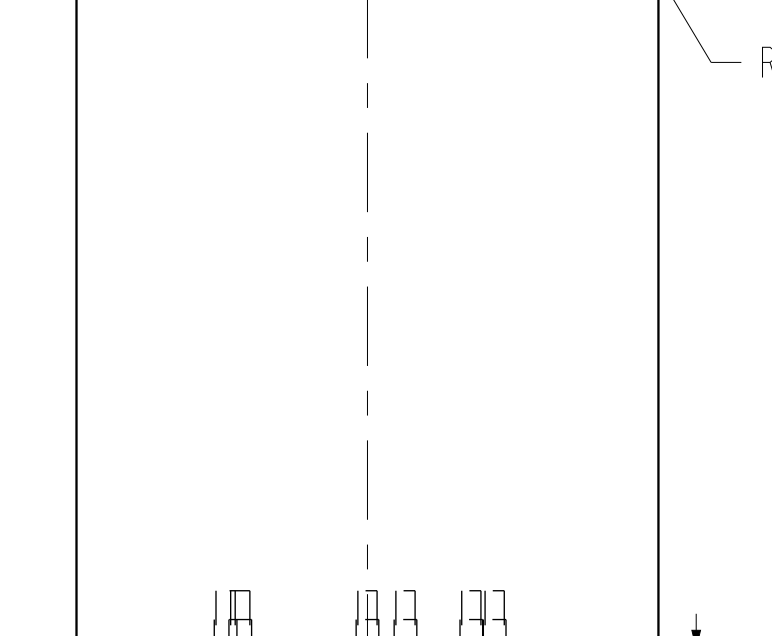
12,7
[.500]

Ø35,001
[1.378]



R0,381
[.015]

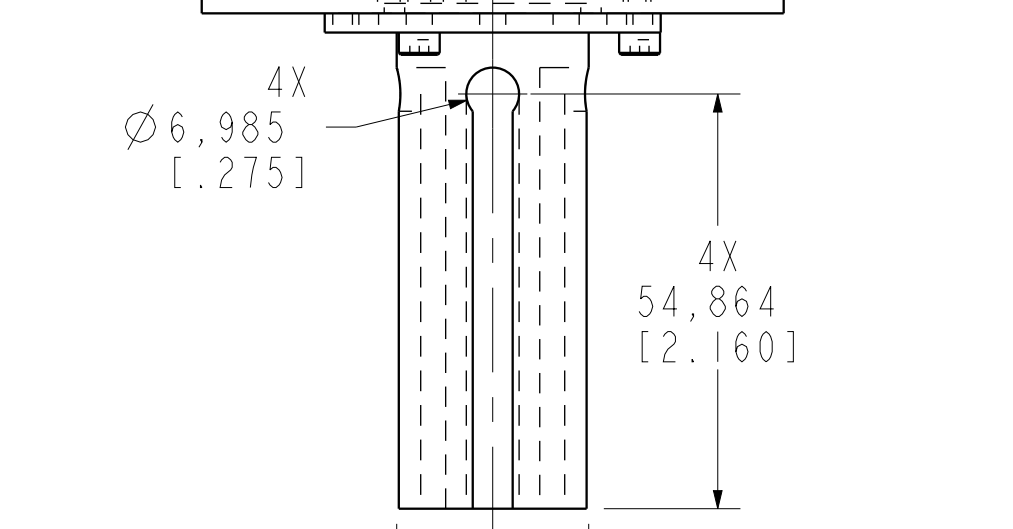
4X 12,7
[.500]



65,532
[2.580]

2,54
[.100]

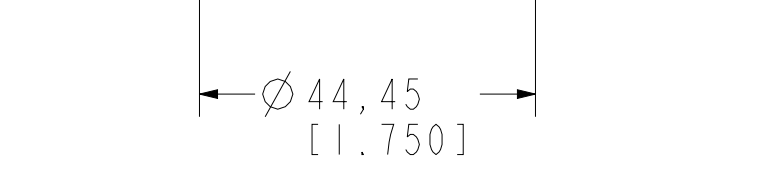
Ø44,45
[1.750]



Ø6,985
[.275]

4X 54,864
[2.160]

Ø25,4
[1.000]



Ø44,45
[1.750]



Ø44,45
[1.750]



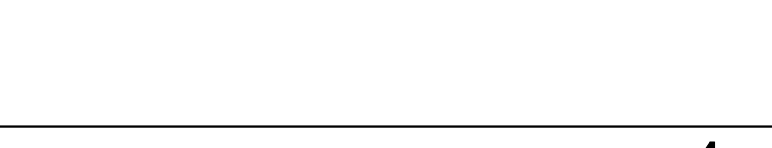
Ø44,45
[1.750]



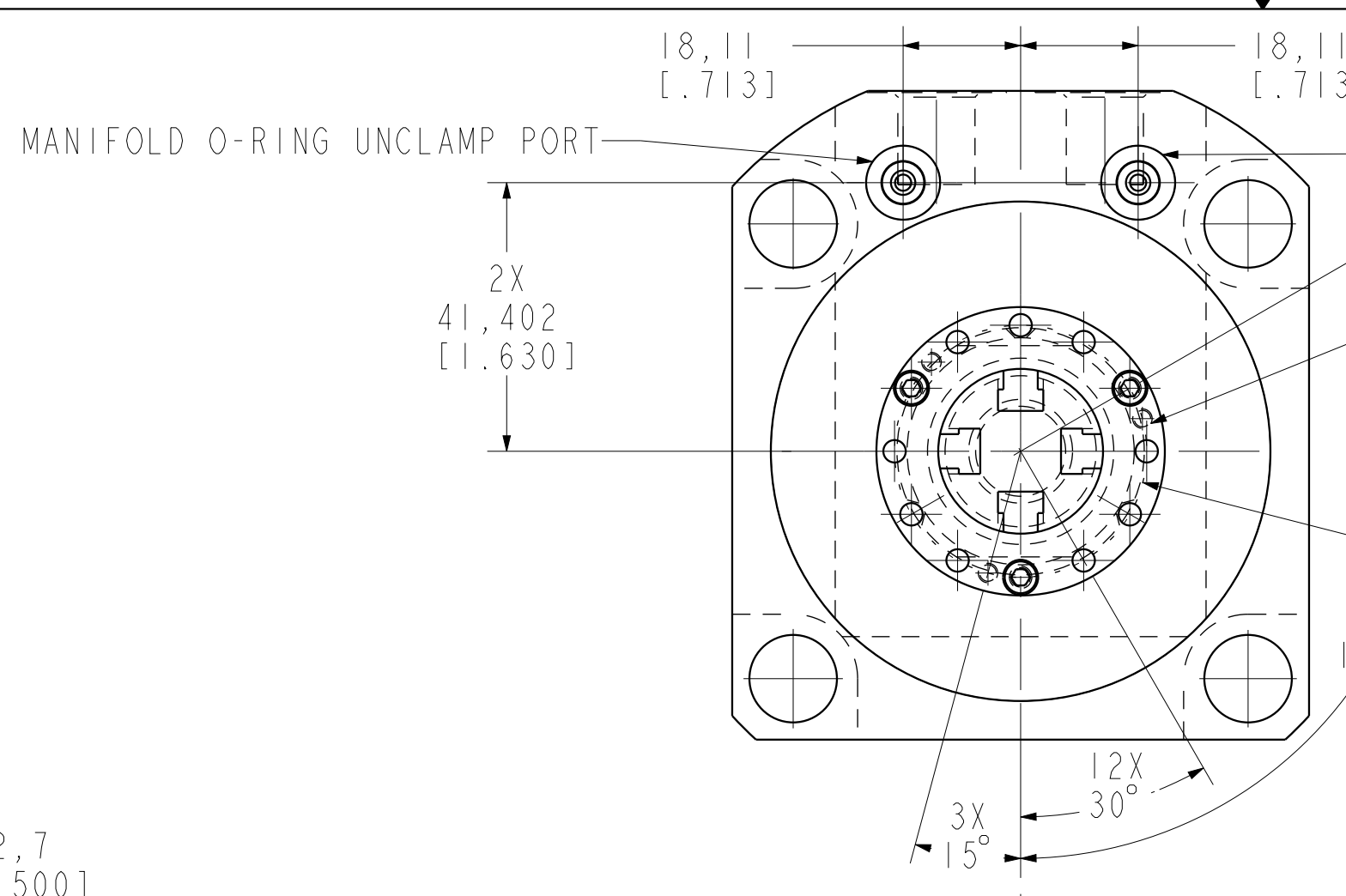
Ø44,45
[1.750]



Ø44,45
[1.750]



Ø44,45
[1.750]



MANIFOLD O-RING UNCLAMP PORT

MANIFOLD O-RING CLAMP PORT

18,11
[.713]

18,11
[.713]

2X 41,402
[1.630]

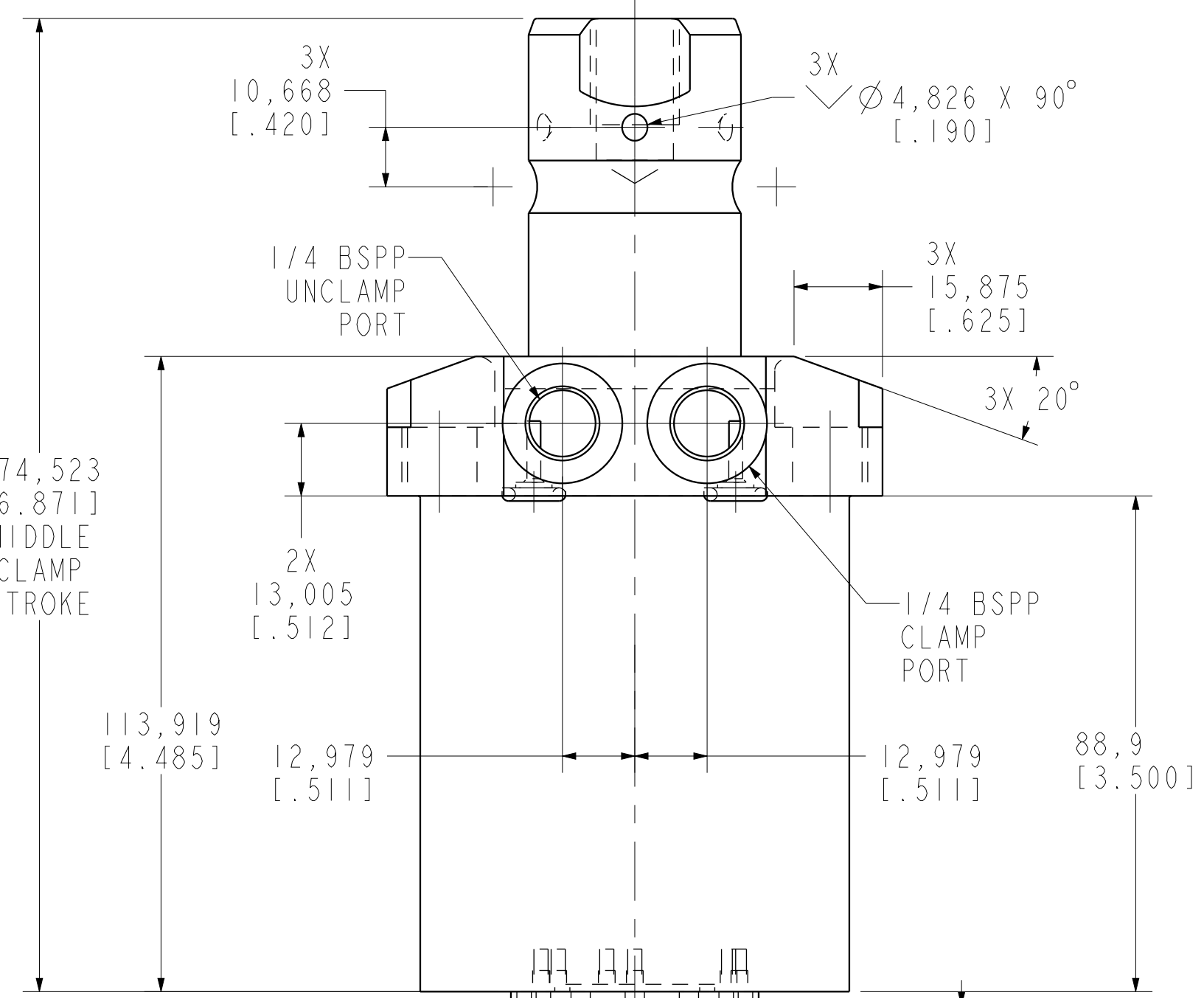
6X M3 X 0.5 ∇ 3,81
[.150]

Ø38,862 BOLT CIRCLE
[1.530]

3X 120°

12X 30°

3X 15°



3X 10,668
[.420]

3X Ø4,826 X 90°
[.190]

1/4 BSPP UNCLAMP PORT

3X 15,875
[.625]

3X 20°

1/4 BSPP CLAMP PORT

174,523
[6.871] MIDDLE CLAMP STROKE

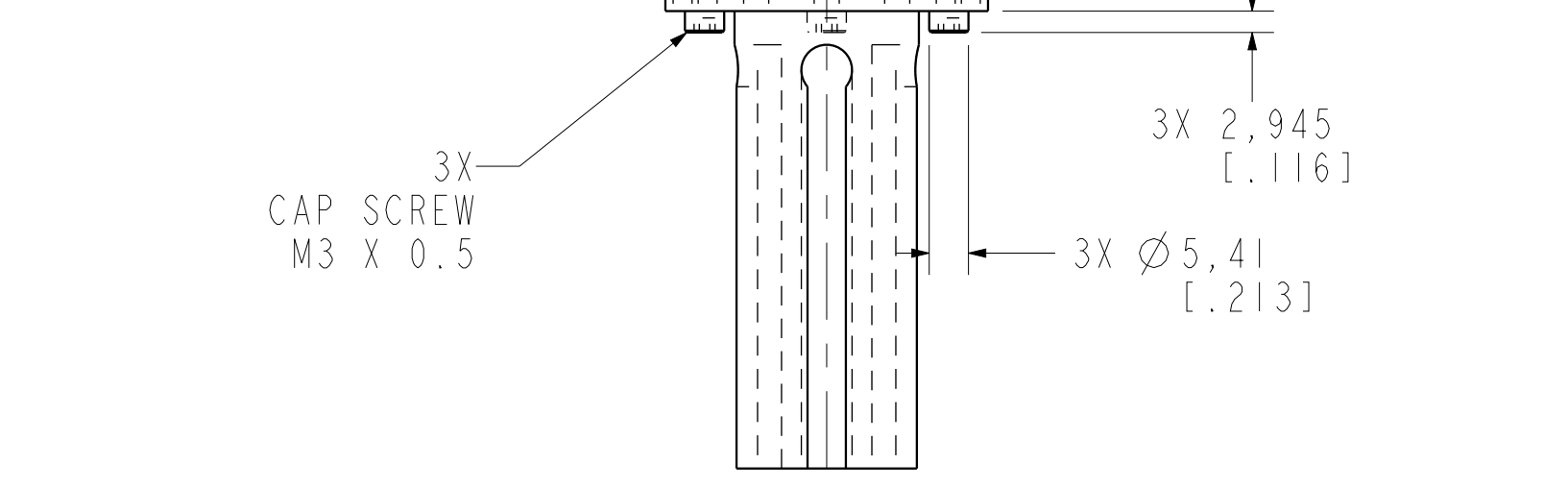
2X 13,005
[.512]

113,919
[4.485]

12,979
[.511]

12,979
[.511]

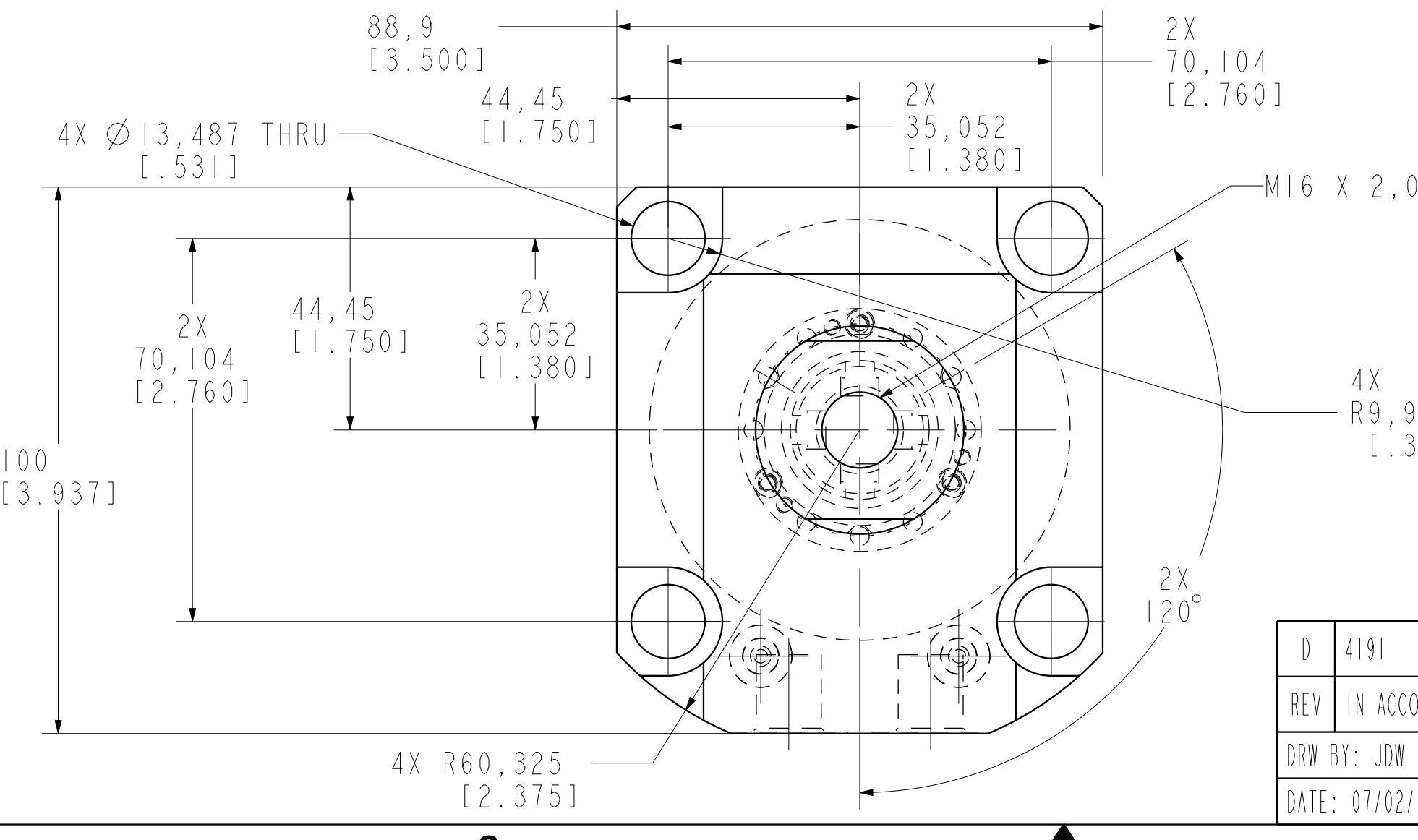
88,9
[3.500]



3X CAP SCREW M3 X 0.5

3X 2,945
[.116]

3X Ø5,41
[.213]



88,9
[3.500]

44,45
[1.750]

2X 70,104
[2.760]

2X 35,052
[1.380]

4X Ø13,487 THRU
[.531]

44,45
[1.750]

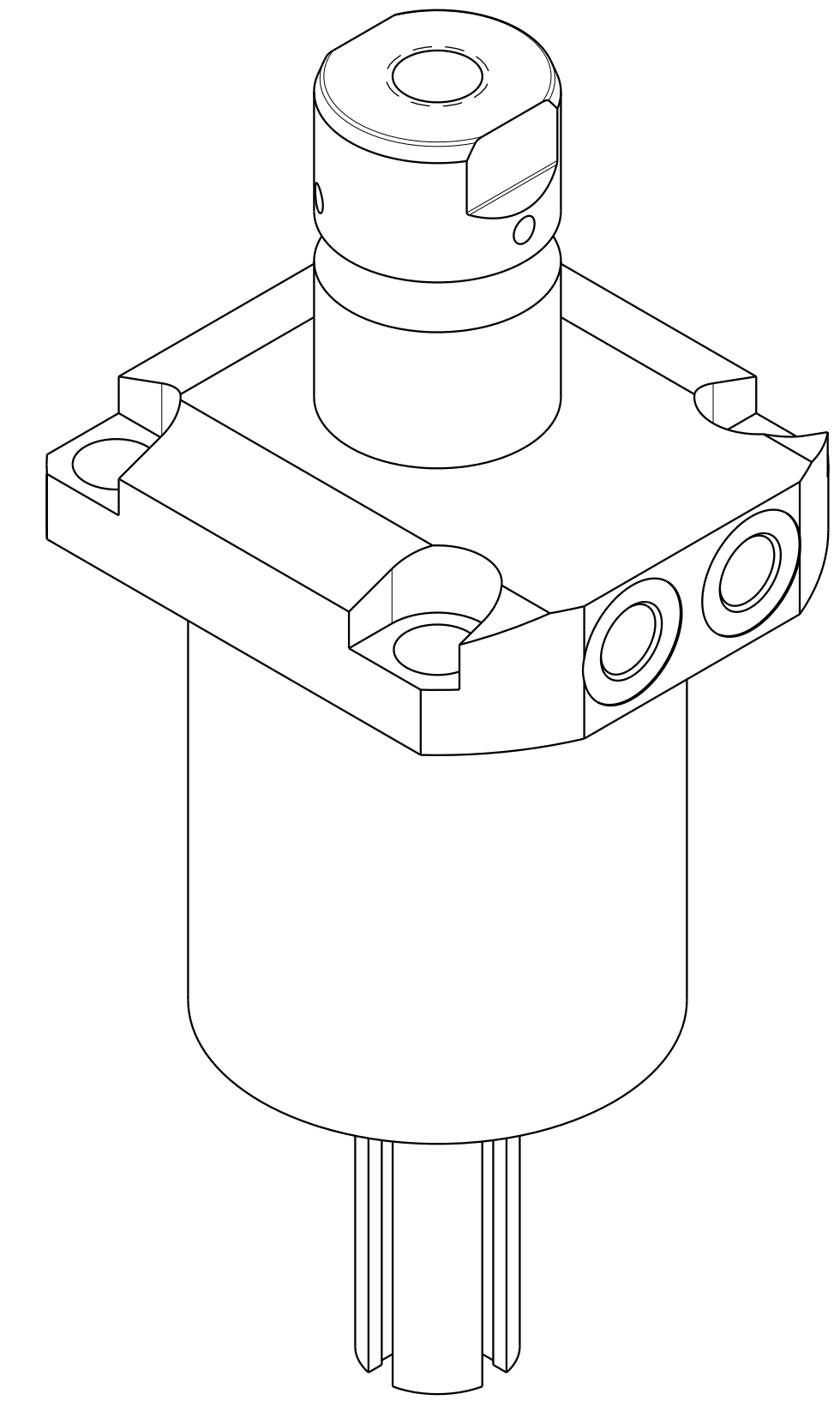
2X 35,052
[1.380]

M16 X 2,0 ∇ 19,05
[.750]

4X R9,931
[.391]

2X 120°

4X R60,325
[2.375]



ILCM41463321PS REV D ECN 4191

CAD CONTROL DRAWING			
		VEKTEK, INC. 1334 E. SIXTH AVE. P.O. BOX 625 EMPORIA, KS. 66801 U.S.A.	
D 4191	RELEASE	JDW	05/22/20
REV IN ACCORDANCE WITH ECN	EFFECTIVE DATE	REVISED BY	DATE
DRW BY: JDW	DRAWING STATUS: Released		41463321PS A
DATE: 07/02/14	PRODUCTION APPROVED FOR RELEASED STATUS ONLY		SC,LP,TF,TC,33 KN,DA,RH,PS
TOLERANCES DO NOT APPLY DIMENSIONS ARE NOMINAL		UNITS mm (inch)	SIZE D
			ILCM41463321PS REV D
			FORM FEG036, Rev. C