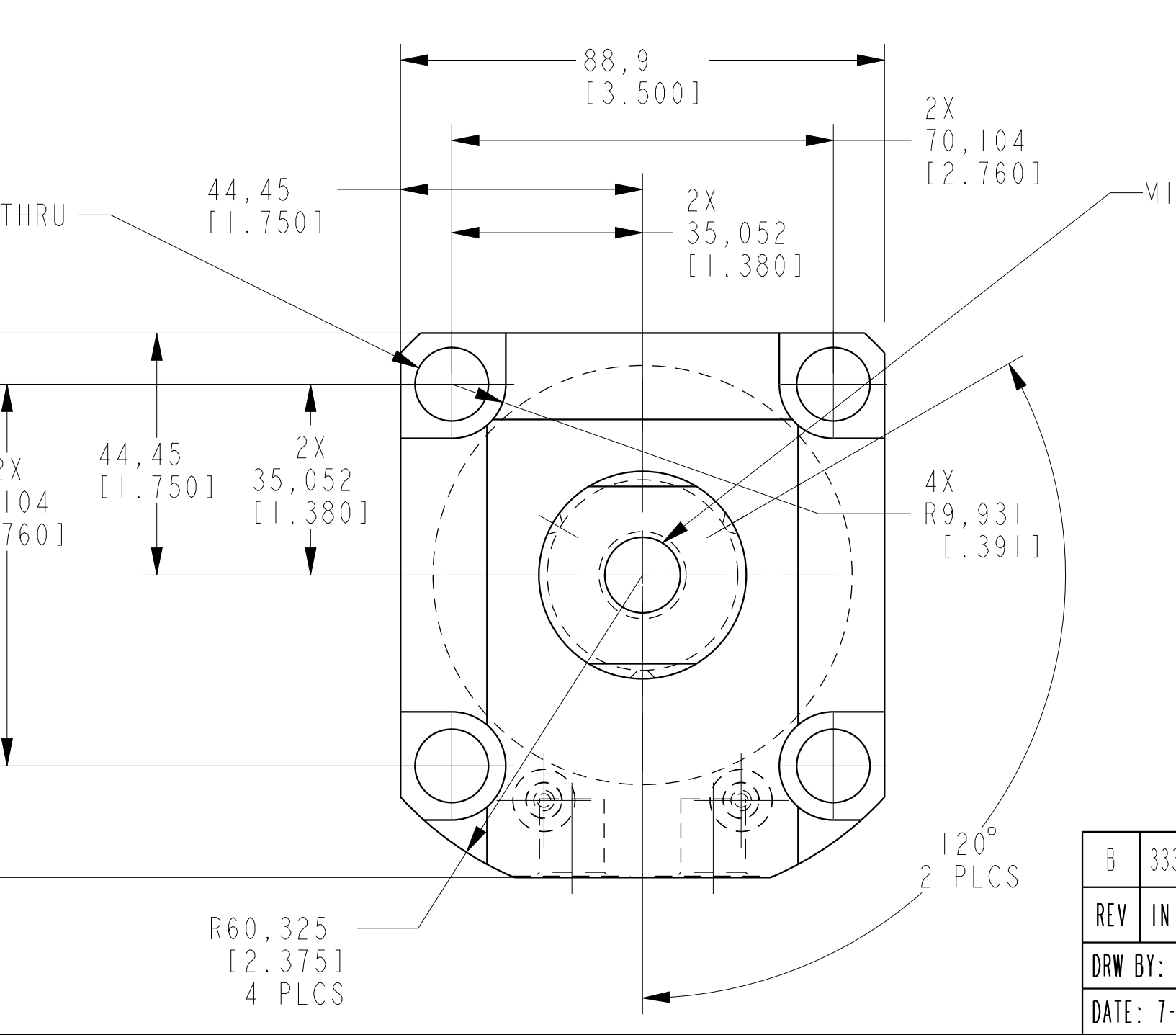
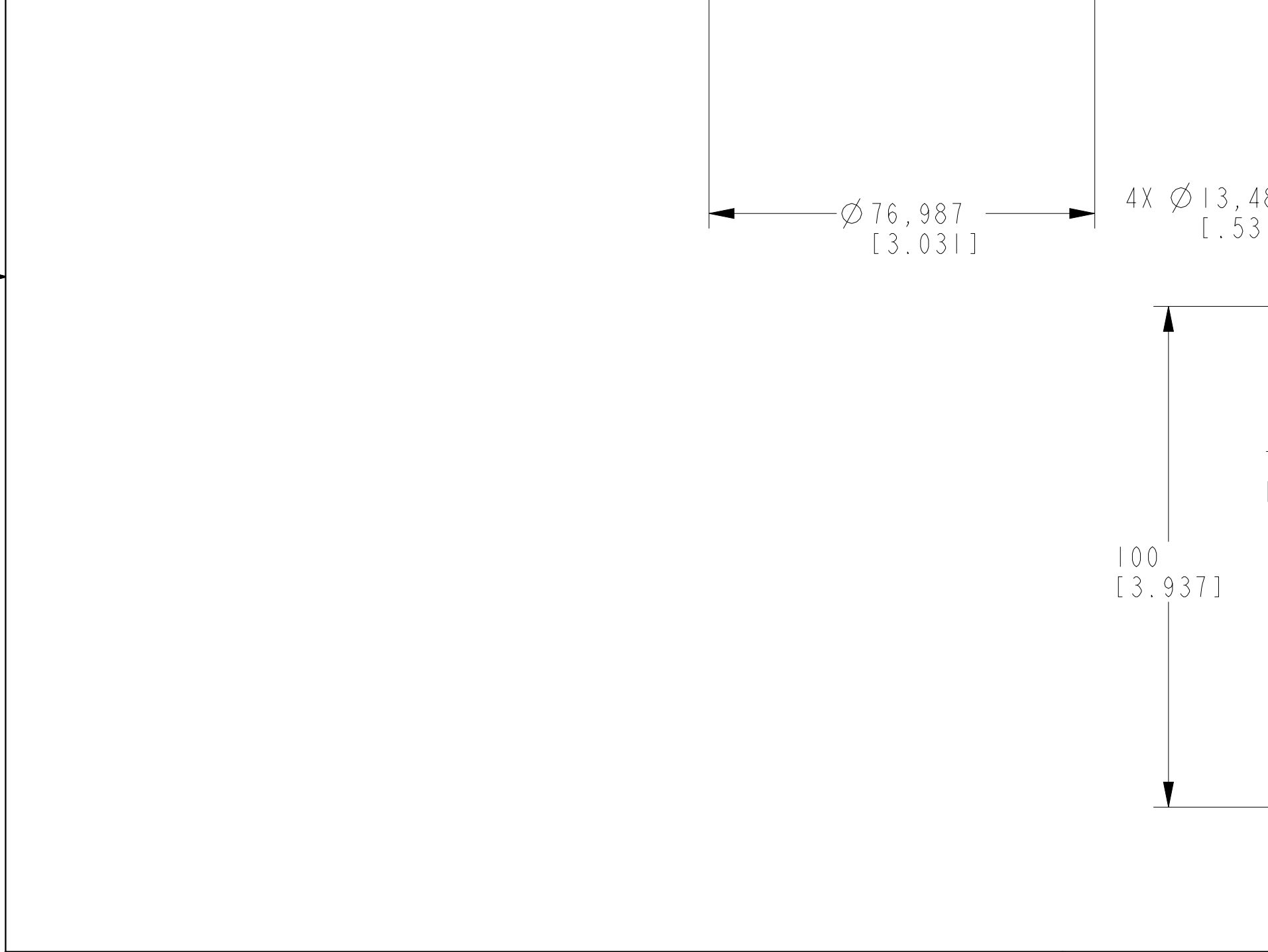


I LCM41463323 REV B ECN 3336



M16 X 2,0 ▽ 19,05 [.750]

CAD CONTROL DRAWING		VEKTEK [®]	
VEKTEK, INC. 1334 E. SIXTH AVE. EMPORIA, KS. 66801 U.S.A.		P.O. BOX 625 U.S.A.	
B 3336	RELEASE	GAR	11/17/17
REV IN ACCORDANCE WITH ECN	EFFECTIVE DATE	REVISED BY	DATE
DRW BY: JDW	DRAWING STATUS: Released		TOLERANCES DO NOT APPLY UNLESS SPECIFIED
DATE: 7-15-11	PRODUCTION APPROVED FOR RELEASED STATUS ONLY		UNITS: mm (inch)
41463323		B	SC, LP, TF, TC, 33 KN, DA, RH, LS
REFERENCE MODEL		REF REV	SIZE D
I LCM41463323		REV B	FORM FEG036, Rev. C