

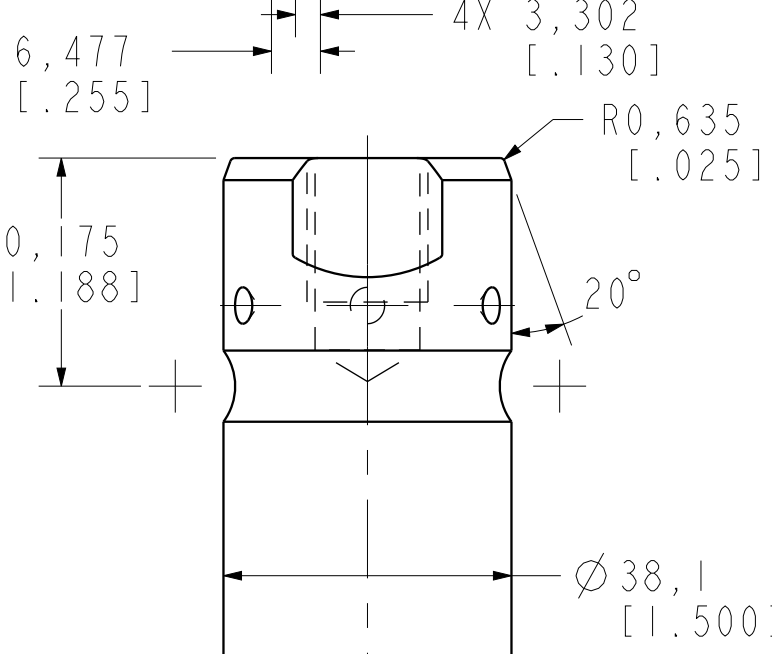
4X 5,283  
[.208]

4X 6,985  
[.275]

4X 6,477  
[.255]

4X 3,302  
[.130]

32,563  
[1.282]



30,175  
[1.188]

R0,635  
[.025]

20°

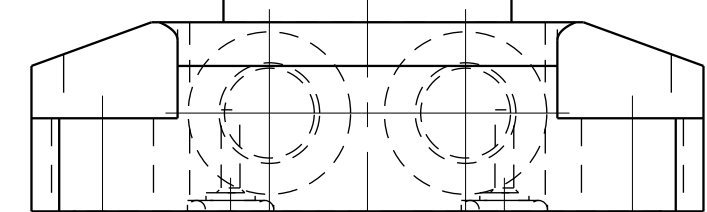
2,921  
[.115]

45°

Ø38,1  
[1.500]

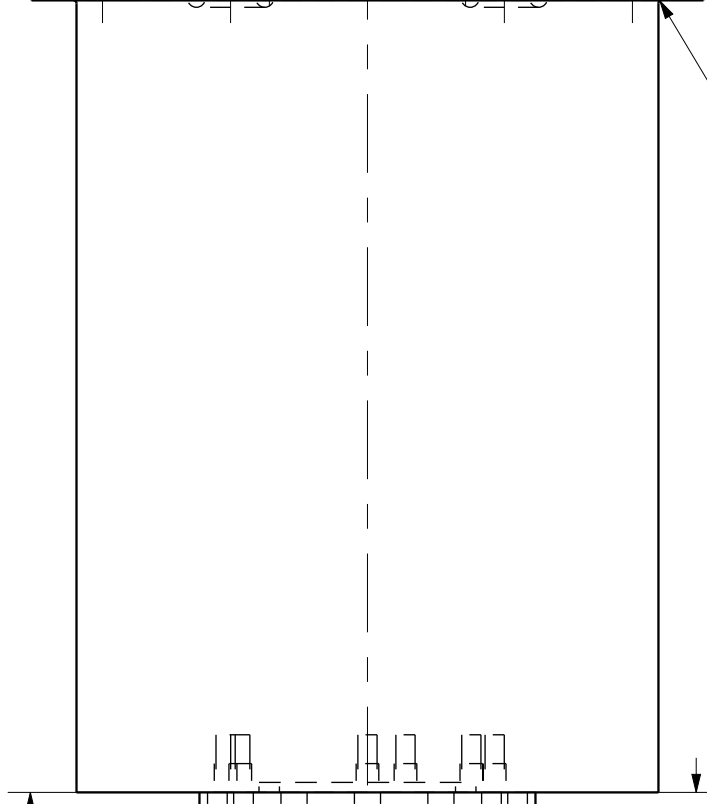
Ø35,001  
[1.378]

R7,925  
[.312]



R0,381  
[.015]

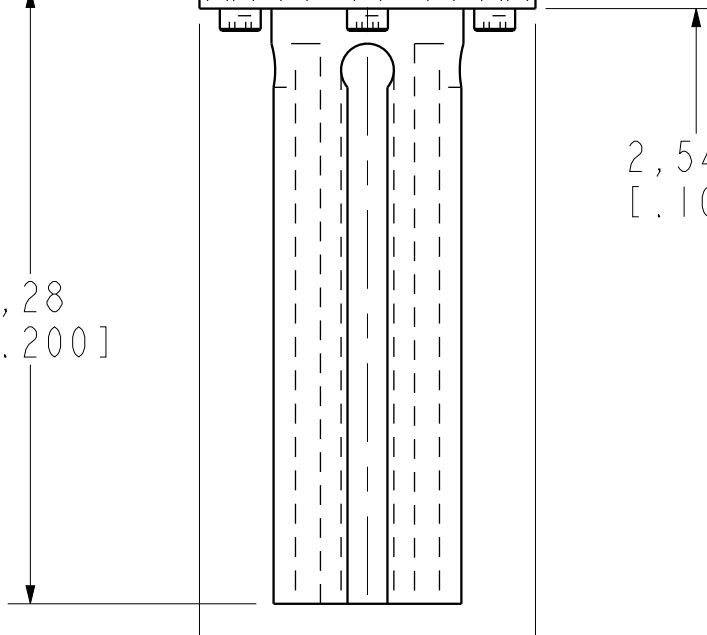
4X 12,7  
[.500]



81,28  
[3.200]

2,54  
[.100]

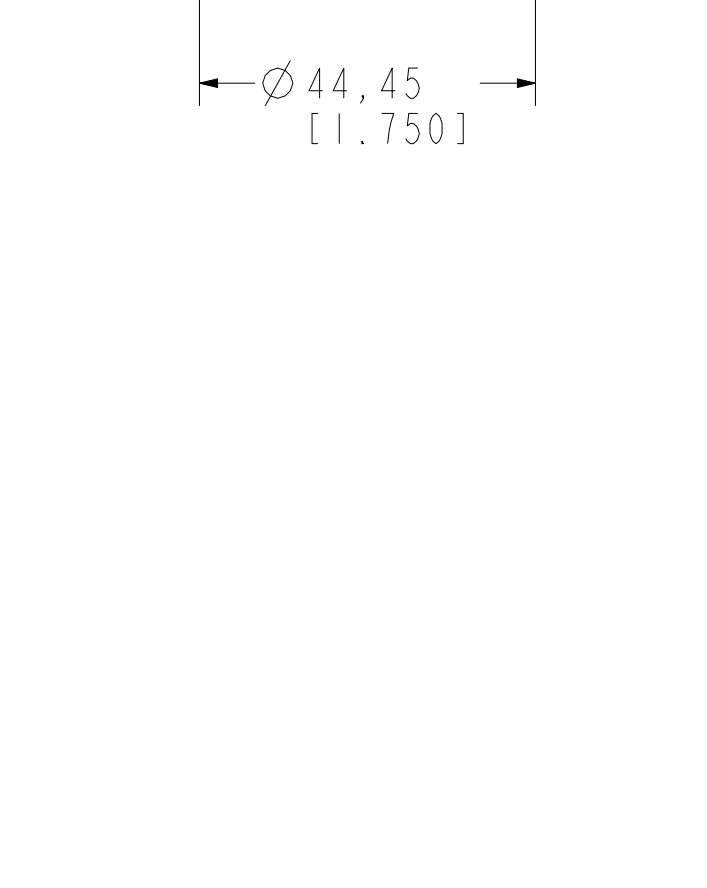
Ø44,45  
[1.750]



4X 6,985  
[.275]

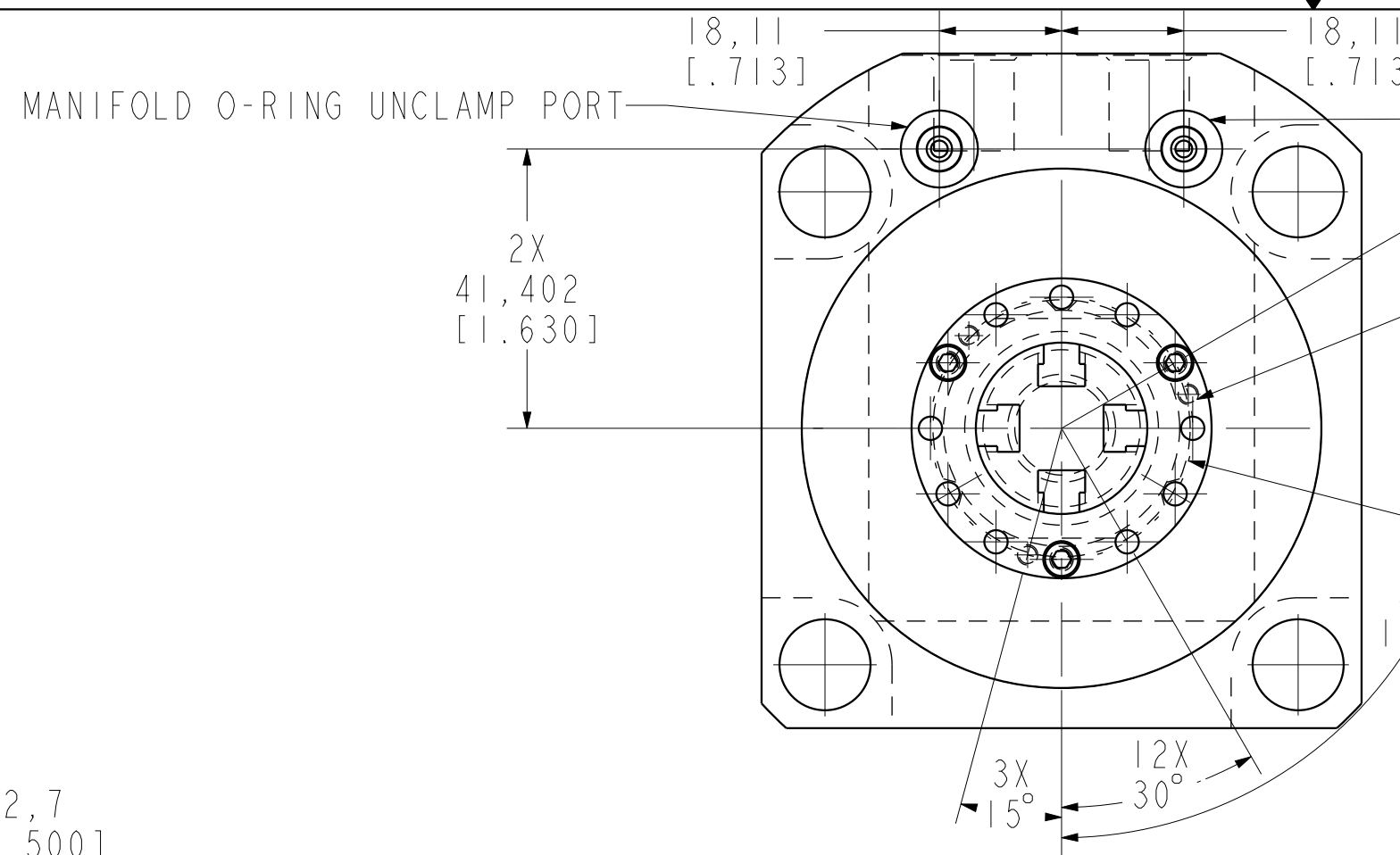
4X 70,612  
[2.780]

Ø25,4  
[1.000]



100  
[3.937]

4X R60,325  
[2.375]



18,11  
[.713]

MANIFOLD O-RING UNCLAMP PORT

18,11  
[.713]

MANIFOLD O-RING CLAMP PORT

2X 41,402  
[1.630]

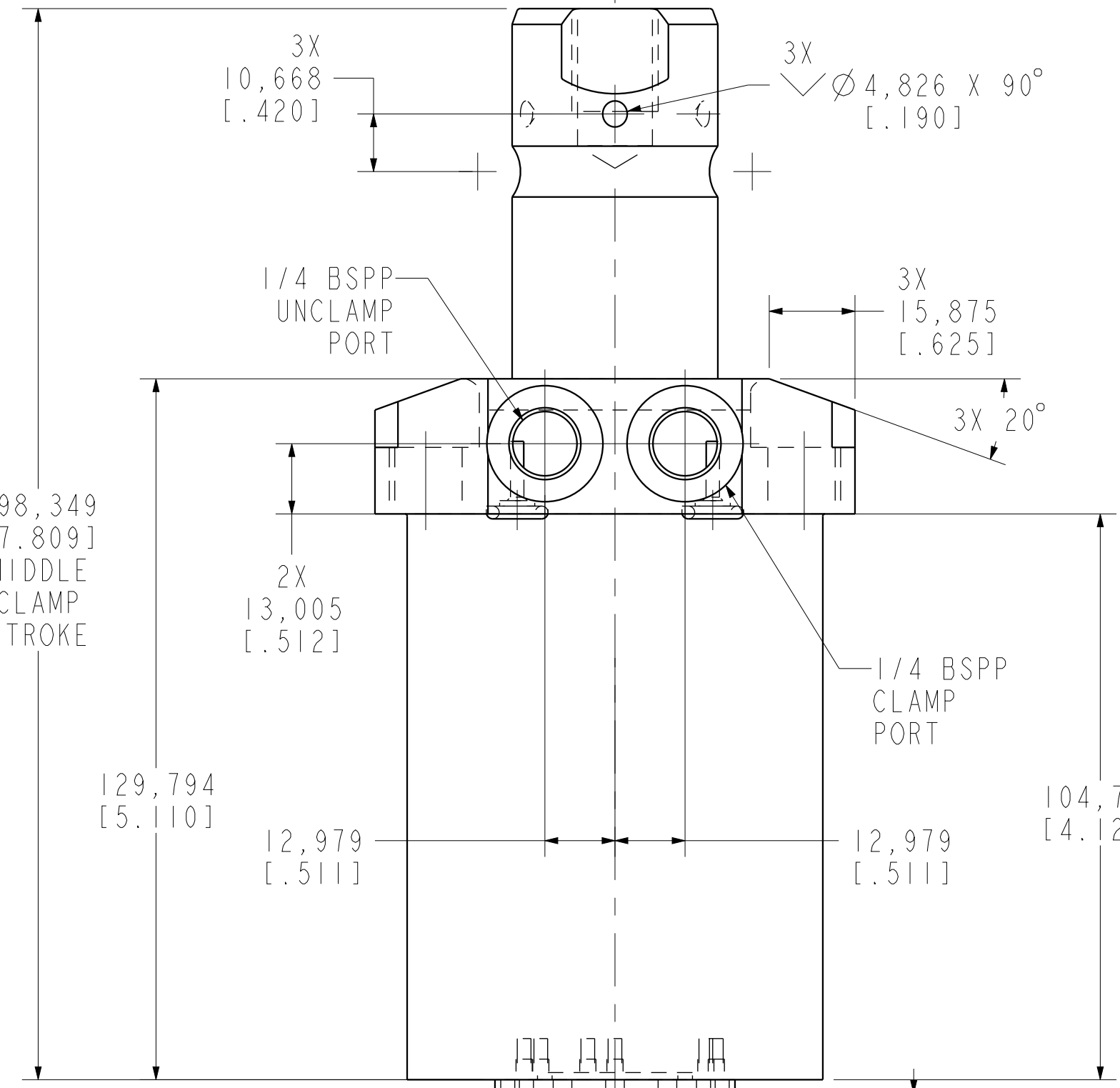
6X M3 X 0.5  $\nabla$ 3,81  
[.150]

Ø38,862 BOLT CIRCLE  
[1.530]

3X 120°

3X 15°

12X 30°



3X 10,668  
[.420]

3X  $\nabla$ 4,826 X 90°  
[.190]

1/4 BSPP UNCLAMP PORT

3X 15,875  
[.625]

3X 20°

198,349  
[7.809]

2X 13,005  
[.512]

1/4 BSPP CLAMP PORT

129,794  
[5.110]

12,979  
[.511]

12,979  
[.511]

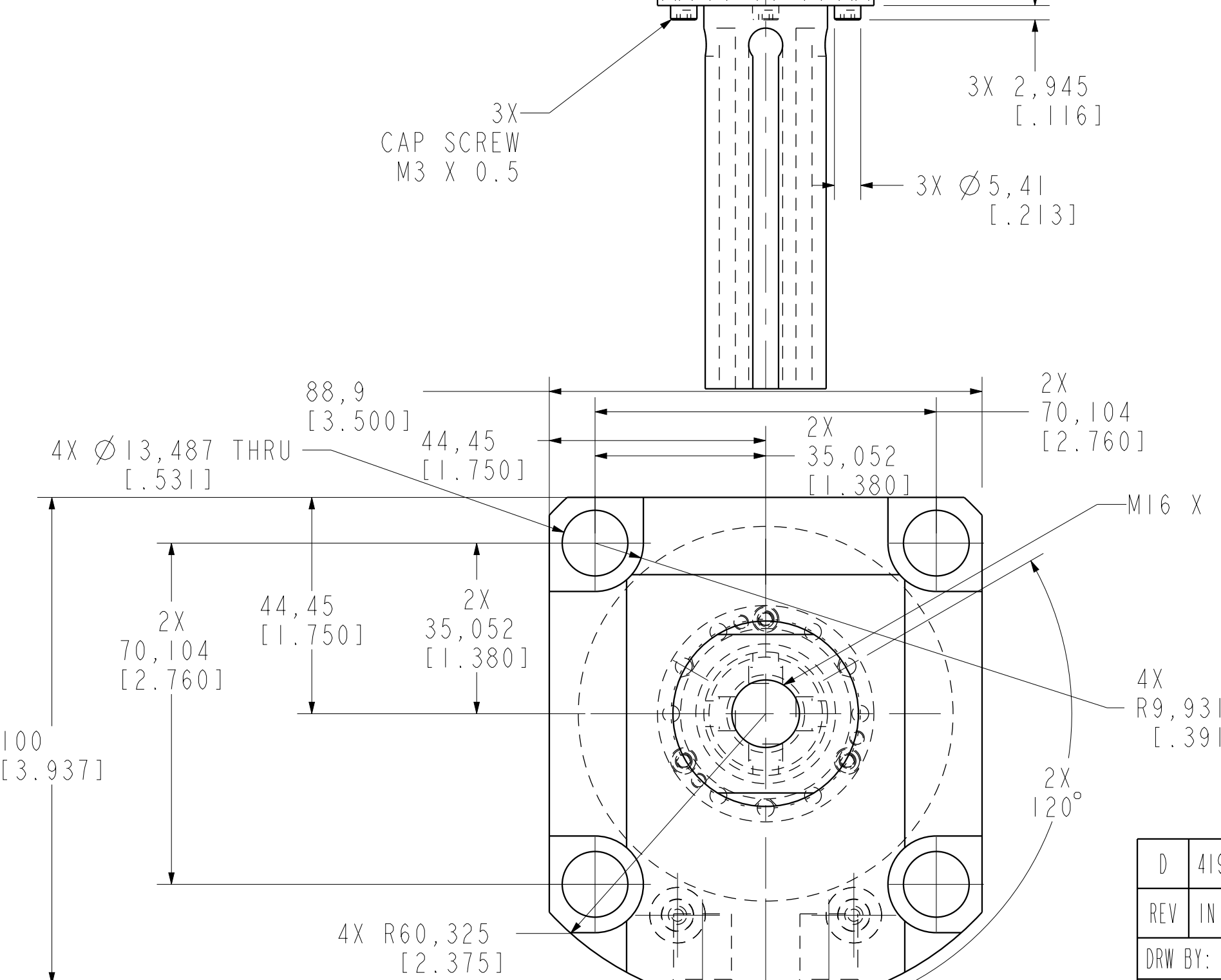
104,775  
[4.125]

3X 2,945  
[.116]

3X 2,945  
[.116]

3X Ø5,41  
[.213]

3X CAP SCREW  
M3 X 0.5



88,9  
[3.500]

4X Ø13,487 THRU  
[.531]

44,45  
[1.750]

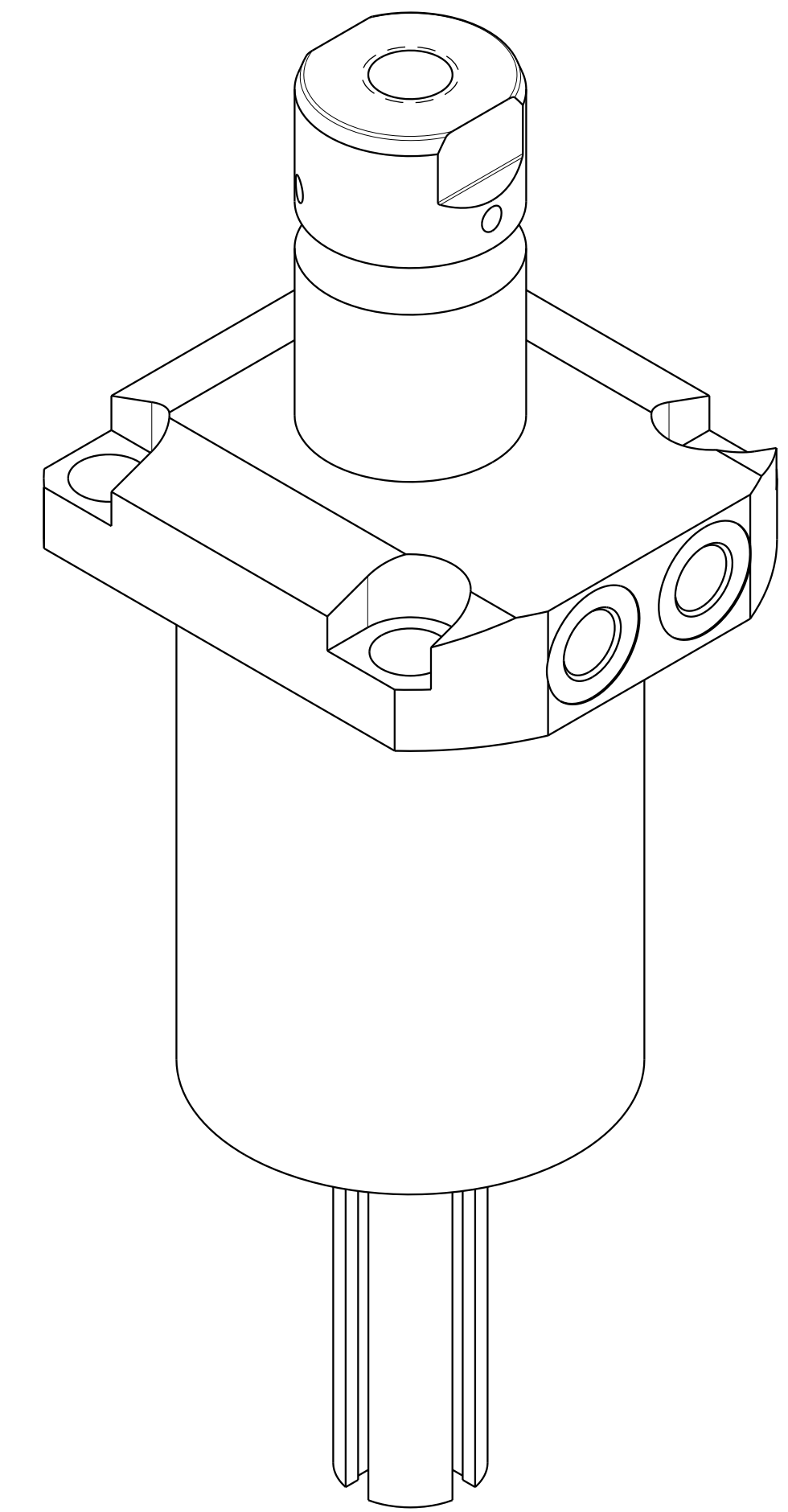
2X 35,052  
[1.380]

2X 70,104  
[2.760]

M16 X 2,0  $\nabla$ 19,05  
[.750]

4X R9,931  
[.391]

2X 70,104  
[2.760]



I LCM41463324PS REV D ECN 4191

CAD CONTROL DRAWING			
		VEKTEK, INC. 1334 E. SIXTH AVE. P.O. BOX 625 EMPORIA, KS. 66801 U.S.A.	
D 4191	RELEASE	JDW	05/22/20
REV IN ACCORDANCE WITH ECN	EFFECTIVE DATE	REVISED BY	DATE
DRW BY: JDW	DRAWING STATUS: <b>Released</b>		TOLERANCES DO NOT APPLY UNITS
DATE: 07/02/14	PRODUCTION APPROVED FOR RELEASED STATUS ONLY		mm (inch)
41463324PS	A	SC,LP,TF,TC,33 KN,DA,LH,LS,PS	SIZE D
I LCM41463324PS	REV D	FORM FEG036, Rev. C	