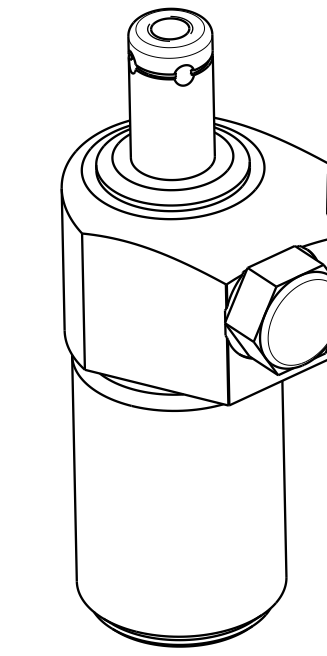


1

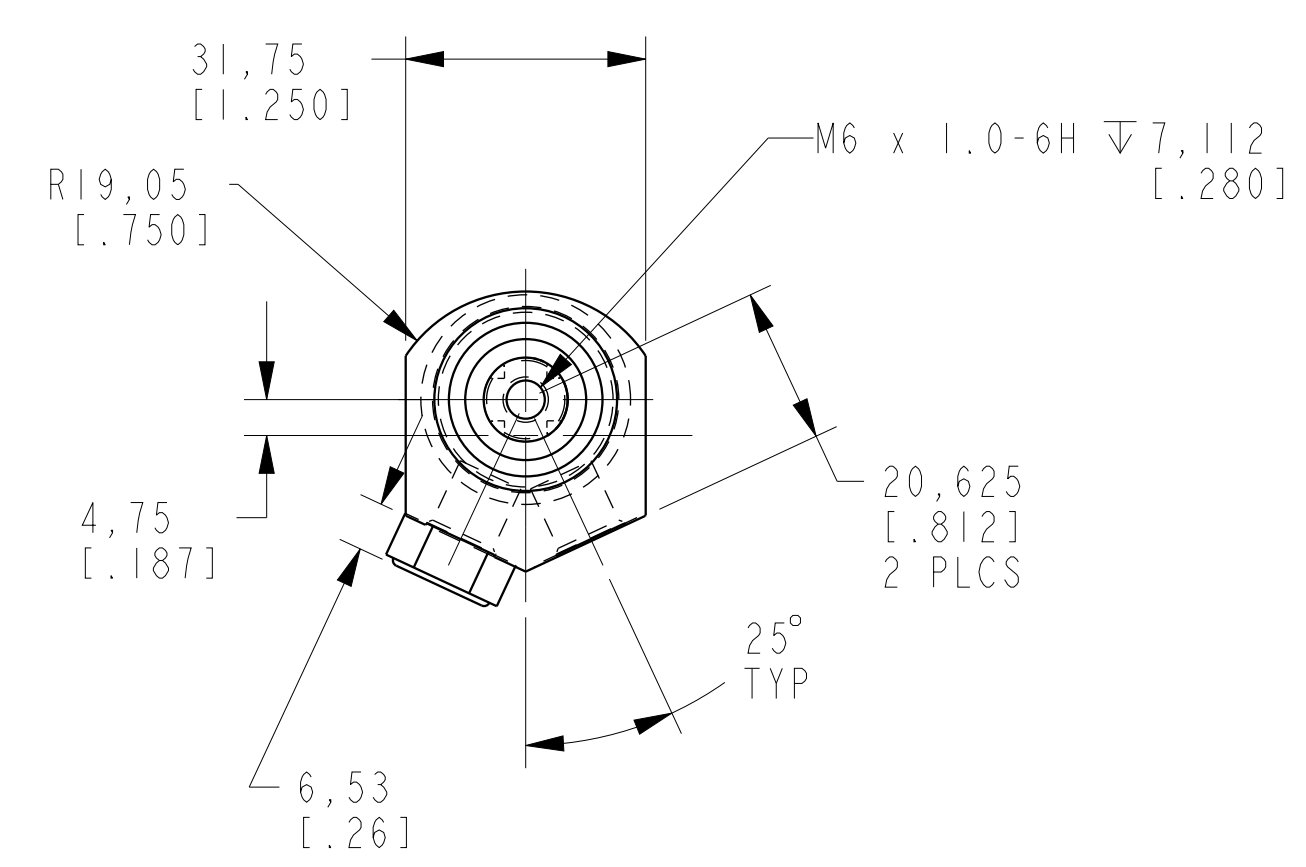
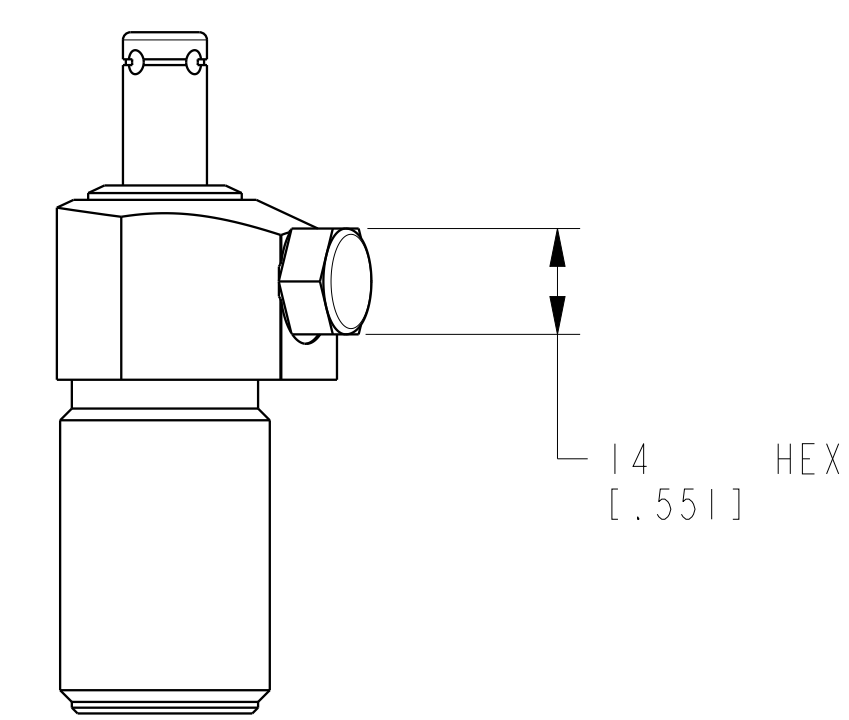
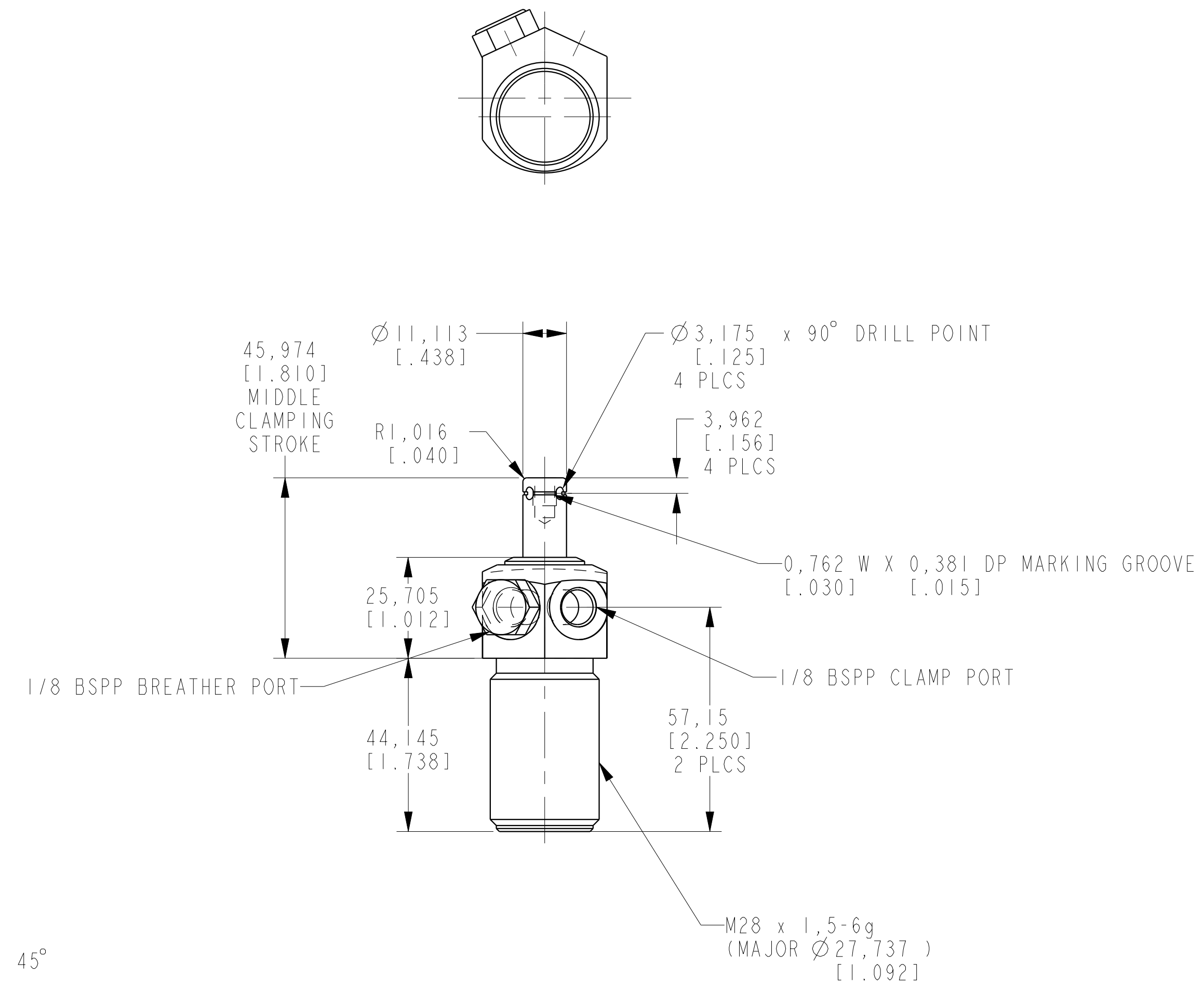
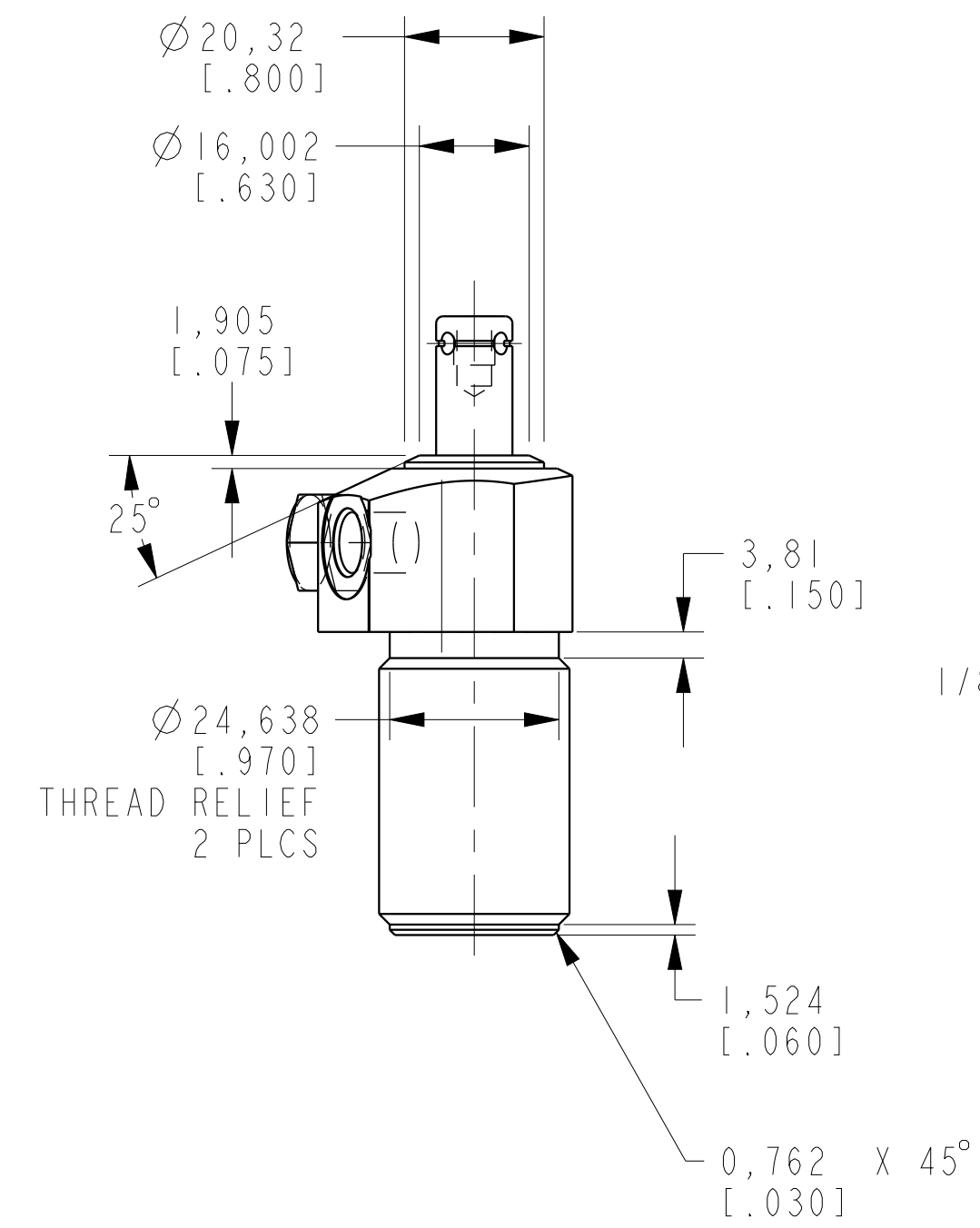
2

3

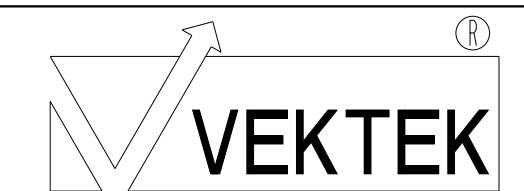
4



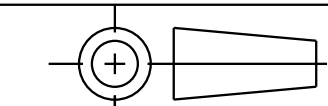
1LCM41500212 REV C ECN 3531



CAD CONTROL DRAWING



VEKTEK, INC.  
 1334 E. SIXTH AVE. P.O. BOX 625  
 EMPORIA, KS. 66801 U.S.A.



|         |                        |  |            |          |                         |           |                      |
|---------|------------------------|--|------------|----------|-------------------------|-----------|----------------------|
| C       | 3531                   | RELEASE                                      | NPETERS    | 07/23/18 | 41500212                | B         | SC, TB, 2 KN, SA, LH |
| REV     | IN ACCORDANCE WITH ECN | EFFECTIVE DATE                               | REVISED BY | DATE     | REFERENCE MODEL         | REF REV   | ****                 |
| DRW BY: | K. ROEMER              | DRAWING STATUS: Released                     |            |          | TOLERANCES DO NOT APPLY | UNITS     | SIZE                 |
| DATE:   | 03-27-06               | PRODUCTION APPROVED FOR RELEASED STATUS ONLY |            |          | DIMENSIONS ARE NOMINAL  | mm (inch) | D                    |
|         |                        |  |            |          |                         |           | 1LCM41500212         |
|         |                        |  |            |          |                         |           | REV C                |

1

2

3

4

SHEET 1 OF 1