

1

2

3

4

D

D

C

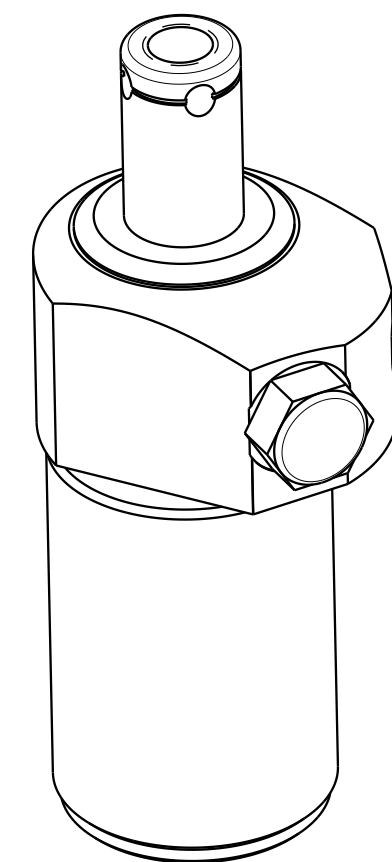
C

B

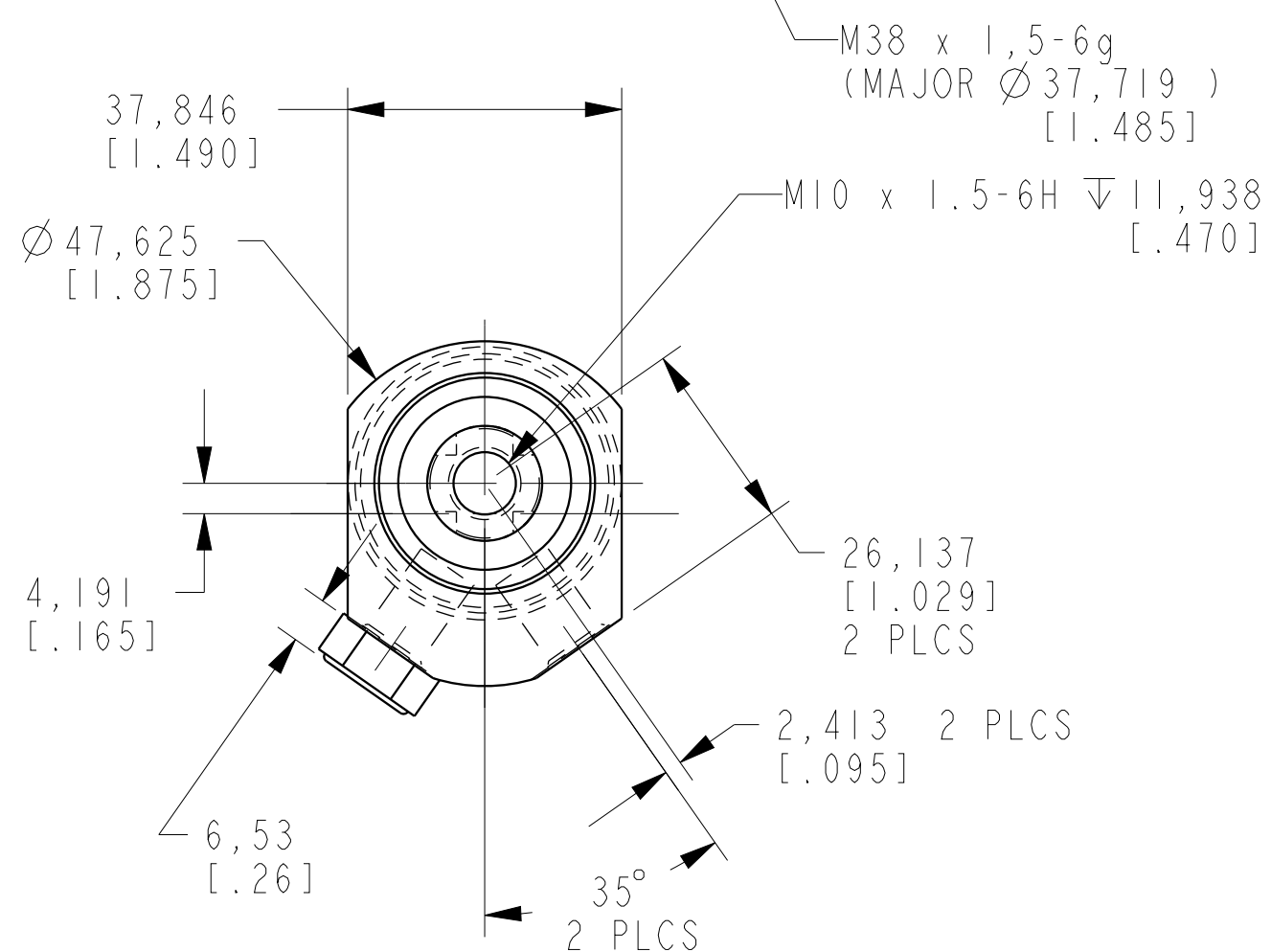
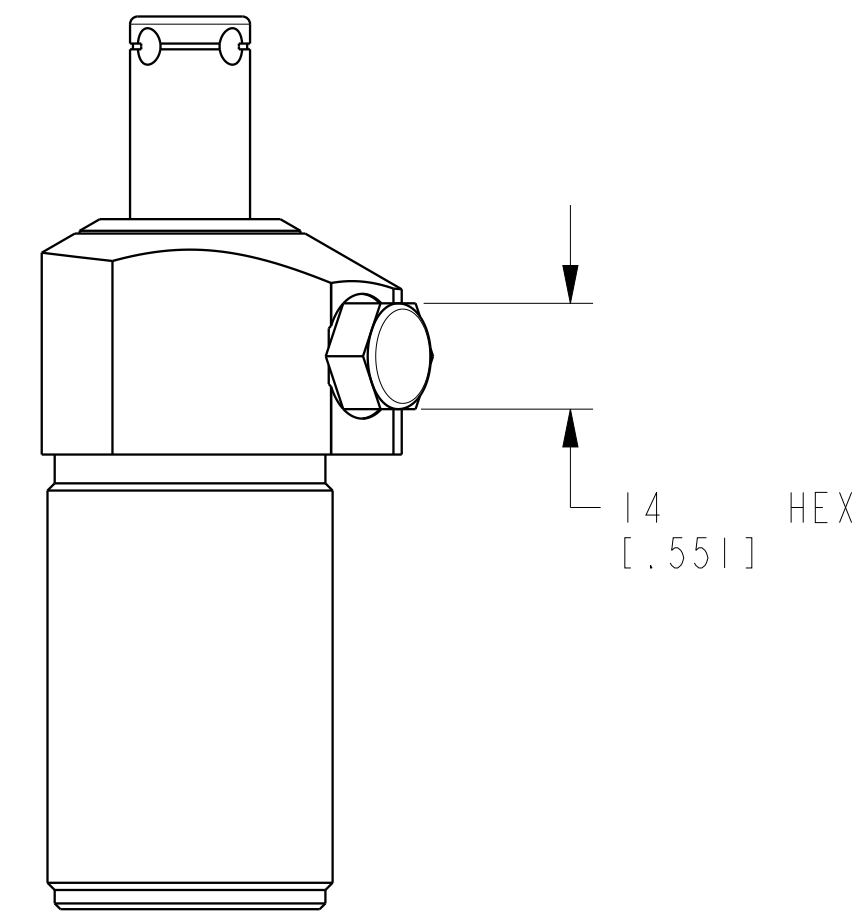
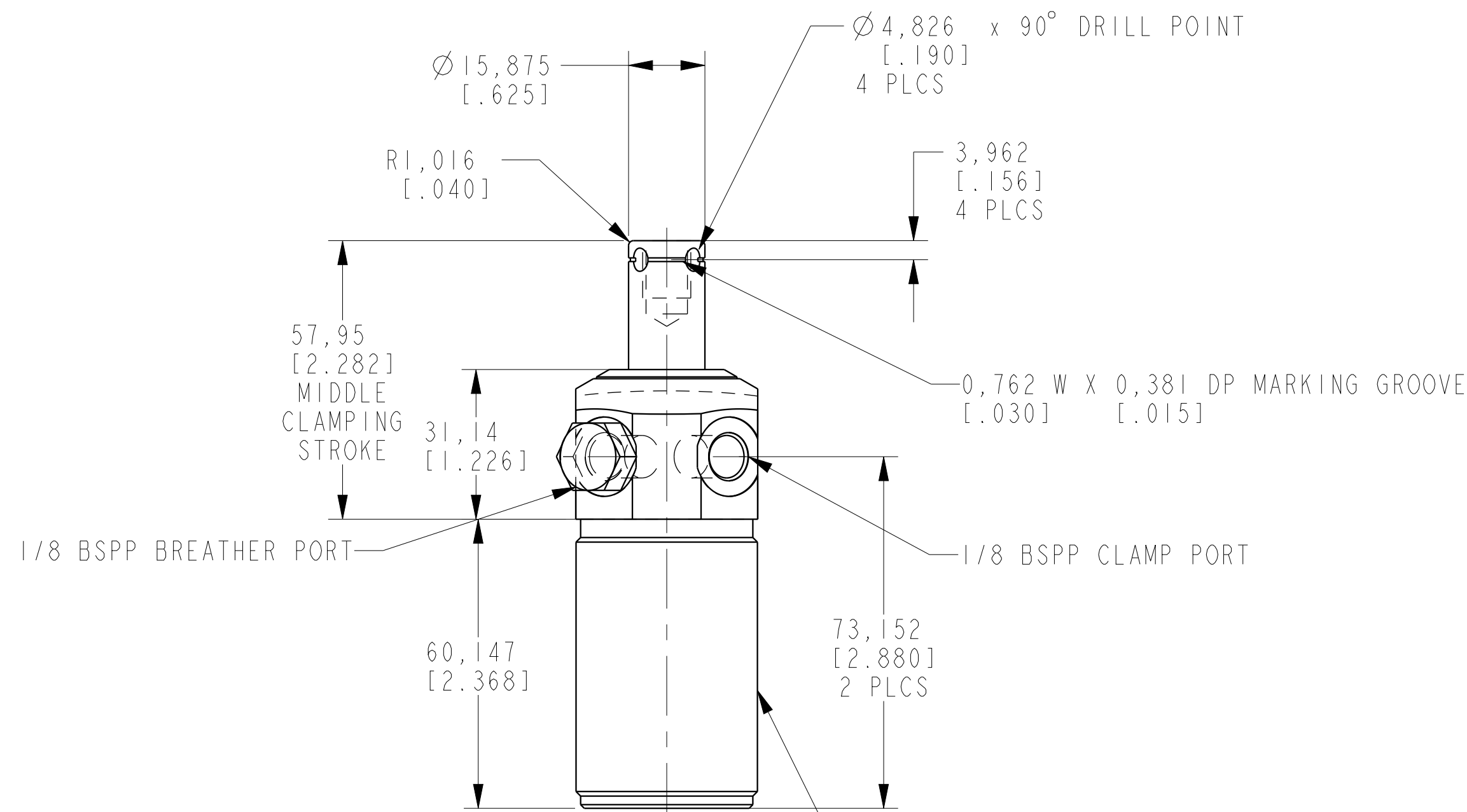
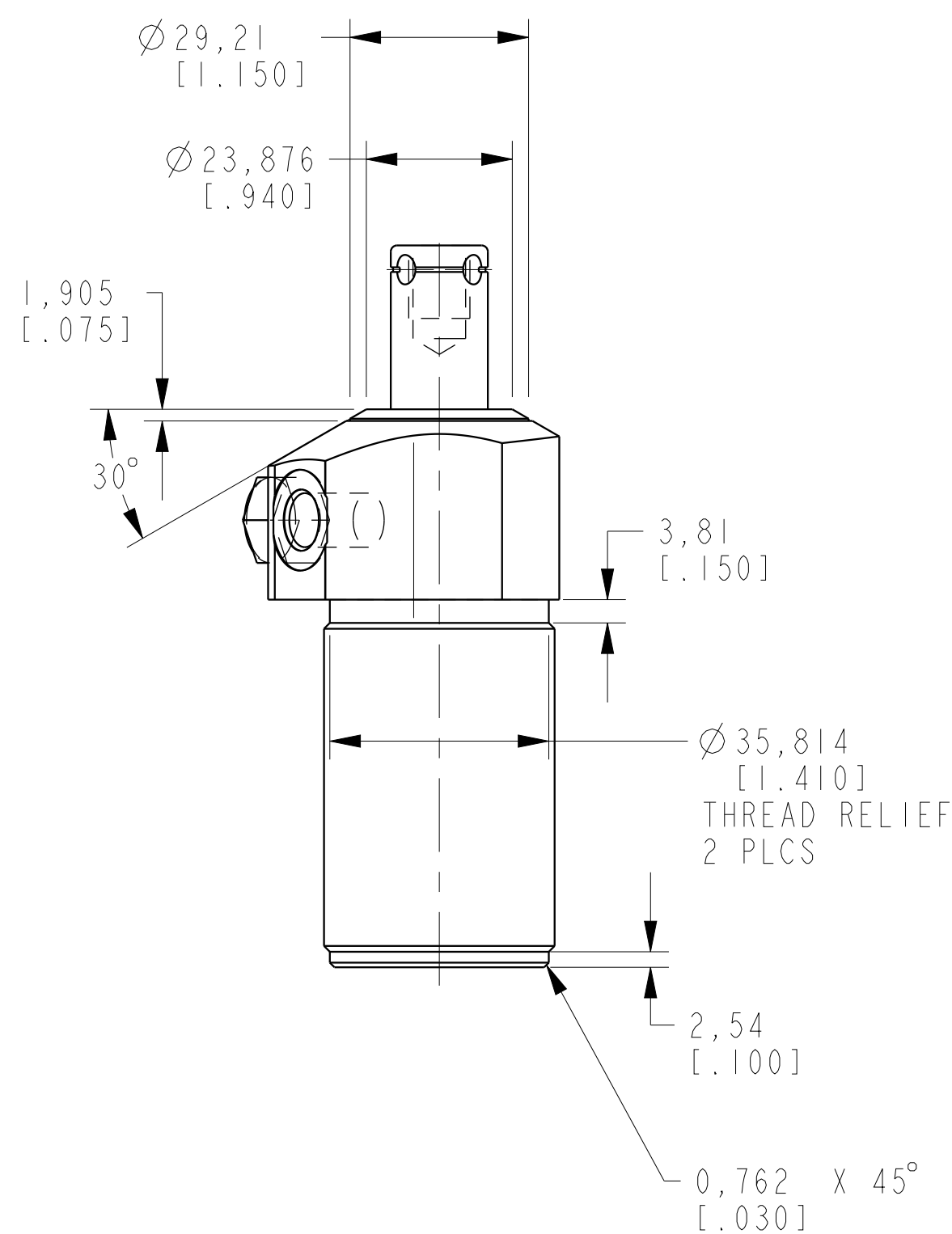
B

A

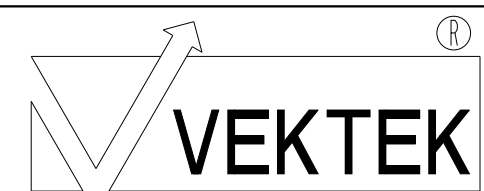
A



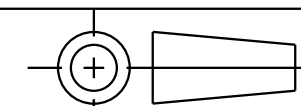
ILCM41500511 REV C ECN 3531



CAD CONTROL  
DRAWING



VEKTEK, INC.  
1334 E. SIXTH AVE. P.O. BOX 625  
EMPORIA, KS. 66801 U.S.A.



C	3531	RELEASE	NPETERS	07/23/18	41500511	B	SC,TB,4.9 KN,SA,RH
REV	IN ACCORDANCE WITH ECN	EFFECTIVE DATE	REVISED BY	DATE	REFERENCE MODEL	REF REV	****
DRW BY: K. ROEMER	DRAWING STATUS: <b>Released</b>				TOLERANCES DO NOT APPLY	UNITS	SIZE
DATE: 03-27-06	PRODUCTION APPROVED FOR RELEASED STATUS ONLY				DIMENSIONS ARE NOMINAL	mm [inch]	D

ILCM41500511	REV C
--------------	-------

FORM FEG036, Rev. C