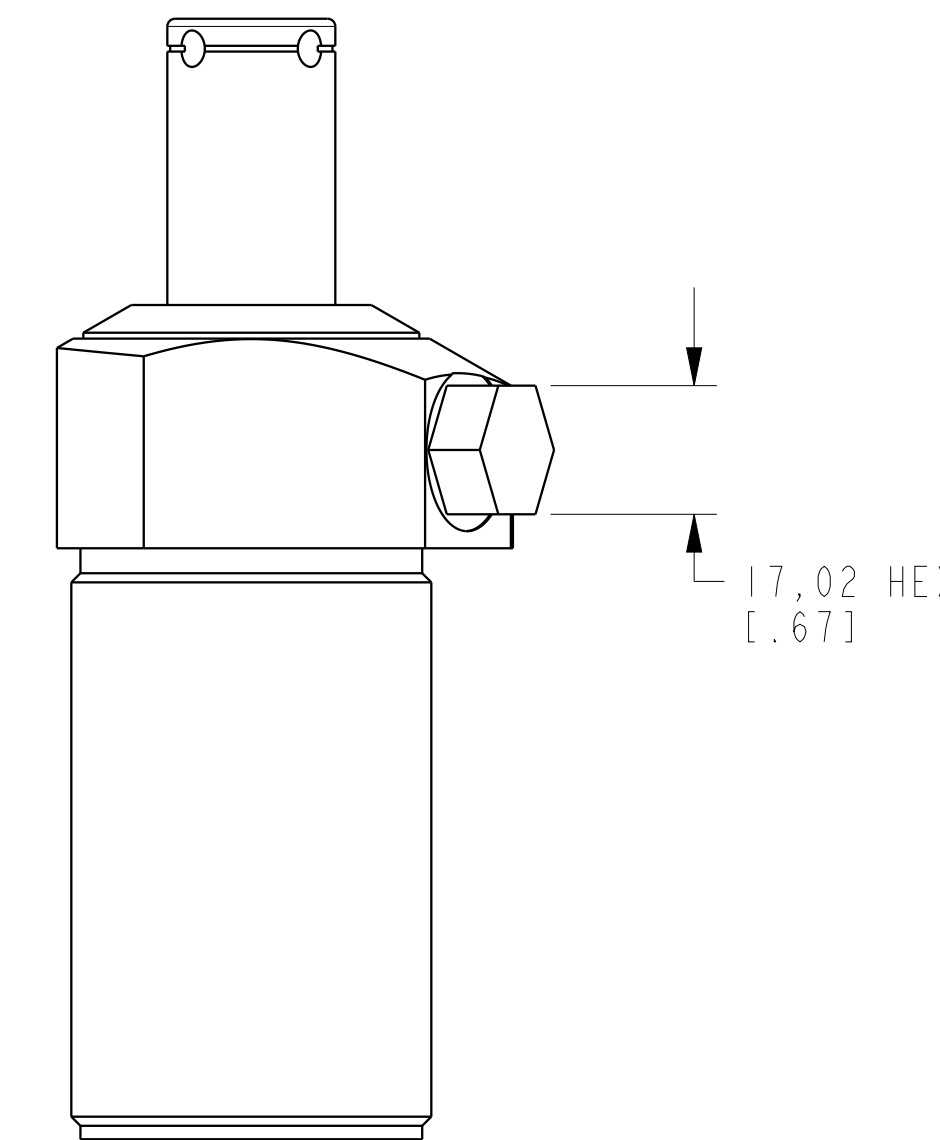
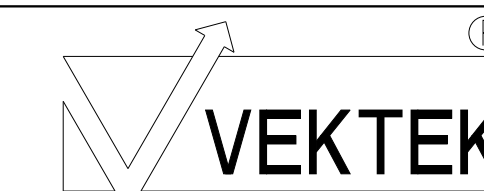


I L C M 4 1 5 0 1 1 1 1 REV C ECN 3600



CAD CONTROL DRAWING



VEKTEK, INC.
1334 E. SIXTH AVE. P.O. BOX 625
EMPORIA, KS. 66801 U.S.A.

C	3600	RELEASE	NPETERS	10/4/18
REV	IN ACCORDANCE WITH ECN	EFFECTIVE DATE	REVISED BY	DATE
DRW BY:	DRAWING STATUS: Released			
DATE:	PRODUCTION APPROVED FOR RELEASED STATUS ONLY			

41501111	B	SC, TB, 11.6 KN, SA, RH
TOLERANCES DO NOT APPLY DIMENSIONS ARE NOMINAL	UNITS mm (inch)	SIZE D
		I L C M 4 1 5 0 1 1 1 1
		REV C