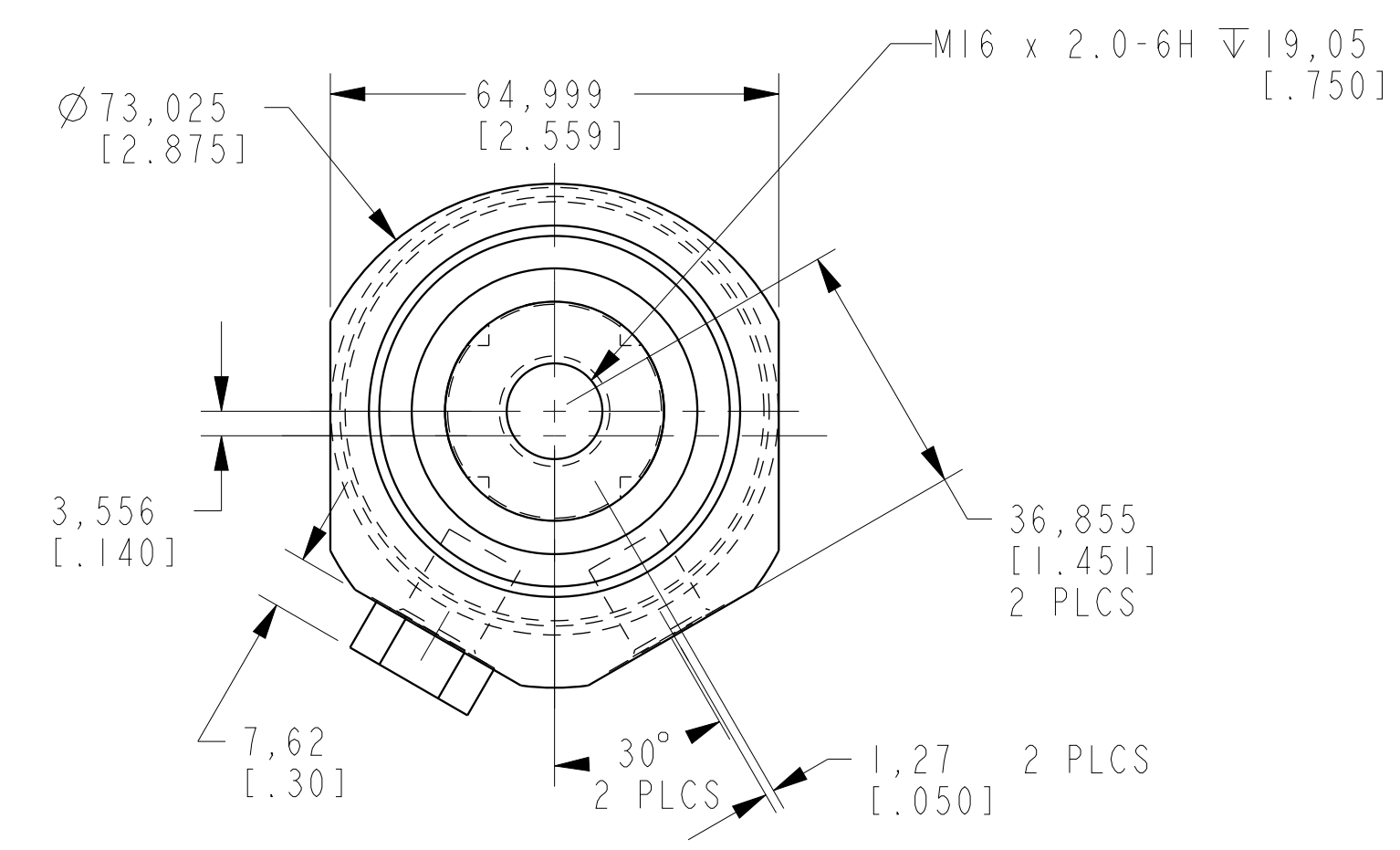


I L C M 4 1 5 0 2 2 1 2 REV C ECN 3600



CAD CONTROL DRAWING		
	VEKTEK, INC. 1334 E. SIXTH AVE. P.O. BOX 625 EMPORIA, KS. 66801 U.S.A.	

C	3600	RELEASE	NPETERS	10/8/18
REV	IN ACCORDANCE WITH ECN	EFFECTIVE DATE	REVISED BY	DATE
DRW BY:	DRAWING STATUS: <b>Released</b>		TOLERANCES DO NOT APPLY UNITS	
DATE:	PRODUCTION APPROVED FOR RELEASED STATUS ONLY		DIMENSIONS ARE NOMINAL mm (inch)	

41502212	F	SC, TB, 22 KN, SA, LH
SIZE D	REV C	I L C M 4 1 5 0 2 2 1 2