

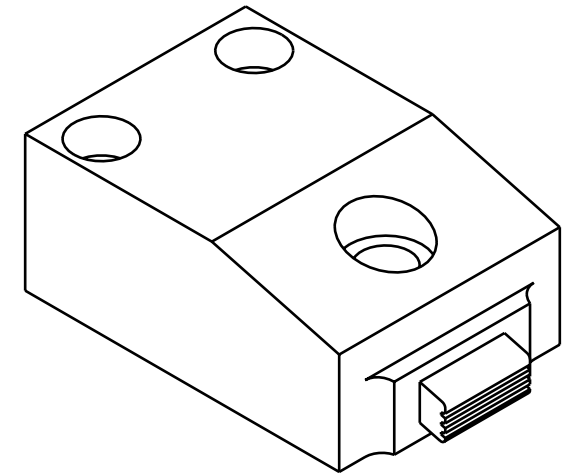
CBORE $\varnothing 15,951 \nabla 3,175$
[.628] [.125]

O-RING EXTEND PORT

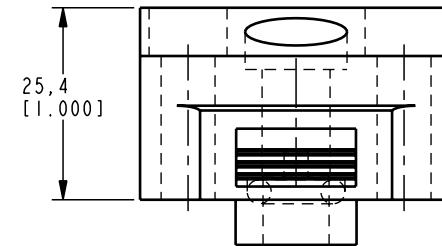
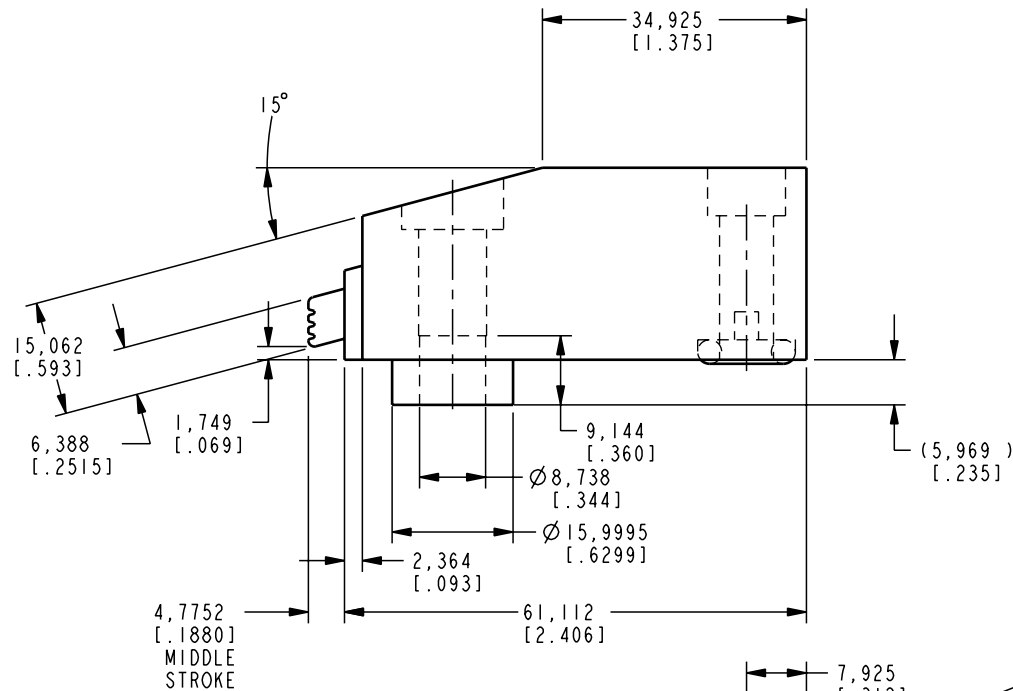
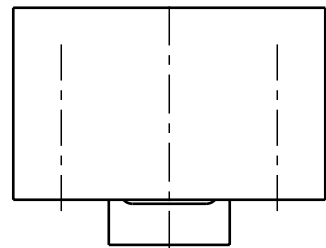
$\varnothing 3,175$
[.125]

$\varnothing 12,927 \nabla 2,642$
[.509] [.104]

7,925
[.312]

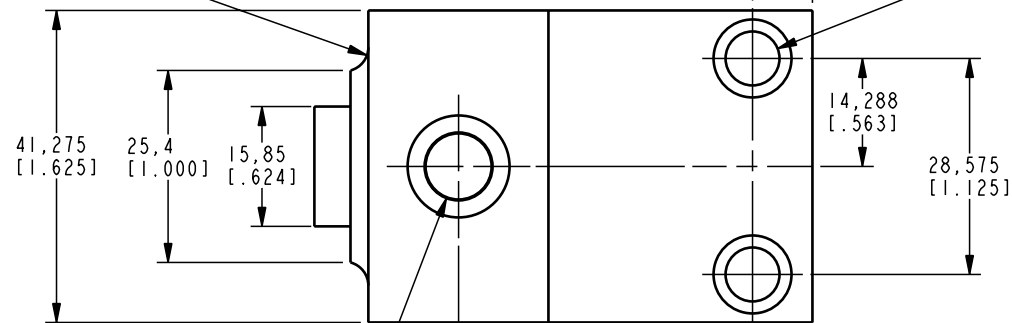


ILCM41531000 REV A ECN 1498



R3,175 TYP
[.125]

$\varnothing 7,137$ THRU
[.281]
CBORE $\varnothing 10,312 \nabla 6,35$
[.406] [.250]
2 PLCS



CAD CONTROL
DRAWING



VEKTEK, INC.
1334 E. SIXTH AVE. P.O. BOX 625
EMPORIA, KS. 66801 U.S.A.



A	1498	RELEASE	K. ROEMER	05-10-06	41531000	F	EDGE CLAMP, MM, 9 KN
REV	IN ACCORDANCE WITH ECN	EFFECTIVE DATE	REVISED BY	DATE	REFERENCE MODEL	REF REV	''''
DRW BY: KR	DRAWING STATUS: Released				TOLERANCES DO NOT APPLY	UNITS	SIZE
DATE: 05-10-06	PRODUCTION APPROVED FOR RELEASED STATUS ONLY				DIMENSIONS ARE NOMINAL	mm [inch]	B
						ILCM41531000	REV A

FORM FEG036, Rev. A

SHEET 1 OF 1