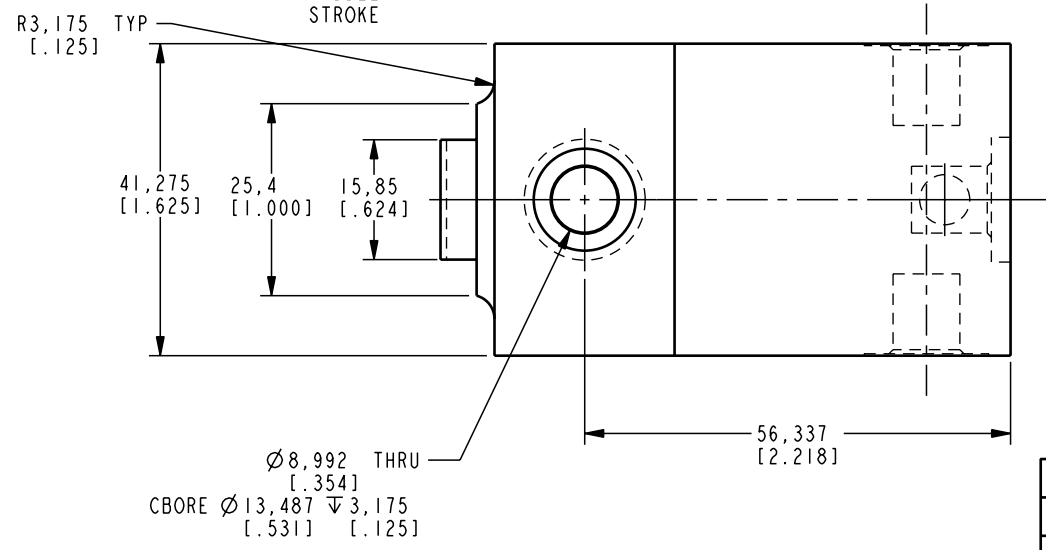
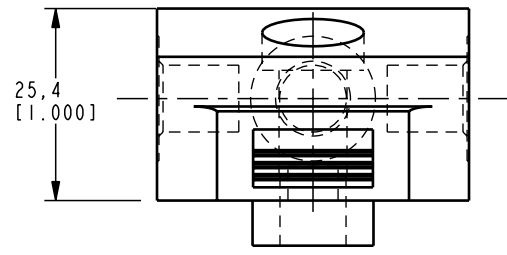
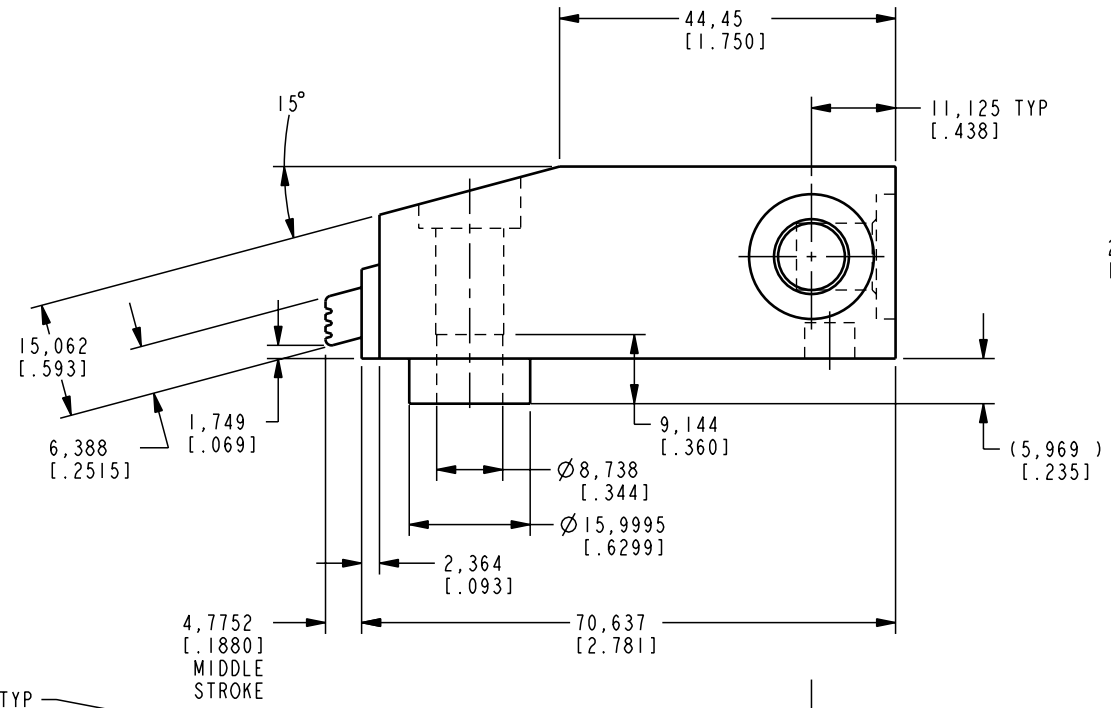
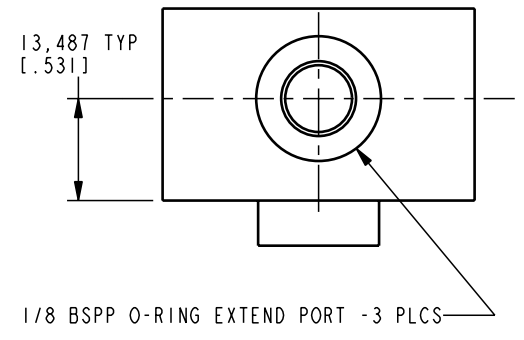


ILCM41531001 REV A ECN 1498



| | | | |
|----------------------------|--|--|--|
| CAD CONTROL DRAWING | | | |
| | | VEKTEK, INC. 1334 E. SIXTH AVE. P.O. BOX 625 EMPORIA, KS. 66801 U.S.A. | |
| | | | |

| | | | | | | | |
|---------|------------------------|--|------------|----------|-------------------------|-----------|---------------------|
| A | 1498 | RELEASE | K. ROEMER | 05-10-06 | 41531001 | G | EDGE CLAMP, 9 KN |
| REV | IN ACCORDANCE WITH ECN | EFFECTIVE DATE | REVISED BY | DATE | REFERENCE MODEL | REF REV | '''' |
| DRW BY: | KR | DRAWING STATUS: Released | | | TOLERANCES DO NOT APPLY | UNITS | SIZE |
| DATE: | 05-10-06 | PRODUCTION APPROVED FOR RELEASED STATUS ONLY | | | DIMENSIONS ARE NOMINAL | mm [inch] | B |
| | | | | | ILCM41531001 | REV | A |
| | | | | | | | FORM FEG036, Rev. A |