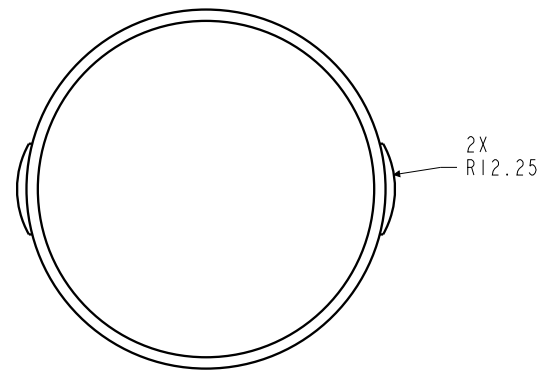
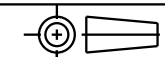


I LCM41582170 REV. A ECN4112



**CAD CONTROL
DRAWING**



VEKTEK, INC.
1334 E. SIXTH AVE. P.O. BOX 625
EMPORIA, KS. 66801 U.S.A.

A	4112	RELEASE	JDW	02/21/20	41582170	A	CENTER CLAMP, MINI, 2PT, 48-52MM		
REV	IN ACCORDANCE WITH ECN	EFFECTIVE DATE	REVISED BY	DATE	REFERENCE MODEL	REF REV			
DRW BY:	JDW	DRAWING STATUS: Released			TOLERANCES DO NOT APPLY	UNITS	SIZE	I LCM41582170	REV A
DATE:	02/21/20	PRODUCTION APPROVED FOR RELEASED STATUS ONLY			DIMENSIONS ARE NOMINAL	mm [inch]	B		

FORM FEG036, Rev. C

SHEET 1 OF 1