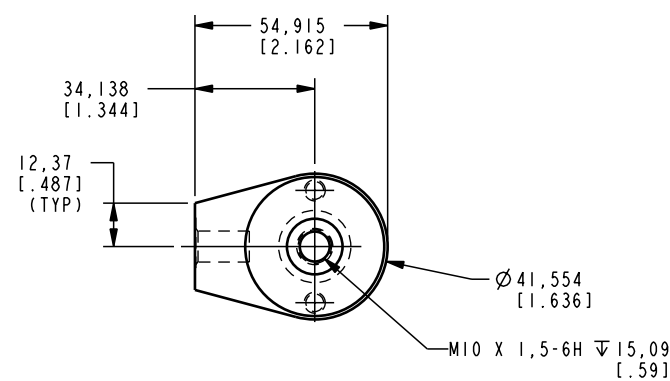
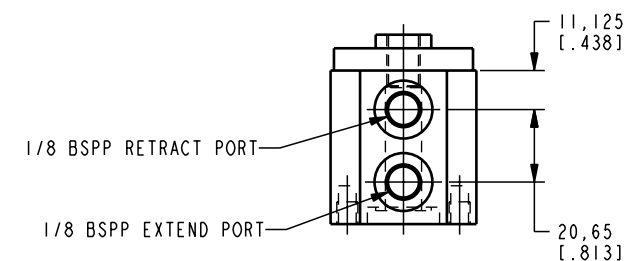
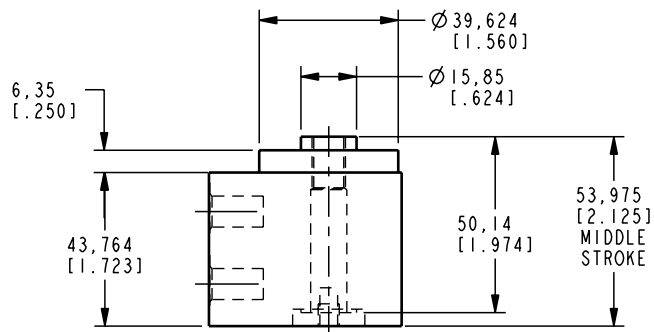
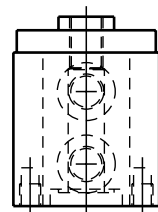


I LCM42022000 REV A ECN 1504



CAD CONTROL DRAWING



VEKTEK, INC.
1334 E. SIXTH AVE. P.O. BOX 625
EMPORIA, KS. 66801 U.S.A.

A	1504	RELEASE	K. ROEMER	05-26-06	42021000	G	CYL, HR, 20.6 KN, DA
REV	IN ACCORDANCE WITH ECN	EFFECTIVE DATE	REVISED BY	DATE	REFERENCE MODEL	REF REV	''''
DRW BY:	DRAWING STATUS: Released				TOLERANCES DO NOT APPLY	UNITS	SIZE
DATE:	PRODUCTION APPROVED FOR RELEASED STATUS ONLY				DIMENSIONS ARE NOMINAL	mm [inch]	D I LCM42022000

FORM FEG036, Rev. B

SHEET 1 OF 1