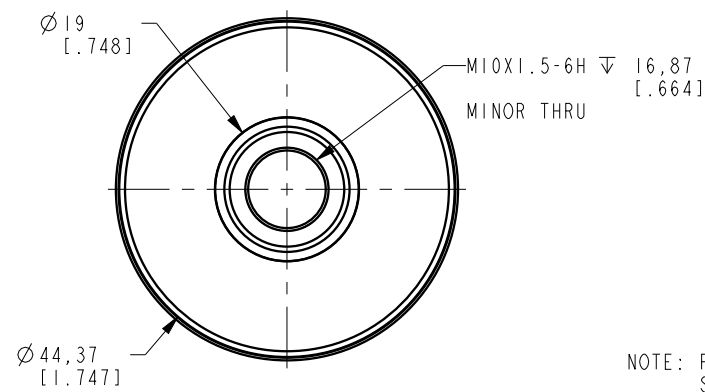
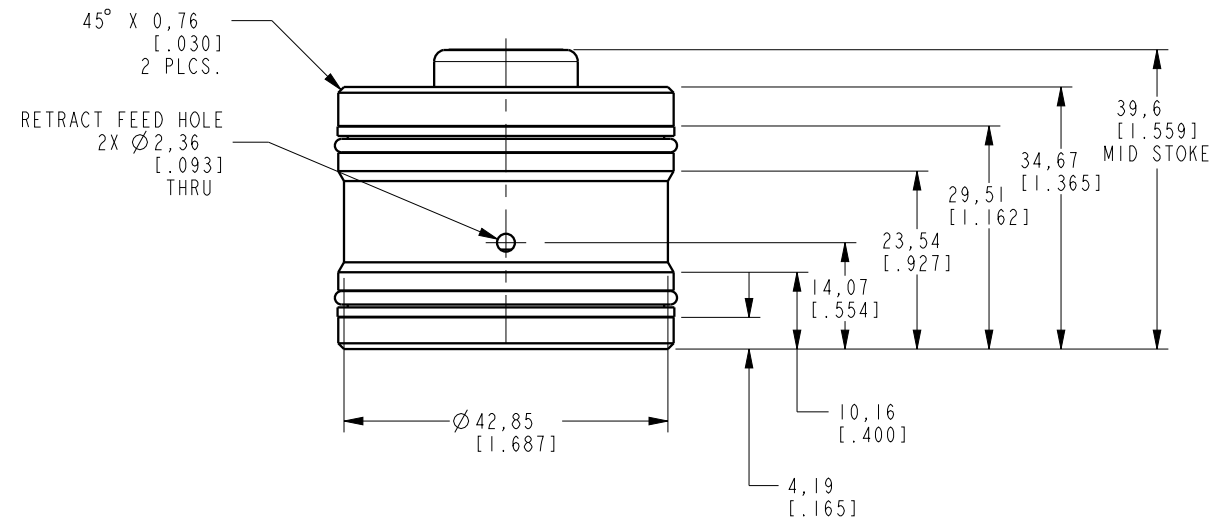


I LCM42114300 REV A ECN 3136



NOTE: RETURN SPRING INCLUDED WITH CYLINDER.
SPRING OMITTED FOR CLARITY

**CAD CONTROL
DRAWING**



VEKTEK, INC.
1334 E. SIXTH AVE. P.O. BOX 625
EMPORIA, KS. 66801 U.S.A.

A	3136	RELEASE	DKC	11/9/16
REV	IN ACCORDANCE WITH ECN	EFFECTIVE DATE	REVISED BY	DATE
DRW BY:	DKC	DRAWING STATUS: Released		
DATE:	11/1/16	PRODUCTION APPROVED FOR RELEASED STATUS ONLY		

42114300	A	CYL, CM, PULL, 23.1kN
REFERENCE MODEL	REF REV	M10X1.5 THREAD
TOLERANCES DO NOT APPLY DIMENSIONS ARE NOMINAL	UNITS mm [inch]	SIZE B
I LCM42114300	REV A	

FORM FEG036, Rev. C

SHEET 1 OF 1