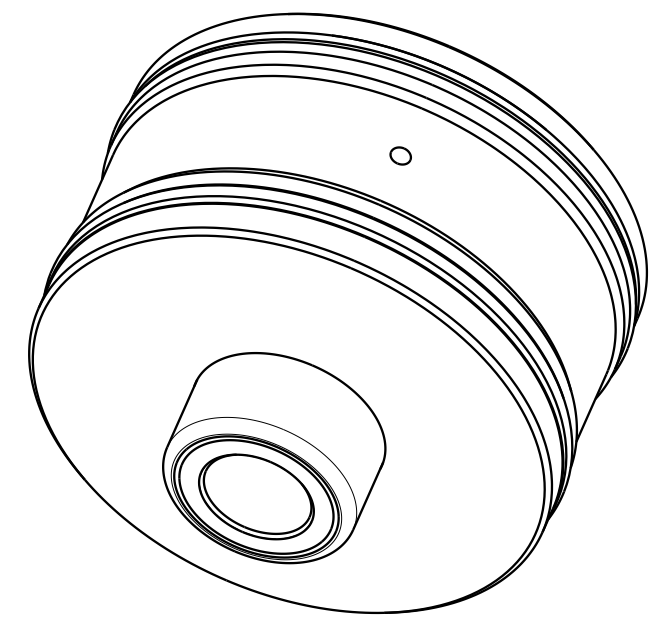


Ø60,32 [2.375] ∇3.66 [0.144]
AT MIDSTROKE

Ø6,4 [0.252] ∇7,95 [0.313]
IN PLUNGER

Ø39,88 [1.570]
HOLE CIRCLE

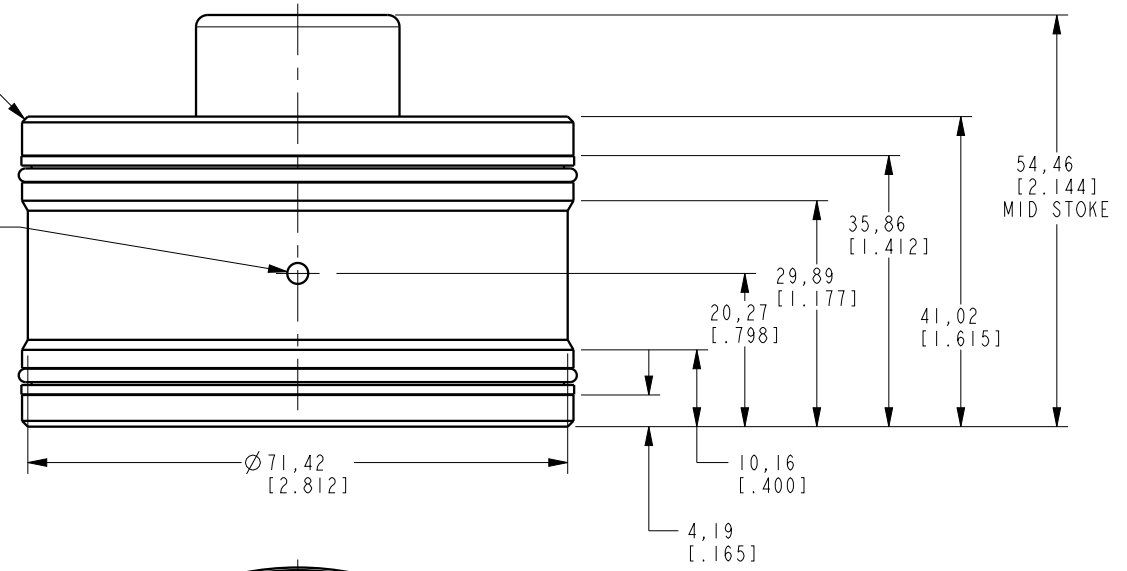
Ø19,81 [0.780]
∇30,94 [1.218]
IN PLUNGER



ILCM42115100 REV A ECN 3136

45° X 0,76 [0.030]
2 PLCS.

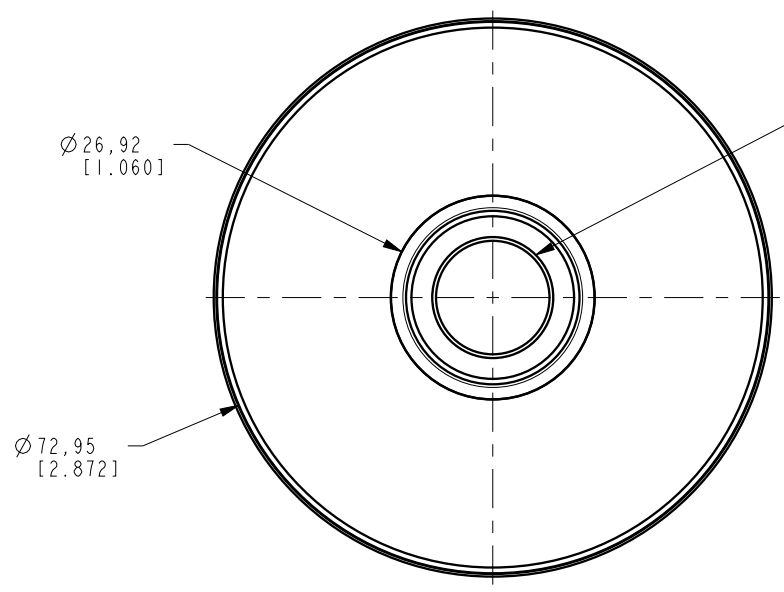
RETRACT FEED HOLE
2X Ø2,77 [0.109]
THRU



Ø26,92 [1.060]

M16X2.0-6H ∇19,86 [0.782]
MINOR THRU

Ø72,95 [2.872]



NOTE: RETURN SPRING INCLUDED WITH CYLINDER.
SPRING OMITTED FOR CLARITY

CAD CONTROL
DRAWING



A	3136	RELEASE	DKC	11/9/16	42115100	A	CYL, CM, PULL, 76.1kN
REV	IN ACCORDANCE WITH ECN	EFFECTIVE DATE	REVISED BY	DATE	REFERENCE MODEL	REF REV	M16X2 THREAD
DRW BY:	DKC	DRAWING STATUS: Released			TOLERANCES DO NOT APPLY	UNITS	SIZE
DATE:	11/1/16	PRODUCTION APPROVED FOR RELEASED STATUS ONLY			DIMENSIONS ARE NOMINAL	mm [inch]	B

SIZE	B	ILCM42115100	REV	A
------	---	--------------	-----	---

FORM FEG036, Rev. C