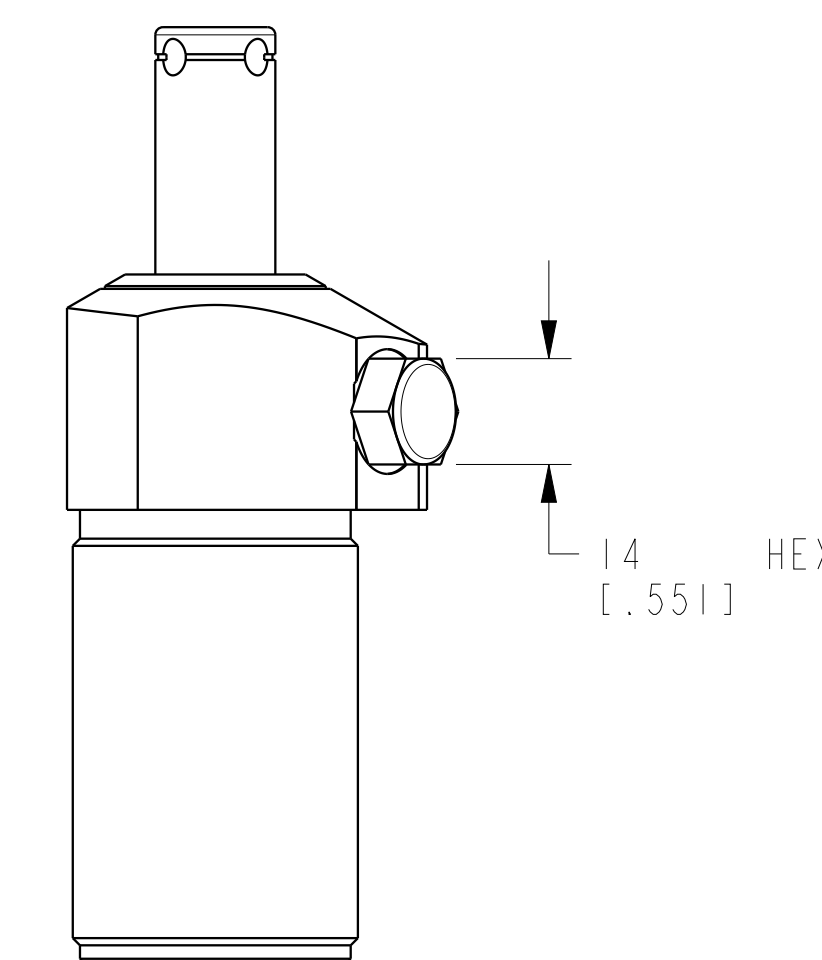
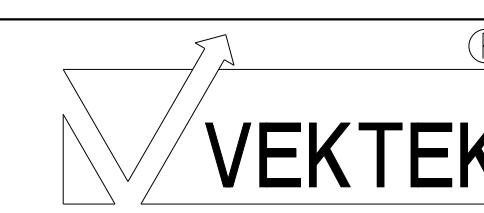


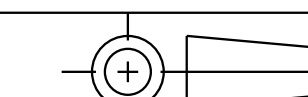
I LCM42501091 REV C ECN 3531



CAD CONTROL DRAWING



VEKTEK, INC.  
1334 E. SIXTH AVE. P.O. BOX 625  
EMPORIA, KS. 66801 U.S.A.



|         |                        |  |            |          |                         |           |                           |
|---------|------------------------|--|------------|----------|-------------------------|-----------|---------------------------|
| C       | 3531                   | RELEASE                                      | NPETERS    | 07/23/18 | 42501091                | D         | CYL, PULL, TB, 6.2 KN, SA |
| REV     | IN ACCORDANCE WITH ECN | EFFECTIVE DATE                               | REVISED BY | DATE     | REFERENCE MODEL         | REF REV   | ****                      |
| DRW BY: | K. ROEMER              | DRAWING STATUS: <b>Released</b>              |            |          | TOLERANCES DO NOT APPLY | UNITS     | SIZE                      |
| DATE:   | 03-27-06               | PRODUCTION APPROVED FOR RELEASED STATUS ONLY |            |          | DIMENSIONS ARE NOMINAL  | mm (inch) | D                         |
|         |                        |  |            |          | I LCM42501091           | REV       | C                         |