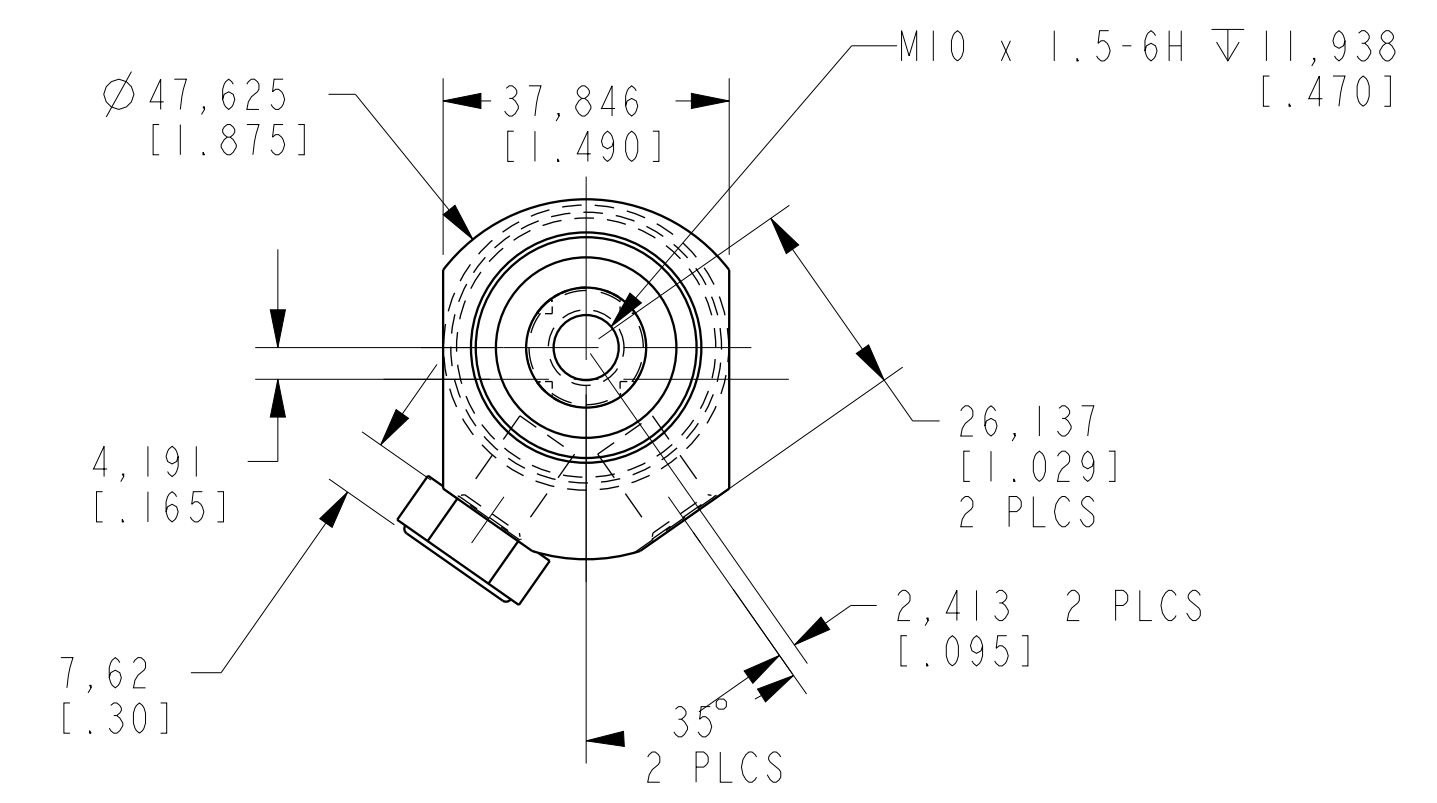


I LCM42501800 REV C ECN 3600



CAD CONTROL DRAWING	 VEKTEK, INC. 1334 E. SIXTH AVE. P.O. BOX 625 EMPORIA, KS. 66801 U.S.A.	

C	3600	RELEASE	NPETERS	10/8/18
REV	IN ACCORDANCE WITH ECN	EFFECTIVE DATE	REVISED BY	DATE
DRW BY:	DRAWING STATUS: Released		TOLERANCES DO NOT APPLY UNITS	
DATE:	PRODUCTION APPROVED FOR RELEASED STATUS ONLY		DIMENSIONS ARE NOMINAL	

GENERIC_SC.TB	G	SC, CYL, TB
REFERENCE MODEL	REF REV	****
SIZE	D	I LCM42501800
REV	C	