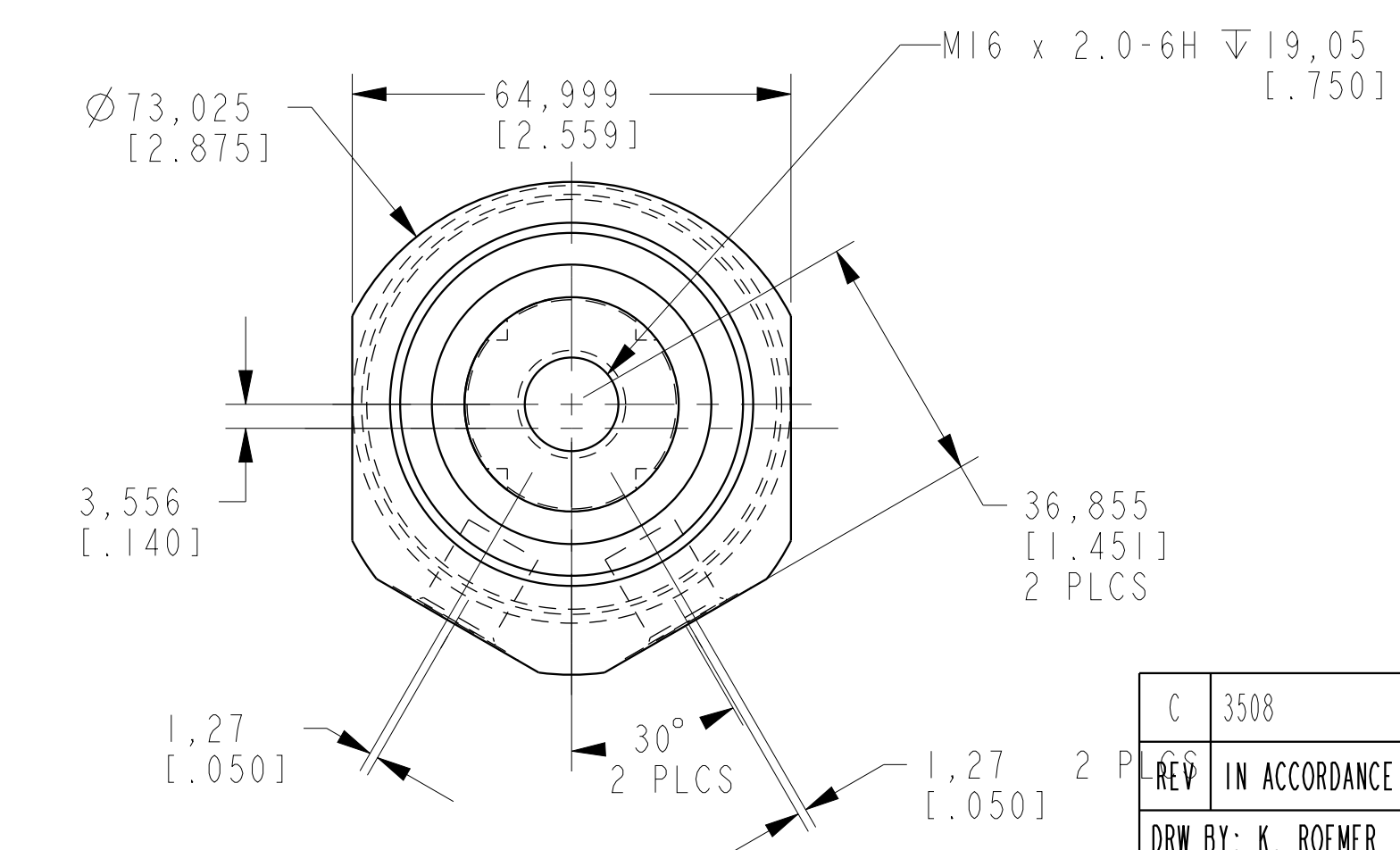


ILCM42502800 REV C ECN 3508



<b>CAD CONTROL DRAWING</b>																																
		VEKTEK, INC. 1334 E. SIXTH AVE. P.O. BOX 625 EMPORIA, KS. 66801 U.S.A.																														
<table border="1"> <tr> <td>C</td> <td>3508</td> <td>RELEASE</td> <td>ATHOMSEN</td> <td>26-OCT-2018</td> </tr> <tr> <td>REV</td> <td>IN ACCORDANCE WITH ECN</td> <td>EFFECTIVE DATE</td> <td>REVISED BY</td> <td>DATE</td> </tr> <tr> <td>DRW BY:</td> <td colspan="2">DRAWING STATUS: <b>Released</b></td> <td>TOLERANCES DO NOT APPLY</td> <td>UNITS</td> </tr> <tr> <td>DATE:</td> <td colspan="2">PRODUCTION APPROVED FOR RELEASED STATUS ONLY</td> <td>DIMENSIONS ARE NOMINAL</td> <td>mm (inch)</td> </tr> </table>	C	3508	RELEASE	ATHOMSEN	26-OCT-2018	REV	IN ACCORDANCE WITH ECN	EFFECTIVE DATE	REVISED BY	DATE	DRW BY:	DRAWING STATUS: <b>Released</b>		TOLERANCES DO NOT APPLY	UNITS	DATE:	PRODUCTION APPROVED FOR RELEASED STATUS ONLY		DIMENSIONS ARE NOMINAL	mm (inch)	<table border="1"> <tr> <td>42502800</td> <td>B</td> <td>CYL, PP, TB, 53.3 KN/24.9 KN, DA</td> </tr> <tr> <td>REFERENCE MODEL</td> <td>REF REV</td> <td>SIZE</td> </tr> <tr> <td></td> <td></td> <td>D</td> </tr> </table>	42502800	B	CYL, PP, TB, 53.3 KN/24.9 KN, DA	REFERENCE MODEL	REF REV	SIZE			D	<table border="1"> <tr> <td>FORM FEG036, Rev. C</td> </tr> </table>	FORM FEG036, Rev. C
C	3508	RELEASE	ATHOMSEN	26-OCT-2018																												
REV	IN ACCORDANCE WITH ECN	EFFECTIVE DATE	REVISED BY	DATE																												
DRW BY:	DRAWING STATUS: <b>Released</b>		TOLERANCES DO NOT APPLY	UNITS																												
DATE:	PRODUCTION APPROVED FOR RELEASED STATUS ONLY		DIMENSIONS ARE NOMINAL	mm (inch)																												
42502800	B	CYL, PP, TB, 53.3 KN/24.9 KN, DA																														
REFERENCE MODEL	REF REV	SIZE																														
		D																														
FORM FEG036, Rev. C																																