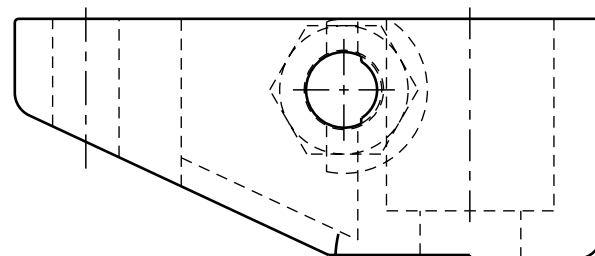
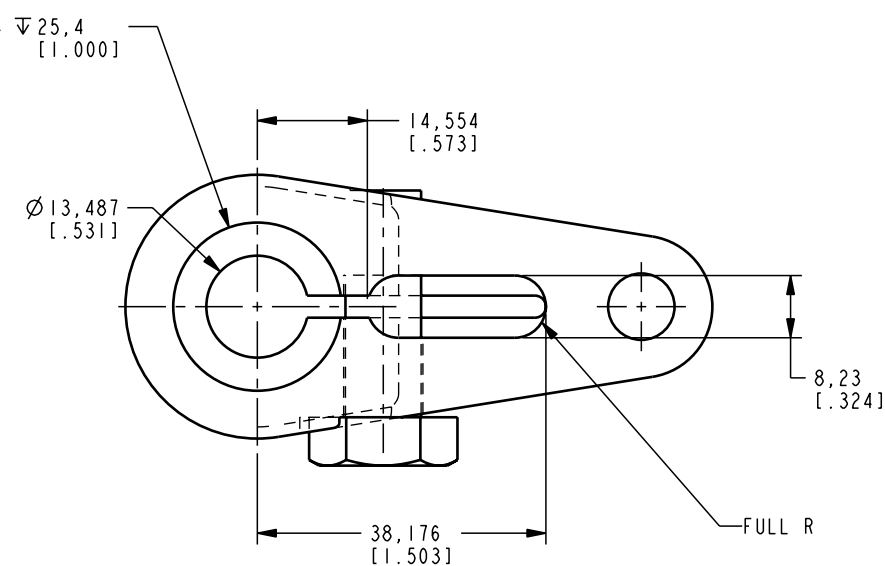
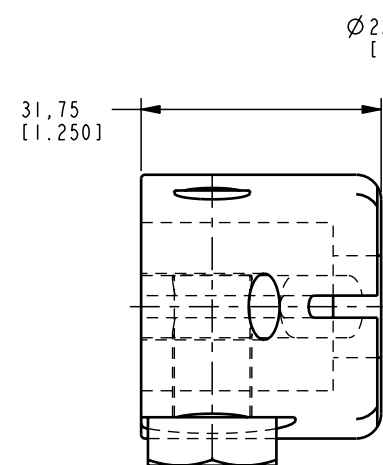
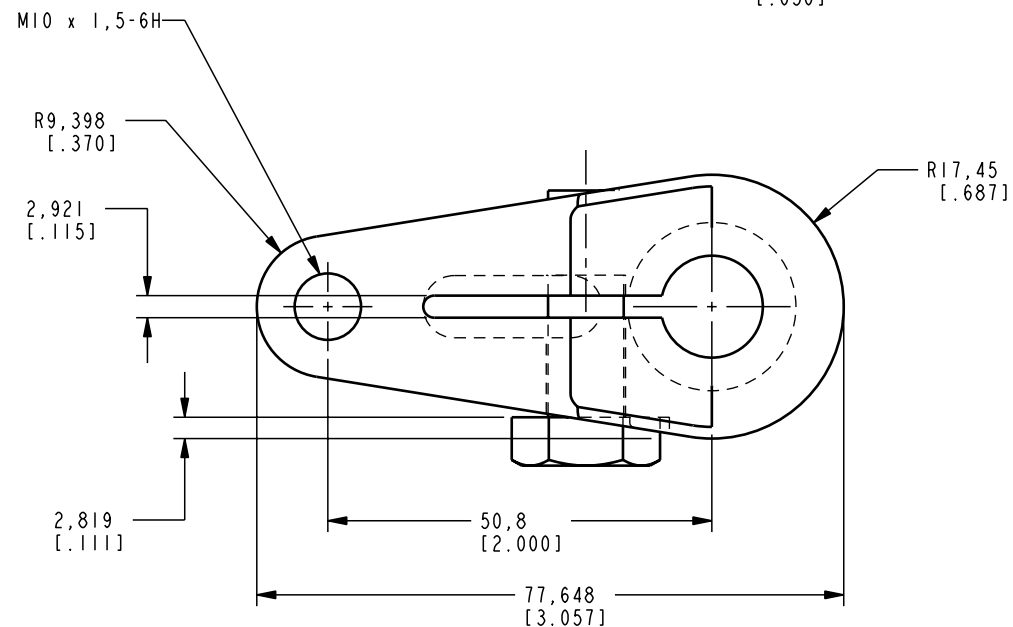


ILCM44102200 REV A ECN 1457



CAD CONTROL DRAWING



VEKTEK, INC.  
1334 E. SIXTH AVE. P.O. BOX 625  
EMPORIA, KS. 66801 U.S.A.

REV	A	1457	RELEASE	K. ROEMER	04-11-06	44102200	F	ARM, SC, 11.6 KN, SHORT
REV	IN ACCORDANCE WITH ECN		EFFECTIVE DATE	REVISED BY	DATE	REFERENCE MODEL	REF REV	''''''
DRW BY:	K. ROEMER		DRAWING STATUS: <b>Released</b>			TOLERANCES DO NOT APPLY	UNITS	SIZE
DATE:	04-11-06		PRODUCTION APPROVED FOR RELEASED STATUS ONLY			DIMENSIONS ARE NOMINAL	mm [inch]	B
							ILCM44102200	REV A

FORM FEG036, Rev. A

SHEET 1 OF 1