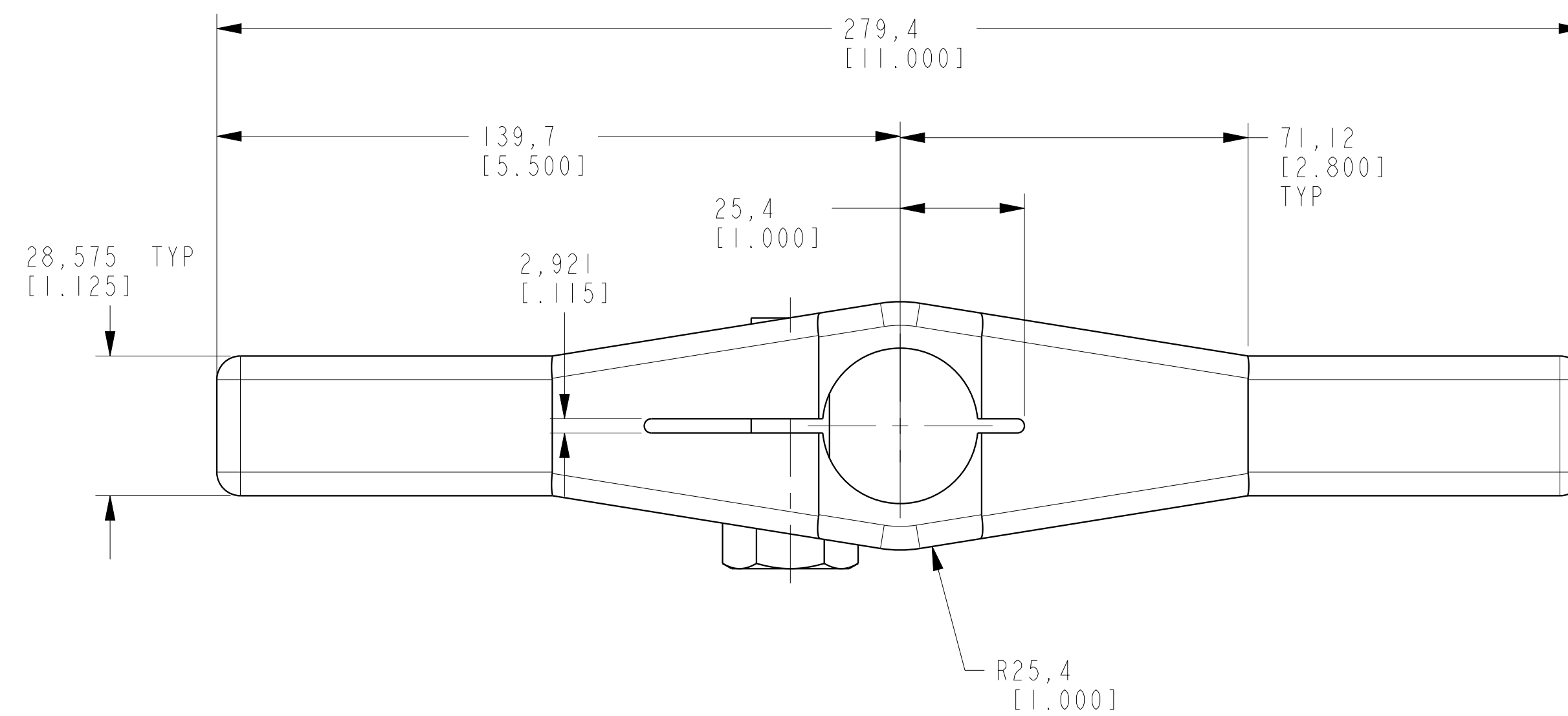
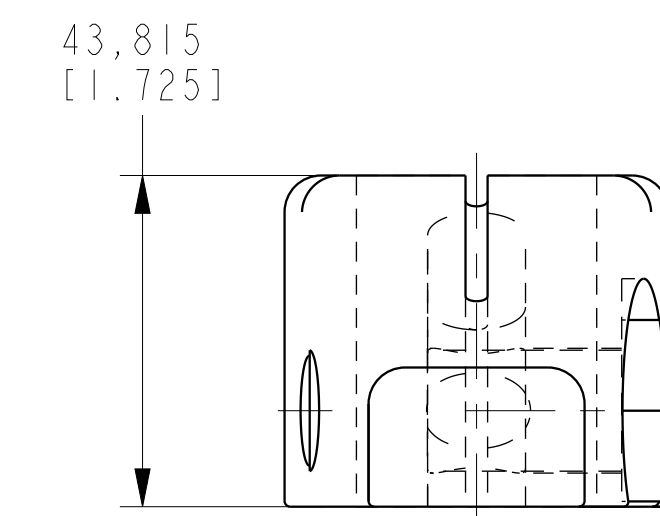
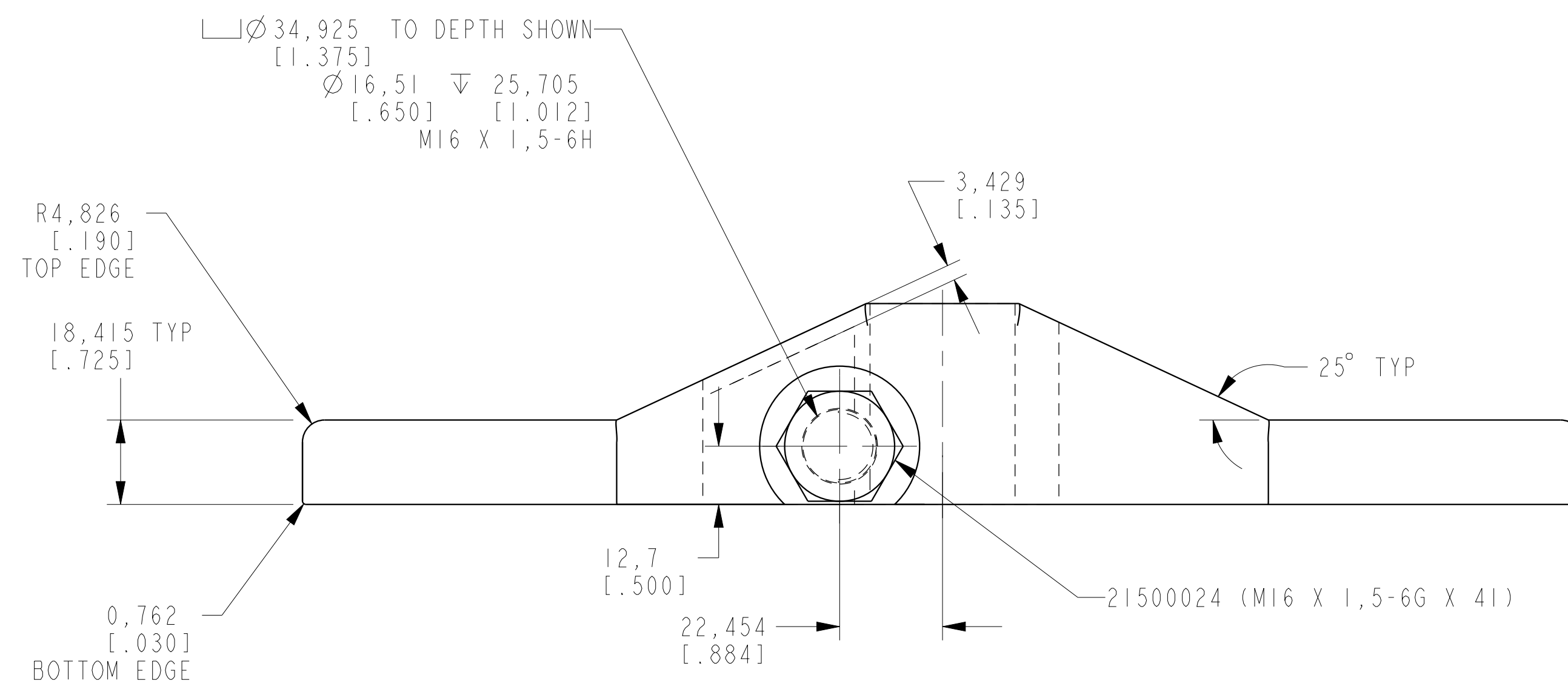
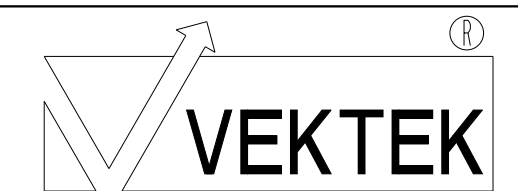


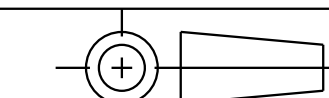
I LCM44123100 REV B ECN 4064



CAD CONTROL
DRAWING



VEKTEK, INC.
1334 E. SIXTH AVE. P.O. BOX 625
EMPORIA, KS. 66801 U.S.A.



B	4064	RELEASE	NPETERS	2/4/20	44123100	E	ARM, SC, 22 KN, LP, DOUBLE			
REV	IN ACCORDANCE WITH ECN	EFFECTIVE DATE	REVISED BY	DATE	REFERENCE MODEL	REF REV	***			
DRW BY:	K. ROEMER	DRAWING STATUS: Released				TOLERANCES DO NOT APPLY	UNITS	SIZE	I LCM44123100	REV
DATE:	04-11-06	PRODUCTION APPROVED FOR RELEASED STATUS ONLY				DIMENSIONS ARE NOMINAL	mm (inch)	D		B