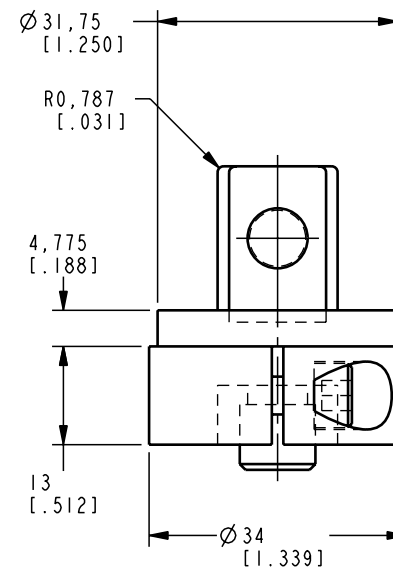
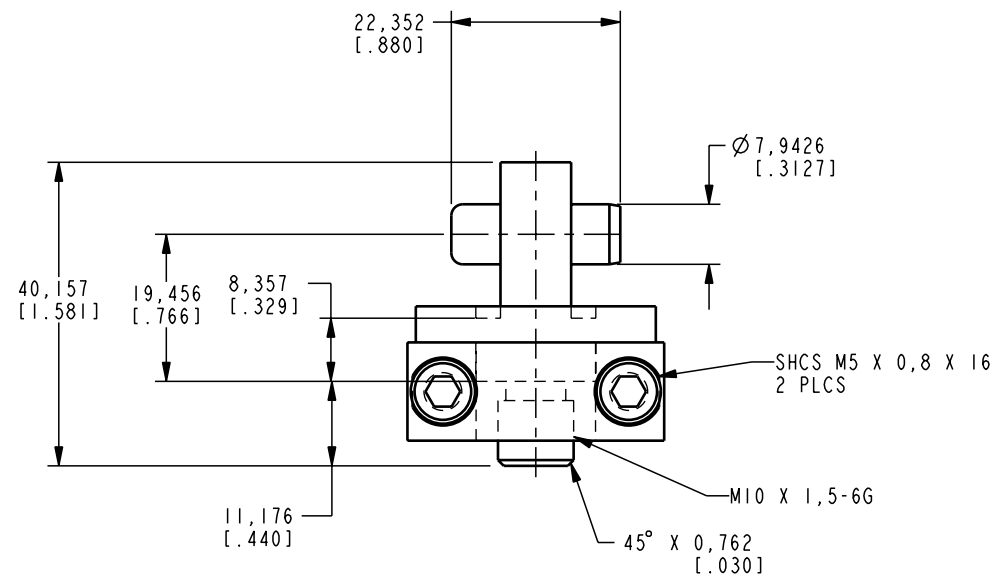


ILCM44520909 REV A ECN 1457



**CAD CONTROL
DRAWING**



VEKTEK, INC.
1334 E. SIXTH AVE. P.O. BOX 625
EMPORIA, KS. 66801 U.S.A.



REV	A	1457	RELEASE	K. ROEMER	04-11-06	44520909	A	ATTACHMENT, ARM, ROCKER, 4.9 KN			
REV	IN ACCORDANCE WITH ECN		EFFECTIVE DATE	REVISED BY	DATE	REFERENCE MODEL	REF REV	*****			
DRW BY:	K. ROEMER		DRAWING STATUS: Released			TOLERANCES DO NOT APPLY	UNITS	SIZE	ILCM44520909	REV A	
DATE:	04-11-06		PRODUCTION APPROVED FOR RELEASED STATUS ONLY			DIMENSIONS ARE NOMINAL	mm [inch]	B			

FORM FEG036, Rev. A

SHEET 1 OF 1