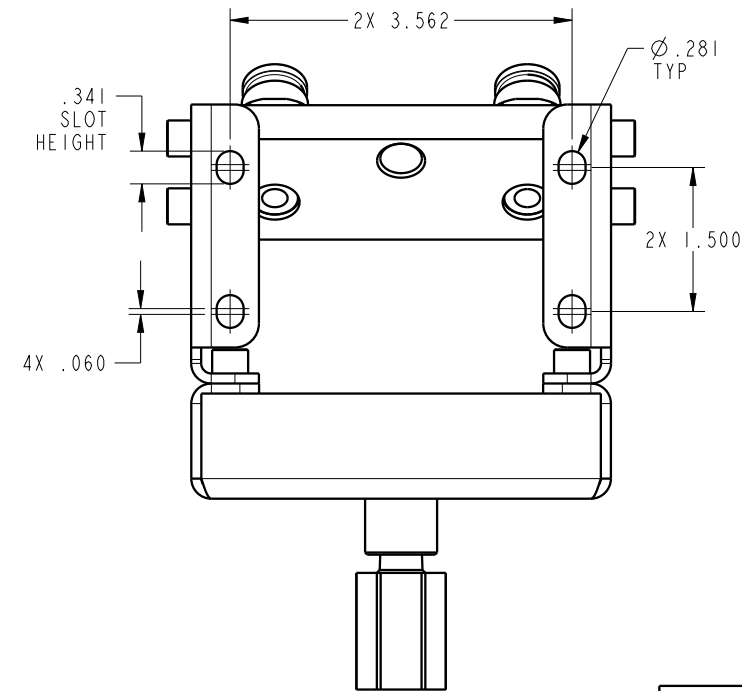
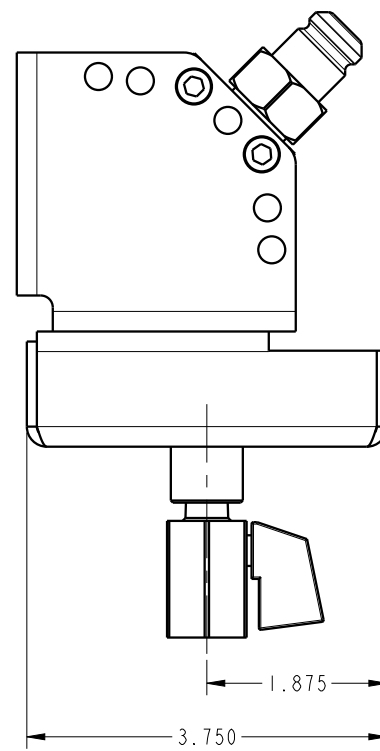
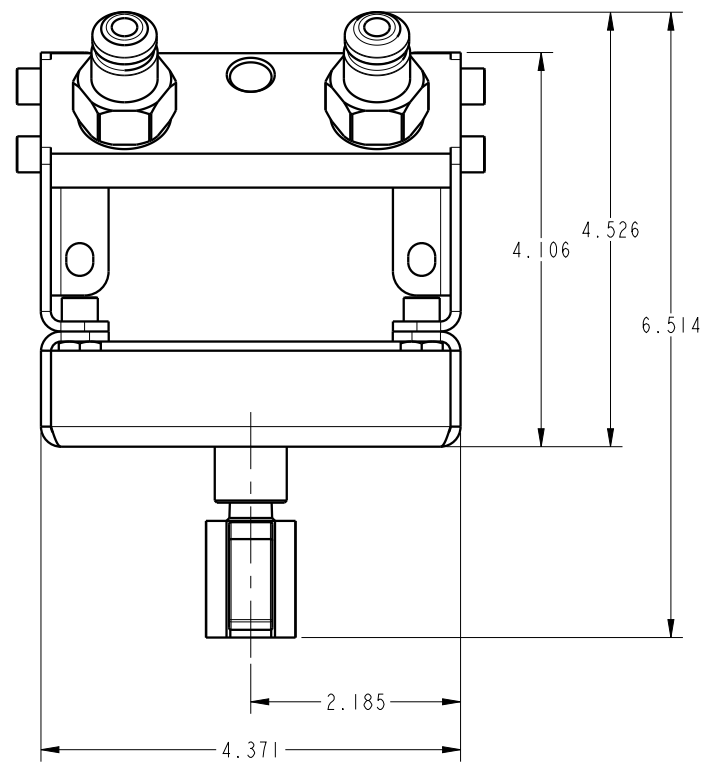


I LCM45600528 REV A ECN 3191



CAD CONTROL
DRAWING



VEKTEK, INC.
1334 E. SIXTH AVE. P.O. BOX 625
EMPORIA, KS. 66801 U.S.A.

A	3191	RELEASE	MAJ	3/29/17	45600528	A	ASSY, DOCKING STATION, W/O PROX, 2H	
REV	IN ACCORDANCE WITH ECN	EFFECTIVE DATE	REVISED BY	DATE	REFERENCE MODEL	REF REV	*****	
DRW BY:	MAJ	DRAWING STATUS: Released			TOLERANCES DO NOT APPLY	UNITS	SIZE	
DATE:	3/29/17	PRODUCTION APPROVED FOR RELEASED STATUS ONLY			DIMENSIONS ARE NOMINAL	mm [inch]	B	
							I LCM45600528	REV A

FORM FEG036, Rev. C

SHEET 1 OF 1