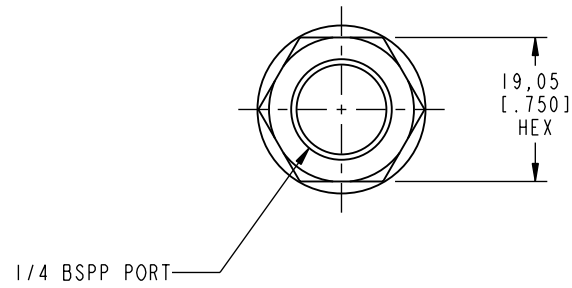
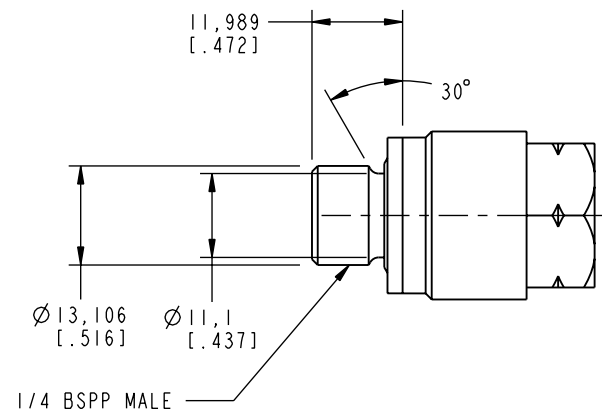


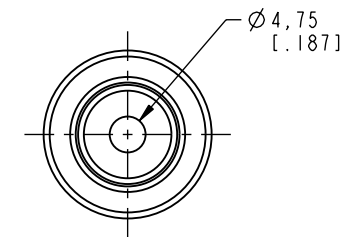
ILCM47004880 REV A ECN2219



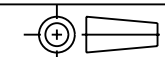
1/4 BSPP PORT



1/4 BSPP MALE



**CAD CONTROL
DRAWING**



VEKTEK, INC.
1334 E. SIXTH AVE. P.O. BOX 625
EMPORIA, KS. 66801 U.S.A.

| | | | | | | | |
|---------|------------------------|--|------------|----------|-------------------------|-----------|-----------------------------------|
| A | 2219 | RELEASE | K. ROEMER | 11/24/10 | 47004880 | A | FILTER, IN-LINE, G 1/4, 10 MICRON |
| REV | IN ACCORDANCE WITH ECN | EFFECTIVE DATE | REVISED BY | DATE | REFERENCE MODEL | REF REV | ***** |
| DRW BY: | K. ROEMER | DRAWING STATUS: Released | | | TOLERANCES DO NOT APPLY | UNITS | SIZE |
| DATE: | 08/16/10 | PRODUCTION APPROVED FOR RELEASED STATUS ONLY | | | DIMENSIONS ARE NOMINAL | mm [inch] | B |
| | | | | | ILCM47004880 | REV | A |

FORM FEG036, Rev. A

SHEET 1 OF 1