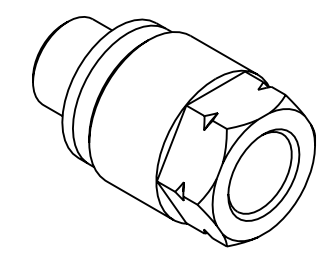
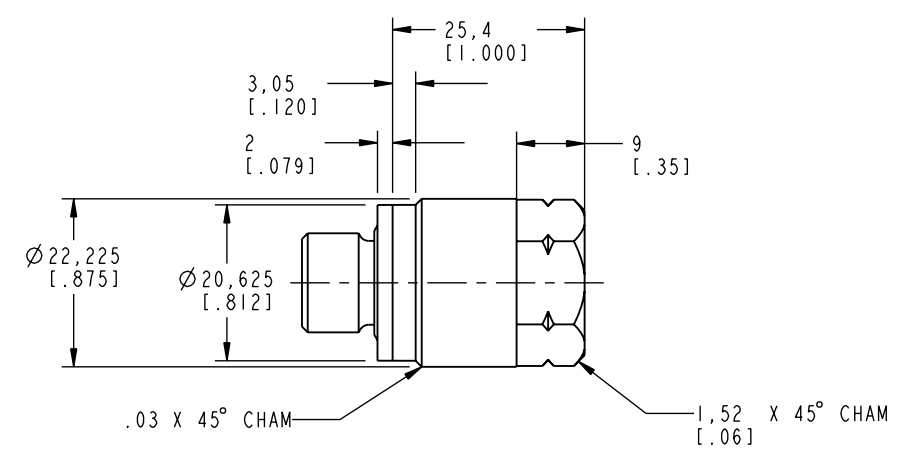


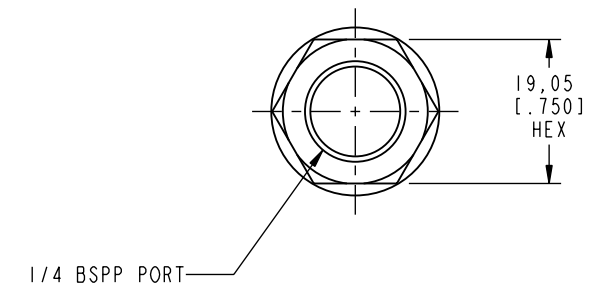
1 2 3 4

D
C
B
A

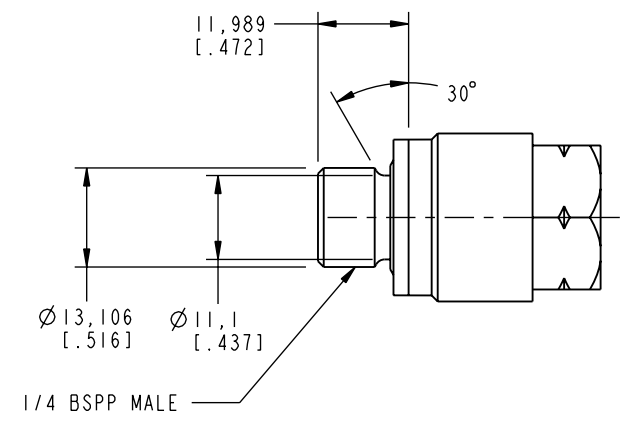
D
C
B
A



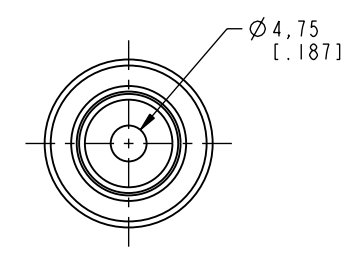
I LCM47004881 REV A ECN2219



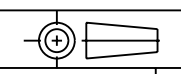
1/4 BSPP PORT



1/4 BSPP MALE



**CAD CONTROL
DRAWING**



VEKTEK, INC.
1334 E. SIXTH AVE. P.O. BOX 625
EMPORIA, KS. 66801 U.S.A.

A	2219	RELEASE	K. ROEMER	11/24/10	47004881	A	FILTER, IN-LINE, G 1/4, 25 MICRON
REV	IN ACCORDANCE WITH ECN	EFFECTIVE DATE	REVISED BY	DATE	REFERENCE MODEL	REF REV	*****
DRW BY:	K. ROEMER	DRAWING STATUS: Released			TOLERANCES DO NOT APPLY	UNITS	SIZE
DATE:	08/16/10	PRODUCTION APPROVED FOR RELEASED STATUS ONLY			DIMENSIONS ARE NOMINAL	mm [inch]	B
					I LCM47004881	REV	A

FORM FEG036, Rev. A

SHEET 1 OF 1