

1

2

3

4

D

D

C

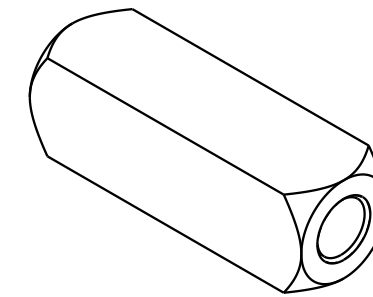
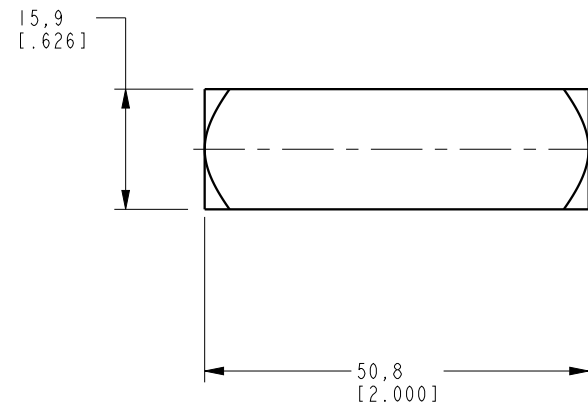
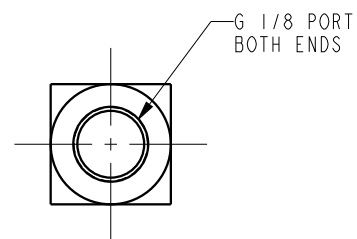
C

B

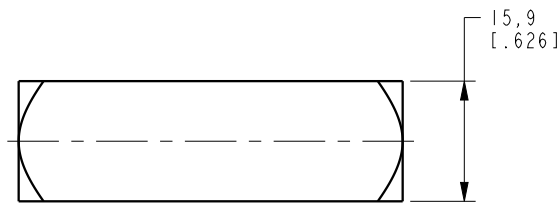
B

A

A



ILCM47034001 REV B ECN 5248



CAD CONTROL DRAWING



VEKTEK, INC.  
 1334 E. SIXTH AVE. P.O. BOX 625  
 EMPORIA, KS. 66801 U.S.A.



|         |                        |  |            |         |                         |           |                     |
|---------|------------------------|--|------------|---------|-------------------------|-----------|---------------------|
| B       | 5248                   | RELEASE                                      | RLK        | 2/19/24 | 47034001                | C         | VALVE, CHECK, G 1/8 |
| REV     | IN ACCORDANCE WITH ECN | EFFECTIVE DATE                               | REVISED BY | DATE    | REFERENCE MODEL         | REF REV   | ''''                |
| DRW BY: | K. ROEMER              | DRAWING STATUS: Released                     |            |         | TOLERANCES DO NOT APPLY | UNITS     | SIZE                |
| DATE:   | 06-13-06               | PRODUCTION APPROVED FOR RELEASED STATUS ONLY |            |         | DIMENSIONS ARE NOMINAL  | mm [inch] | B                   |
|         |                        |  |            |         | ILCM47034001            | REV       | B                   |

FORM FEG036, Rev. C

SHEET 1 OF 1