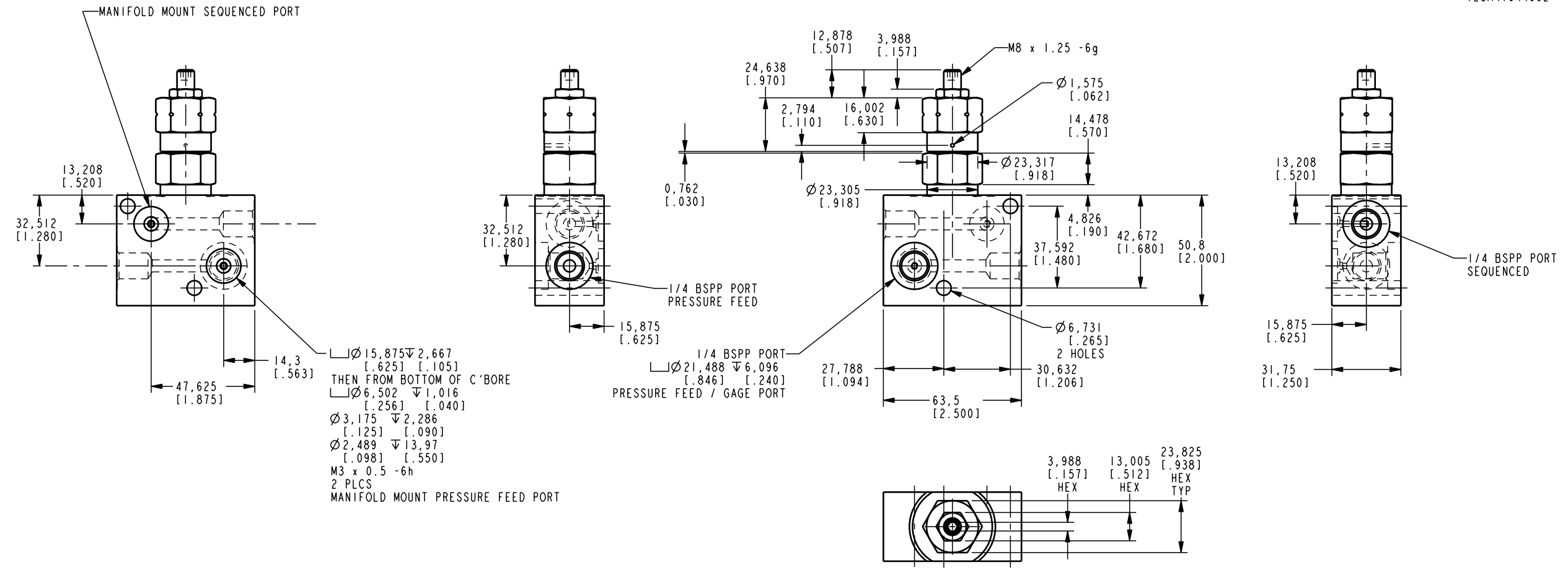


ILCM47044002 REV B ECN 1438



Ø15.875 ∇ 2.667
 [.625] [.105]
 THEN FROM BOTTOM OF C'BORE
 Ø6.502 ∇ 1.016
 [.256] [.040]
 Ø3.175 ∇ 2.286
 [.125] [.090]
 Ø2.489 ∇ 13.97
 [.098] [.550]
 M3 x 0.5 -6h
 2 PLCS
 MANIFOLD MOUNT PRESSURE FEED PORT

1/4 BSPP PORT
 Ø21.488 ∇ 6.096
 [.846] [.240]
 PRESSURE FEED / GAGE PORT

3.988 13.005 23.825
 [.157] [.512] [.938]
 HEX HEX HEX
 TYP

CAD CONTROL DRAWING



VEKTEK, INC.
 1334 E. SIXTH AVE. P.O. BOX 625
 EMPORIA, KS. 66801 U.S.A.

B	1438	RELEASE	K. ROEMER	02-16-06	47044002	D	VALVE, SEQ, MANIFOLD, METRIC
REV	IN ACCORDANCE WITH ECN	EFFECTIVE DATE	REVISED BY	DATE	REFERENCE MODEL	REF REV	''''
DRW BY:	K. ROEMER	DRAWING STATUS: Released			TOLERANCES DO NOT APPLY	UNITS	SIZE
DATE:	11-22-02	PRODUCTION APPROVED FOR RELEASED STATUS ONLY			DIMENSIONS ARE NOMINAL	mm [inch]	D
						I L C M 4 7 0 4 4 0 0 2	REV B

FORM FEG036, Rev. B