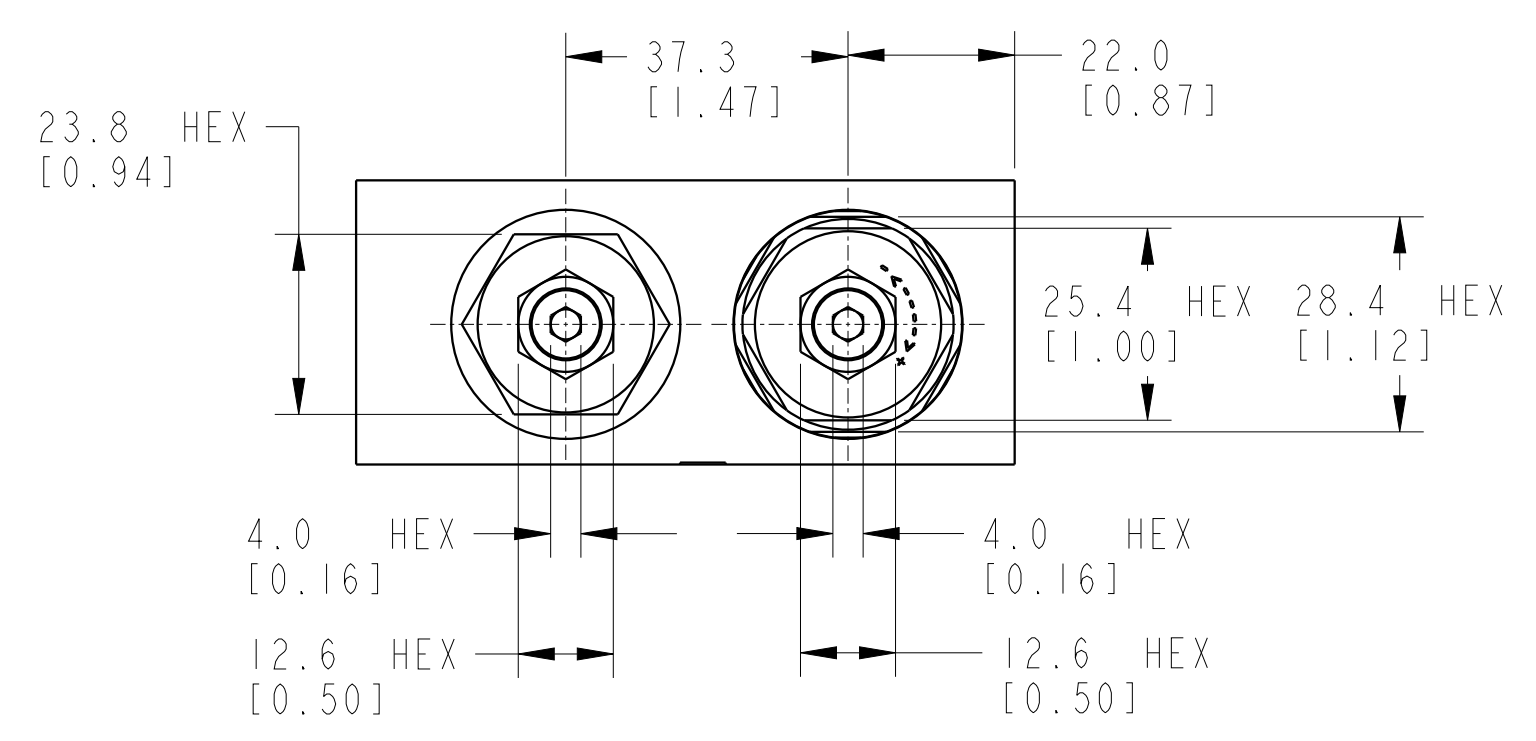


ILCM47094000 REV B ECN 4534

\*M8 PORTS are counterbored for o-rings that are used in manifold mounting applications.



**CAD CONTROL DRAWING**



B	4534	RELEASE	ALS	10/5/21	47094000	B	VLV, SEQ-PRV, METRIC
REV	IN ACCORDANCE WITH ECN	EFFECTIVE DATE	REVISED BY	DATE	REFERENCE MODEL	REF REV	*****
DRW BY:	DLG	DRAWING STATUS: Released			TOLERANCES DO NOT APPLY	UNITS	SIZE
DATE:	6/9/14	PRODUCTION APPROVED FOR RELEASED STATUS ONLY			DIMENSIONS ARE NOMINAL	mm (inch)	D
							ILCM47094000
							FORM FEG036, Rev. C