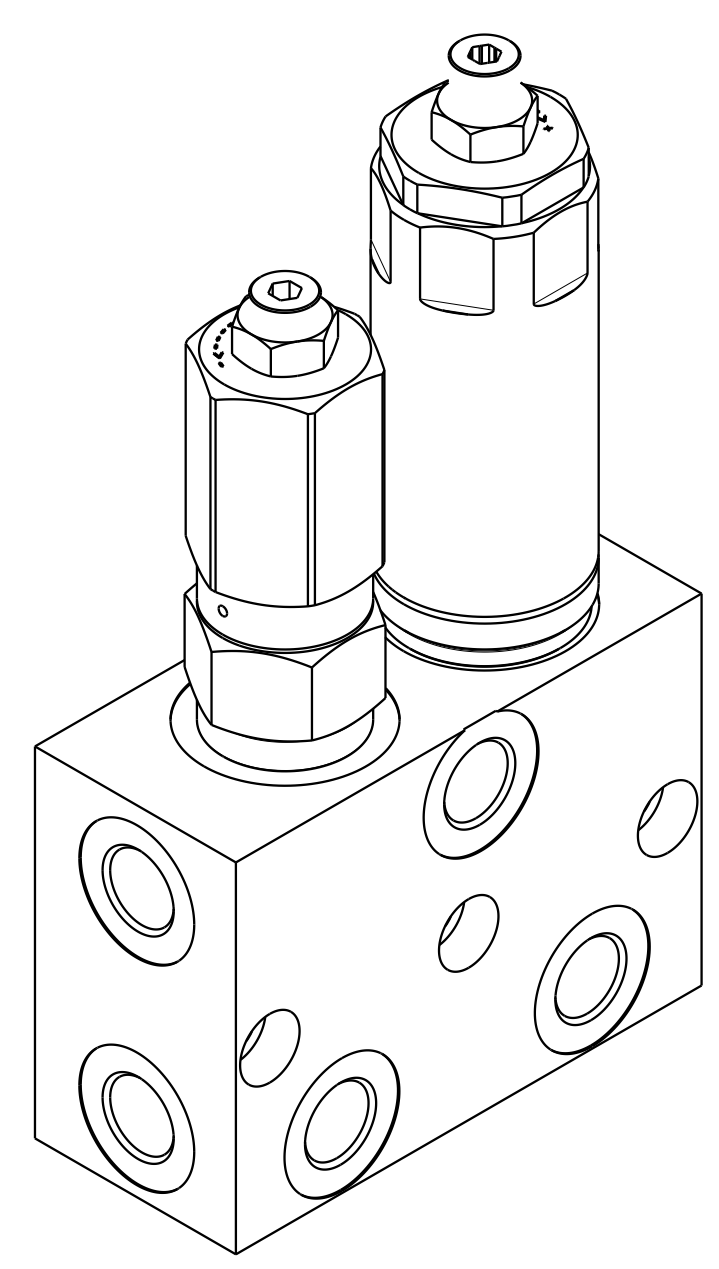
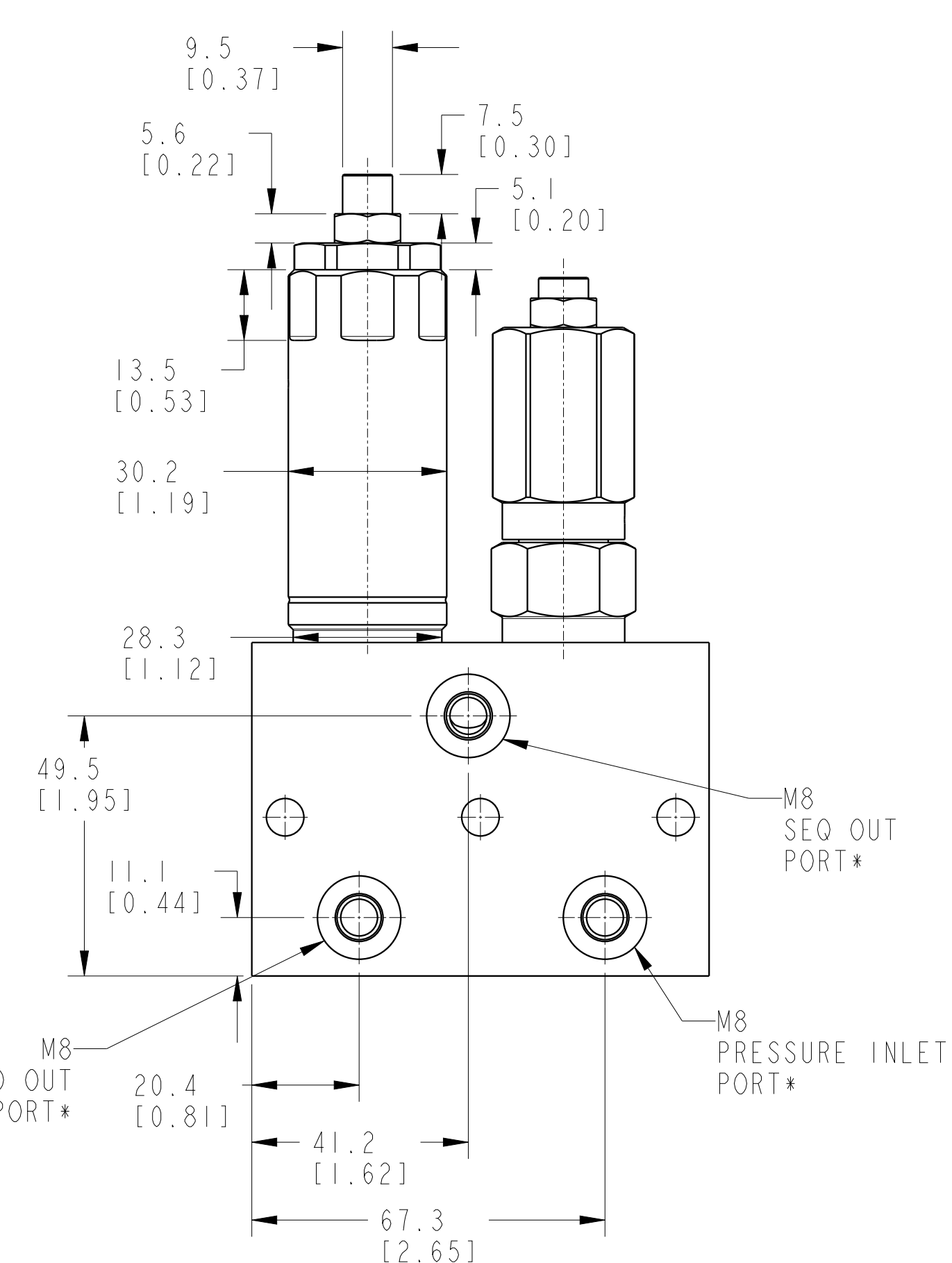
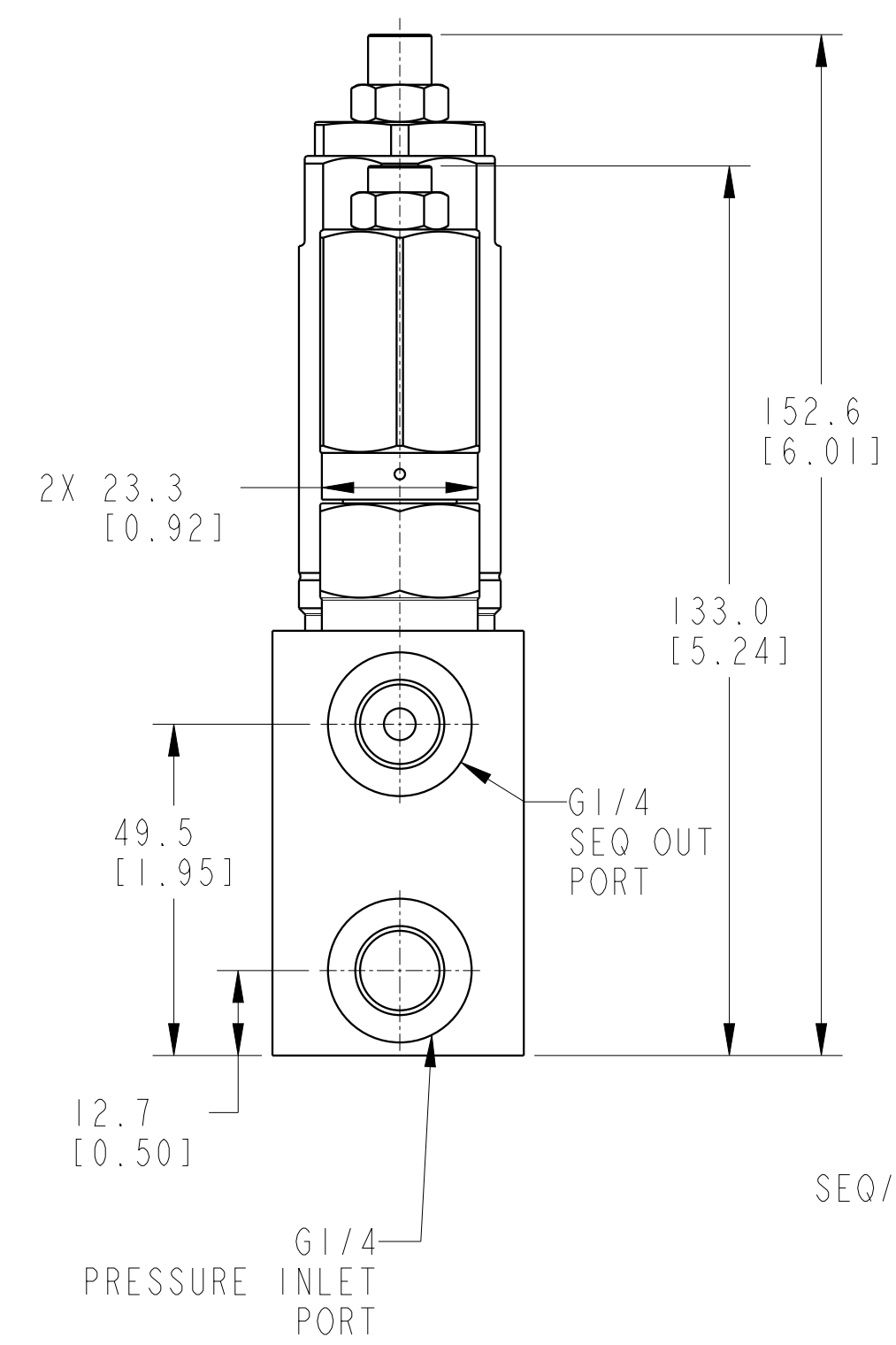
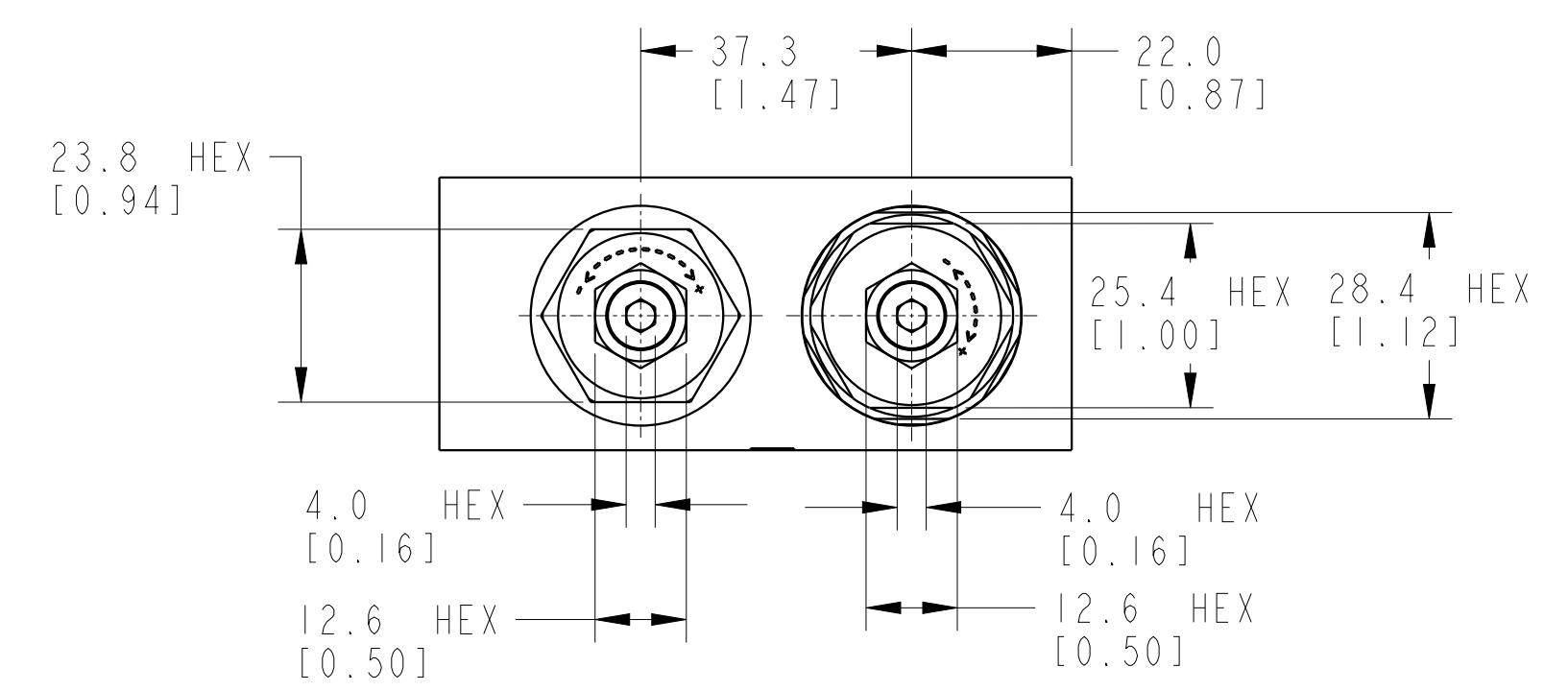
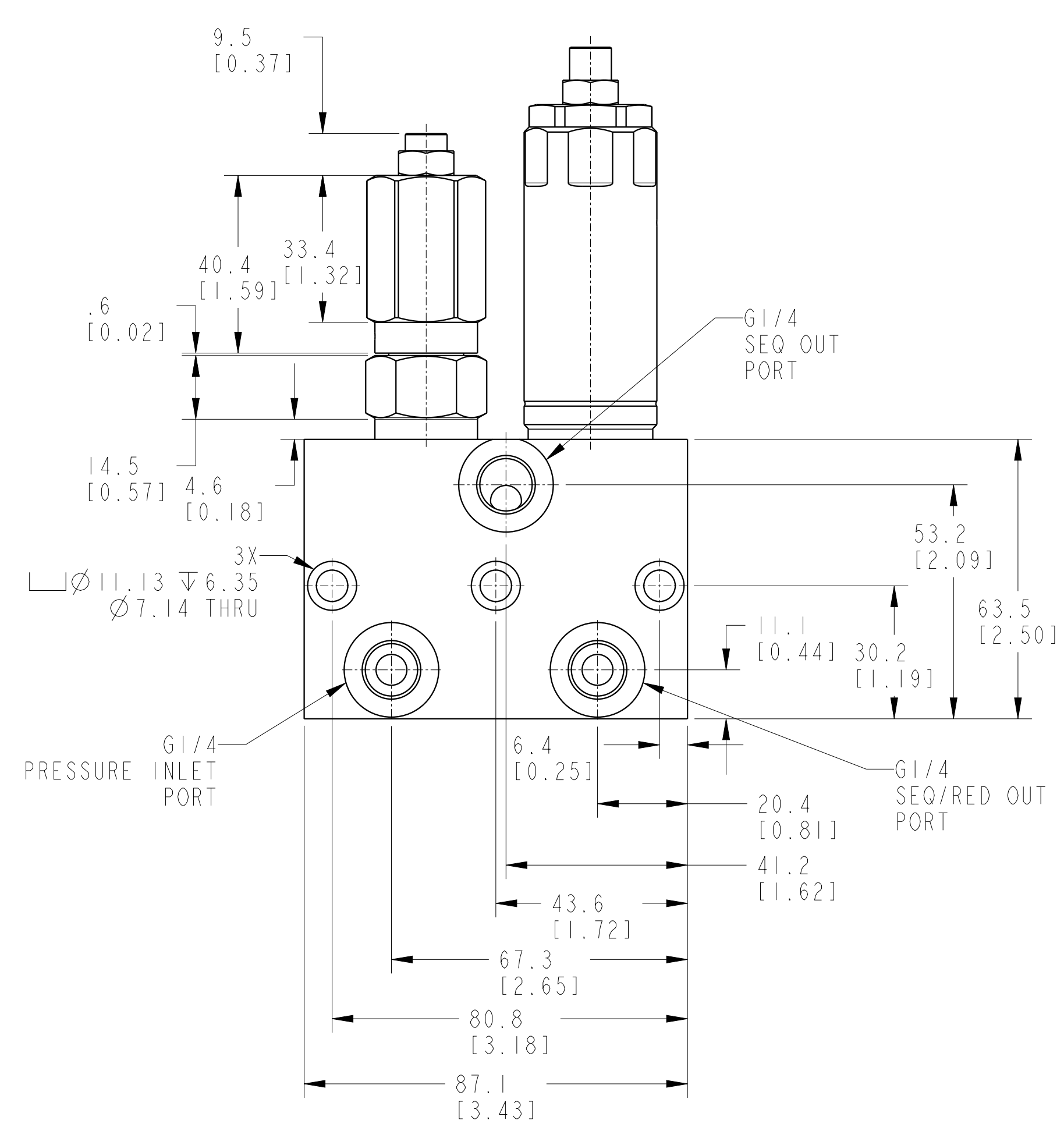
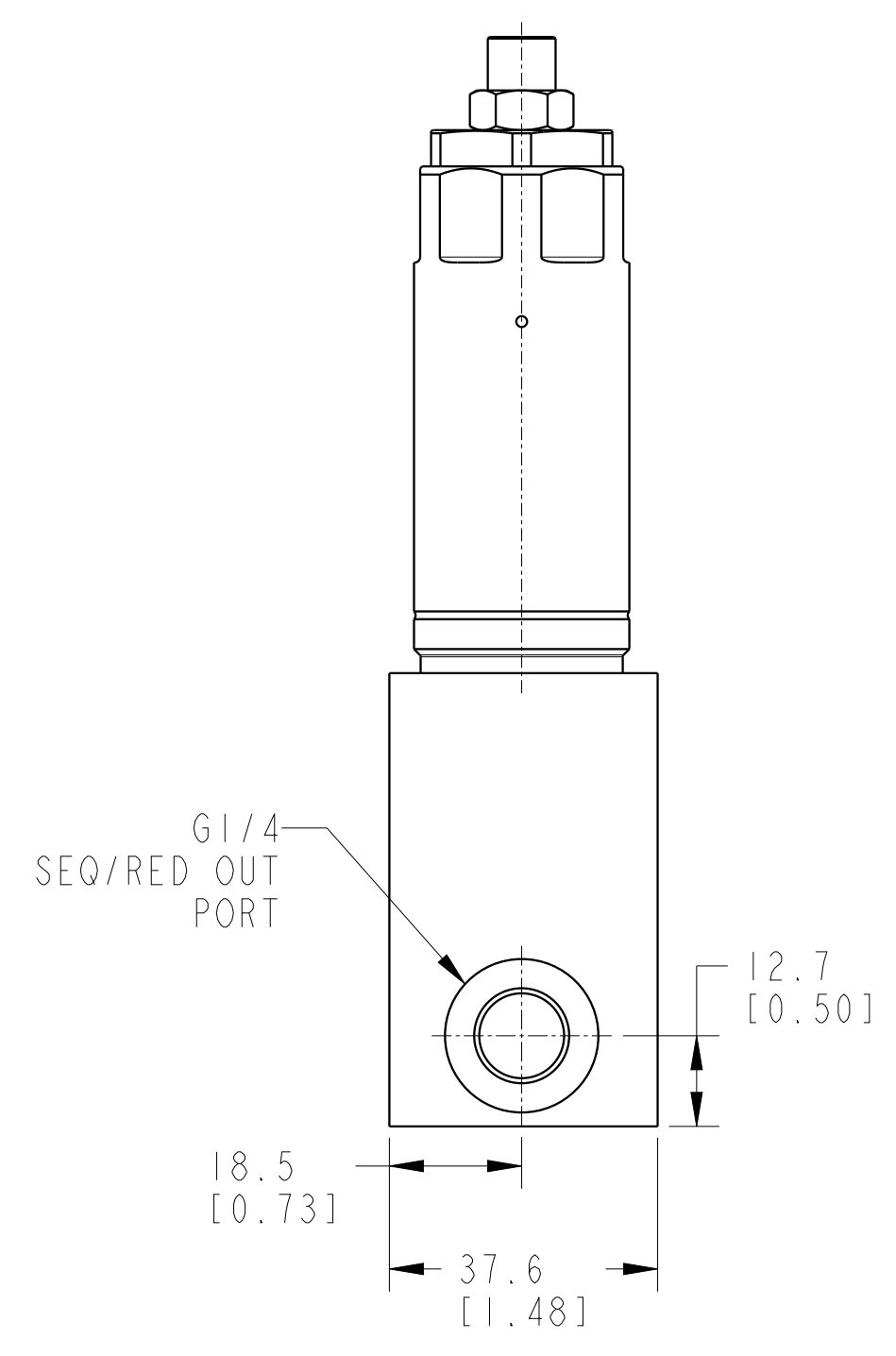


1

2

3

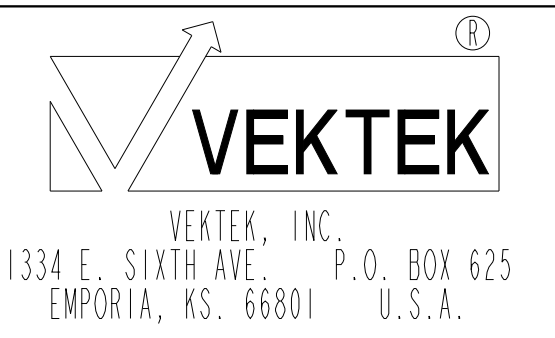
4



I LCM47094002 REV B ECN 4534

*M8 PORTS are counterbored for o-rings that are used in manifold mounting applications.

CAD CONTROL DRAWING



B	4534	RELEASE	ALS	10/5/21	47094002	C	VLV, LP SEQ-PRV, METRIC
REV	IN ACCORDANCE WITH ECN	EFFECTIVE DATE	REVISED BY	DATE	REFERENCE MODEL	REF REV	*****
DRW BY:	DLG	DRAWING STATUS: Released			TOLERANCES DO NOT APPLY	UNITS	SIZE
DATE:	6/9/14	PRODUCTION APPROVED FOR RELEASED STATUS ONLY			DIMENSIONS ARE NOMINAL	mm (inch)	D
					I LCM47094002	REV	B

1

2

3

4

SHEET 1 OF 1