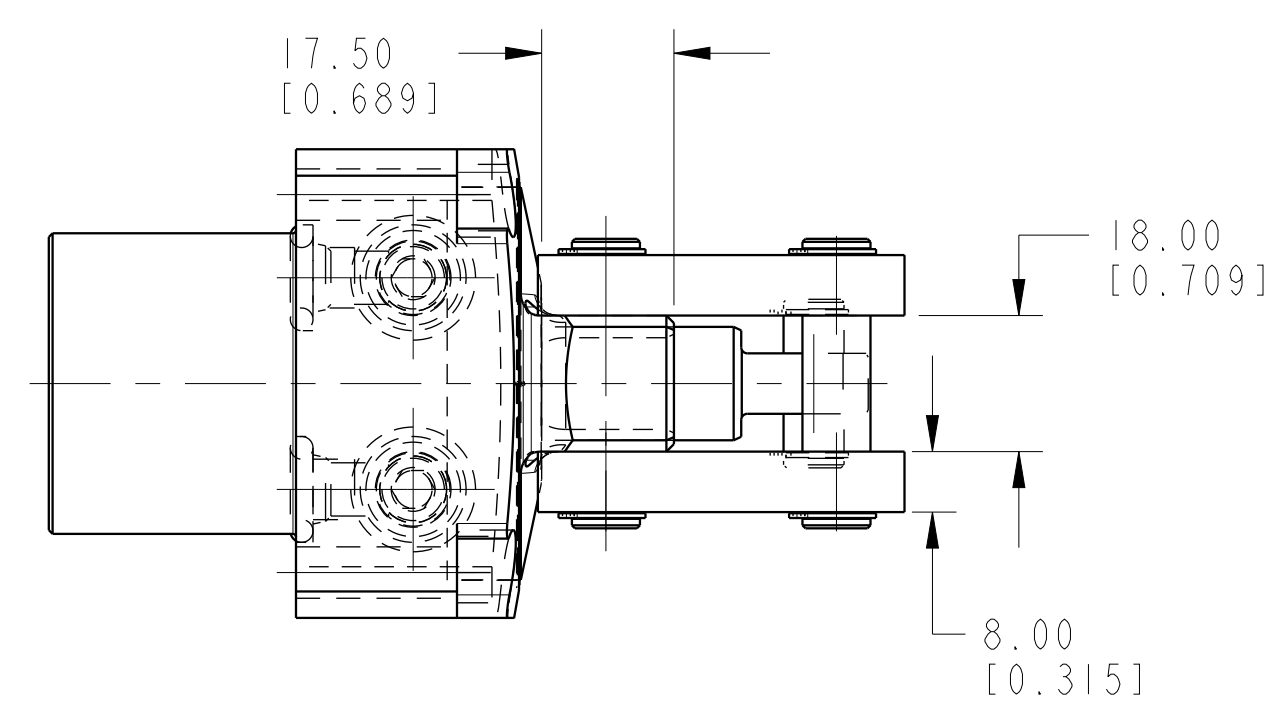
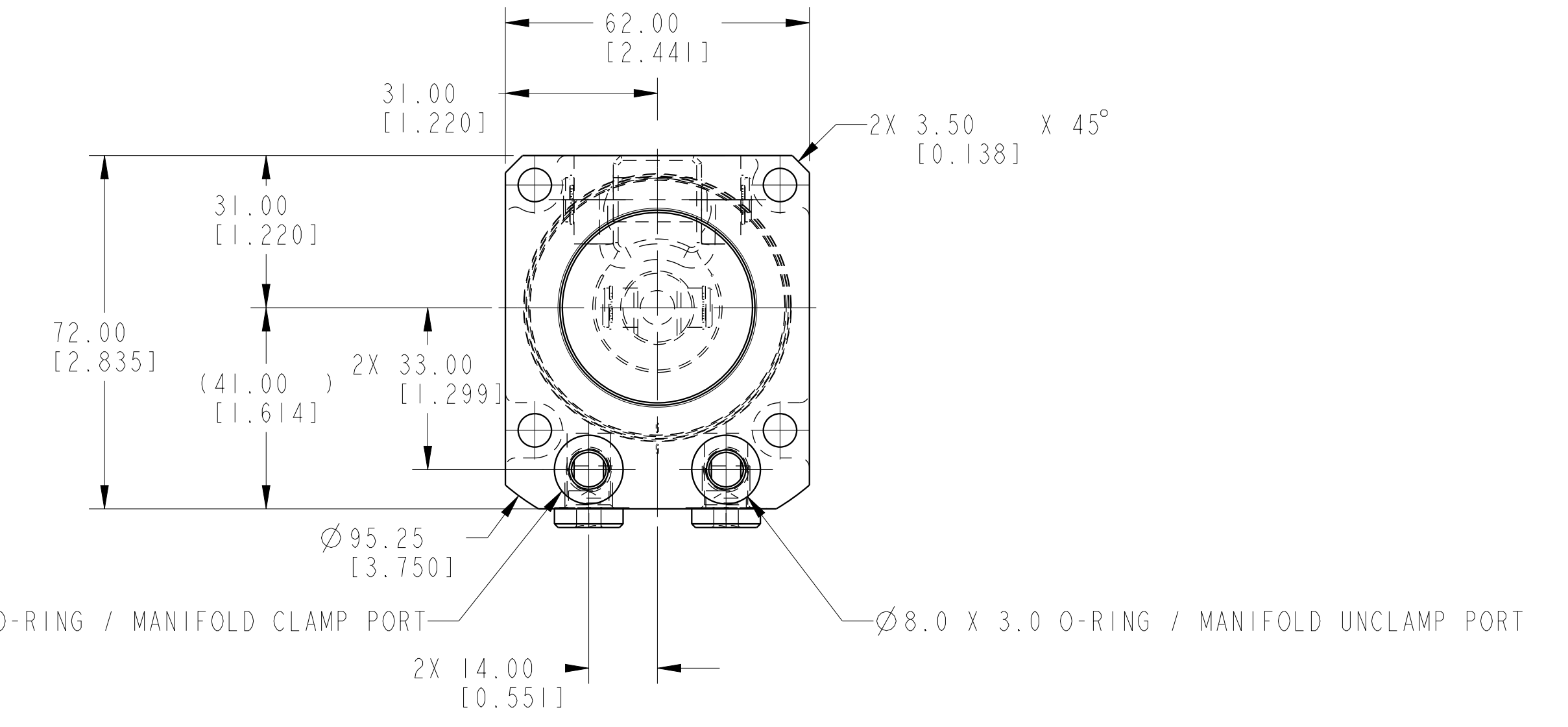
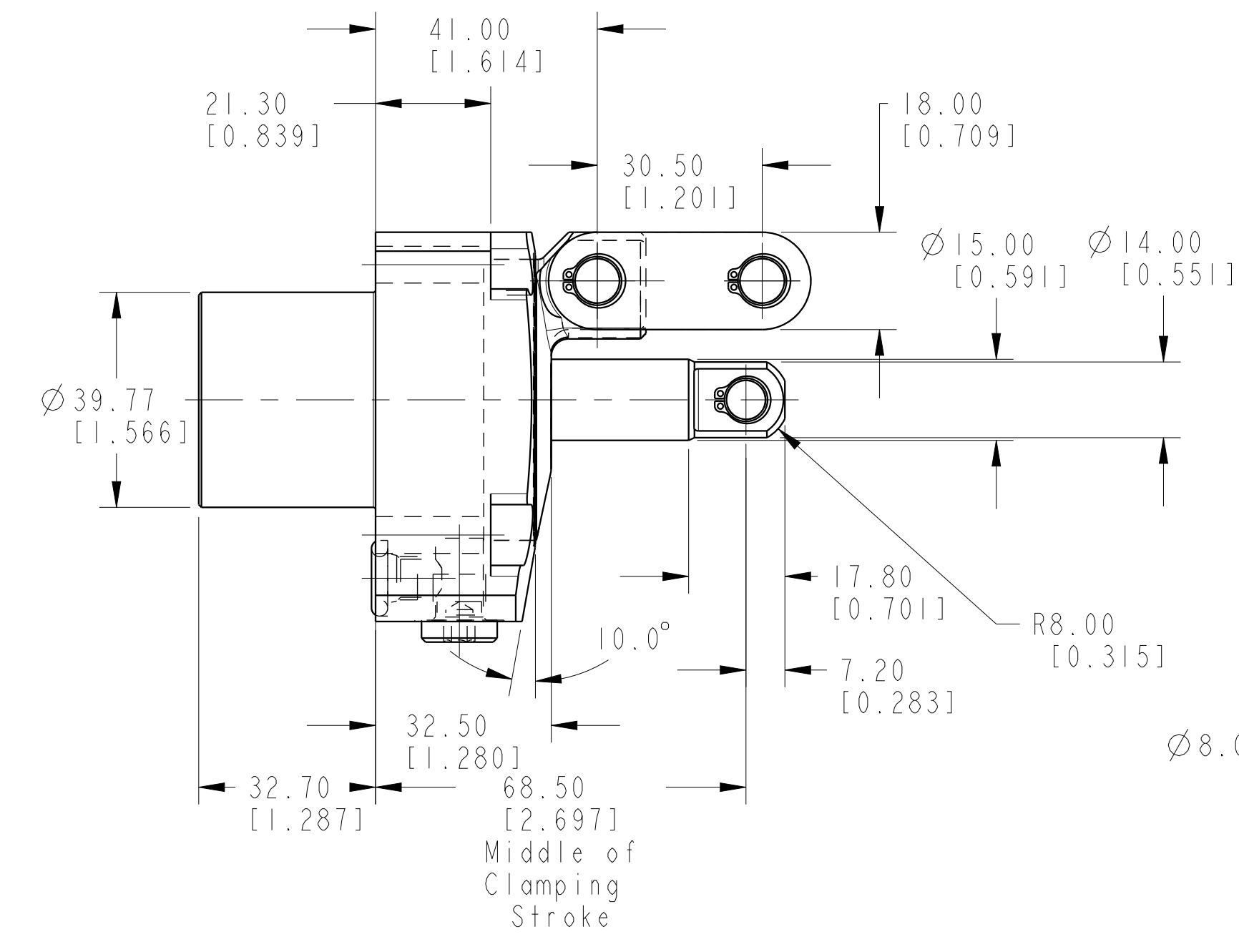
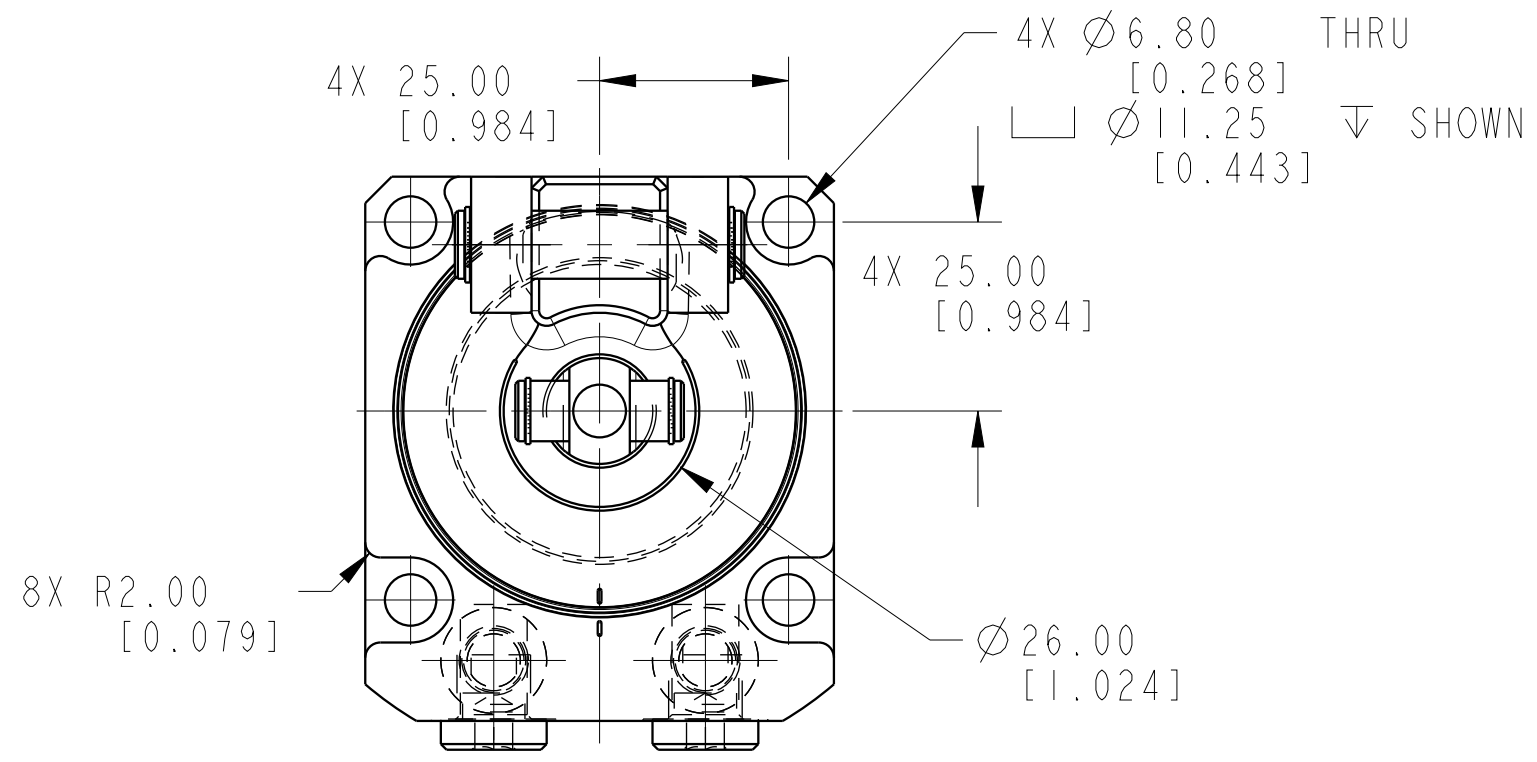


ILCMV41621800 REV A ECN 3076



CAD CONTROL DRAWING

VEKTEK, INC.
1334 E. SIXTH AVE. P.O. BOX 625
EMPORIA, KS. 66801 U.S.A.

| | | | | | | | |
|---------|------------------------|--|------------|----------|-------------------------|-----------|-----------------------|
| A | 3076 | RELEASE | BCD | 08-22-16 | 41621800 | A | LC, TL360, DA, 6.22kN |
| REV | IN ACCORDANCE WITH ECN | EFFECTIVE DATE | REVISED BY | DATE | REFERENCE MODEL | REF REV | |
| DRW BY: | BCD | DRAWING STATUS: Released | | | TOLERANCES DO NOT APPLY | UNITS | SIZE |
| DATE: | 8-25-16 | PRODUCTION APPROVED FOR RELEASED STATUS ONLY | | | DIMENSIONS ARE NOMINAL | mm (inch) | D |
| | | | | | | | ILCMV41621800 |
| | | | | | | | FORM FEG036, Rev. C |