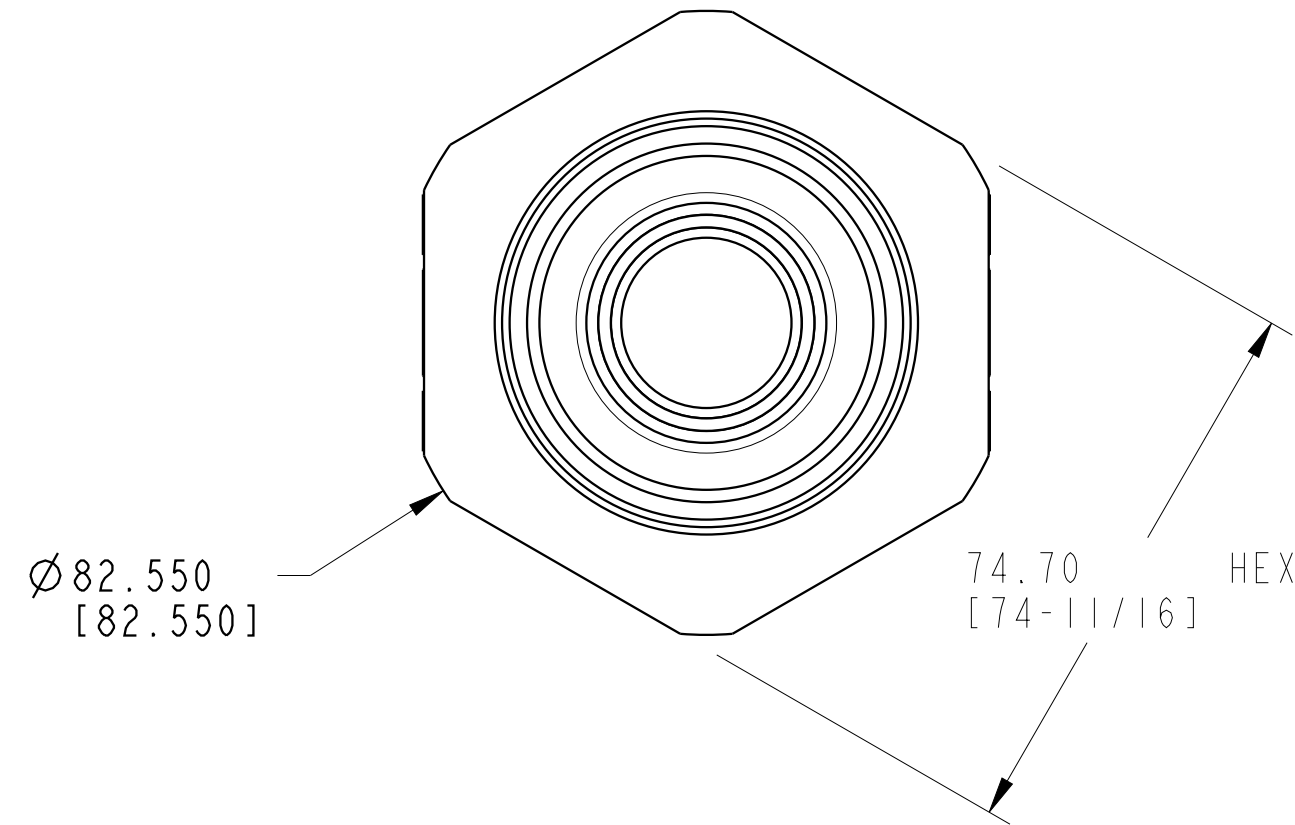
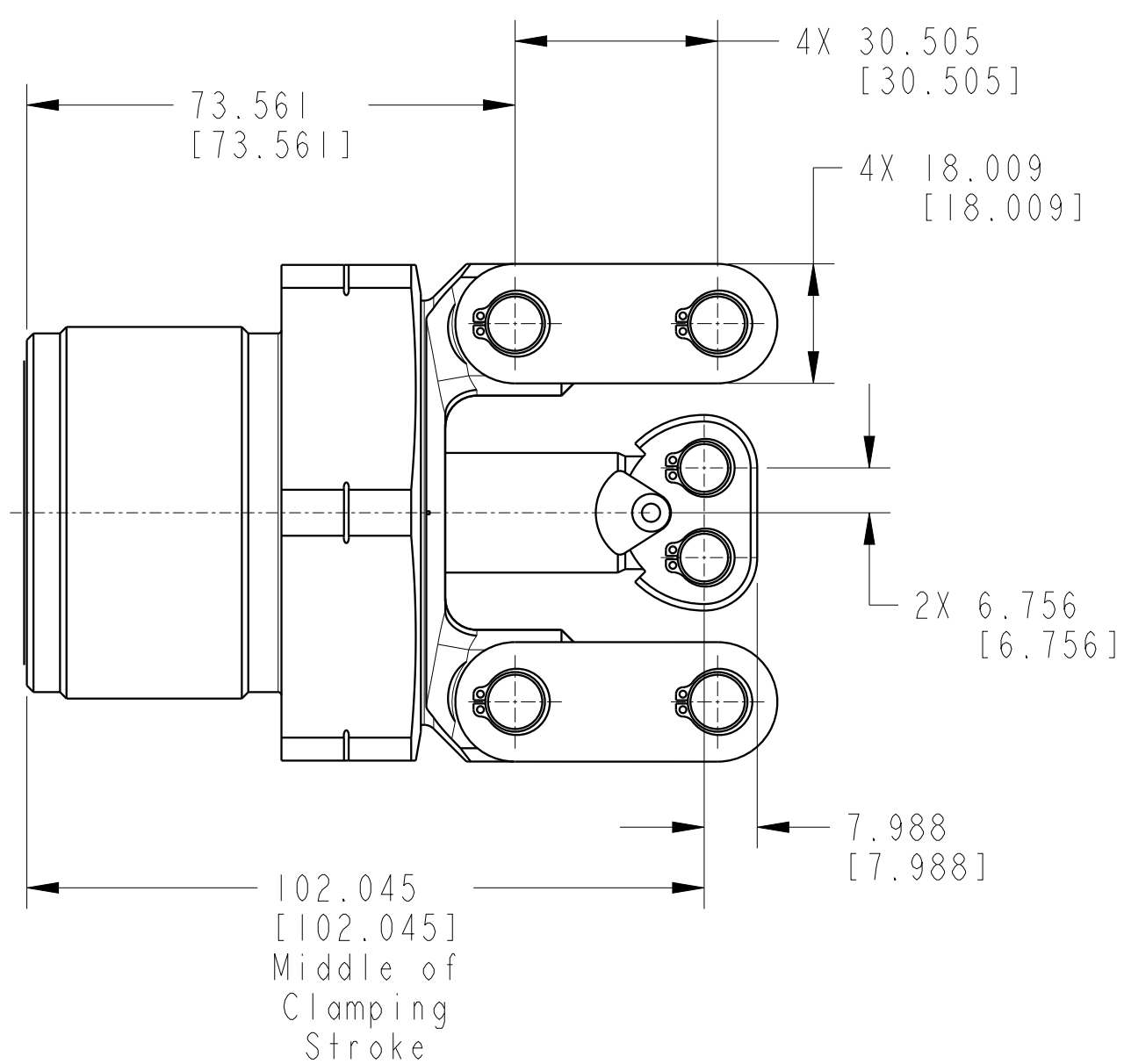
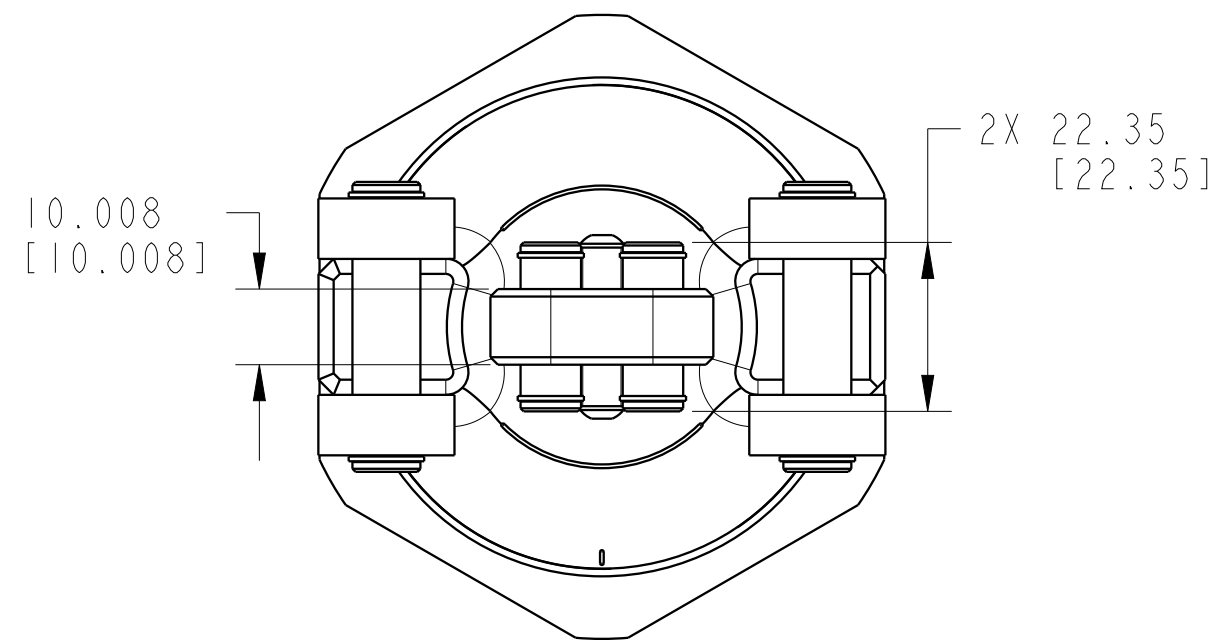
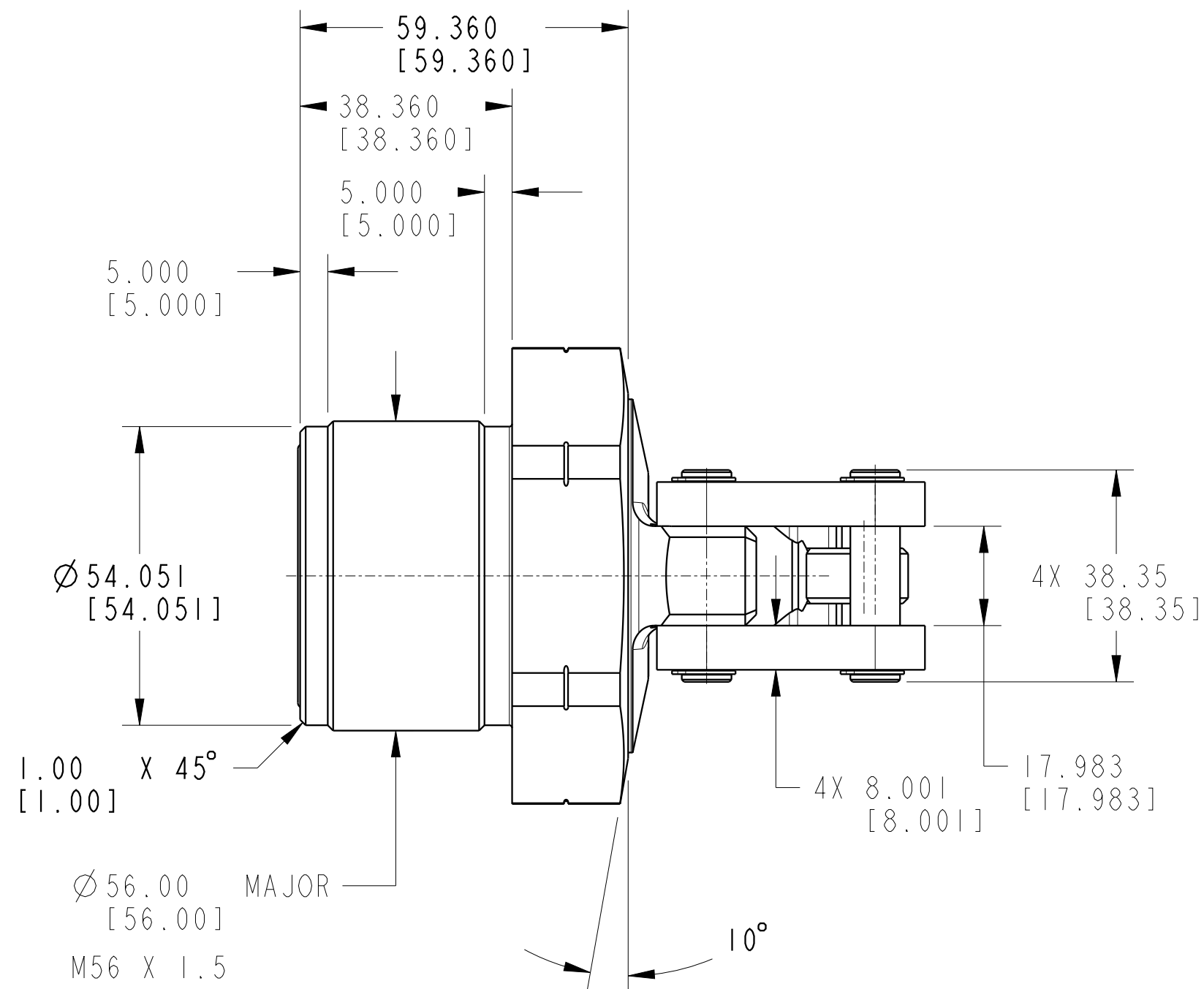
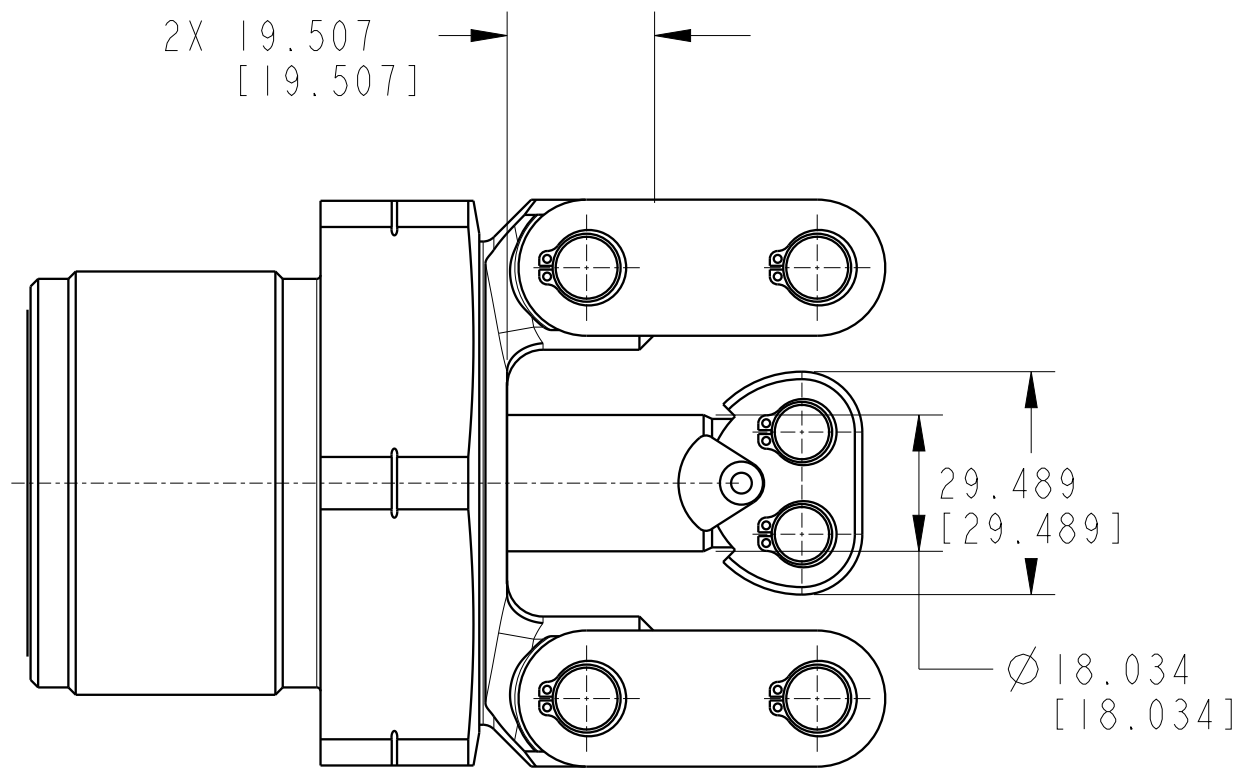


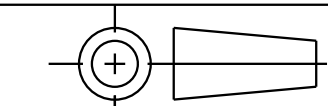
ILCMV41622240 REV B ECN 5240



**CAD CONTROL DRAWING**



VEKTEK, INC.  
1334 E. SIXTH AVE. P.O. BOX 625  
EMPORIA, KS. 66801 U.S.A.



|         |                        |  |            |         |                         |           |  |
|---------|------------------------|--|------------|---------|-------------------------|-----------|--|
| B       | 5240                   | RELEASE                                      | BDC        | 2/23/24 | 41622240                | A         | ILCMV, LC, CM, TL360-TWIN, DA, 11.57kN |
| REV     | IN ACCORDANCE WITH ECN | EFFECTIVE DATE                               | REVISED BY | DATE    | REFERENCE MODEL         | REF REV   |  |
| DRW BY: | A.THOMSEN              | DRAWING STATUS: Released                     |            |         | TOLERANCES DO NOT APPLY | UNITS     | SIZE                                   |
| DATE:   | 25-MAY-2020            | PRODUCTION APPROVED FOR RELEASED STATUS ONLY |            |         | DIMENSIONS ARE NOMINAL  | mm (inch) | D                                      |
|         |                        |  |            |         |                         |           | ILCMV41622240                          |
|         |                        |  |            |         |                         |           | REV B                                  |