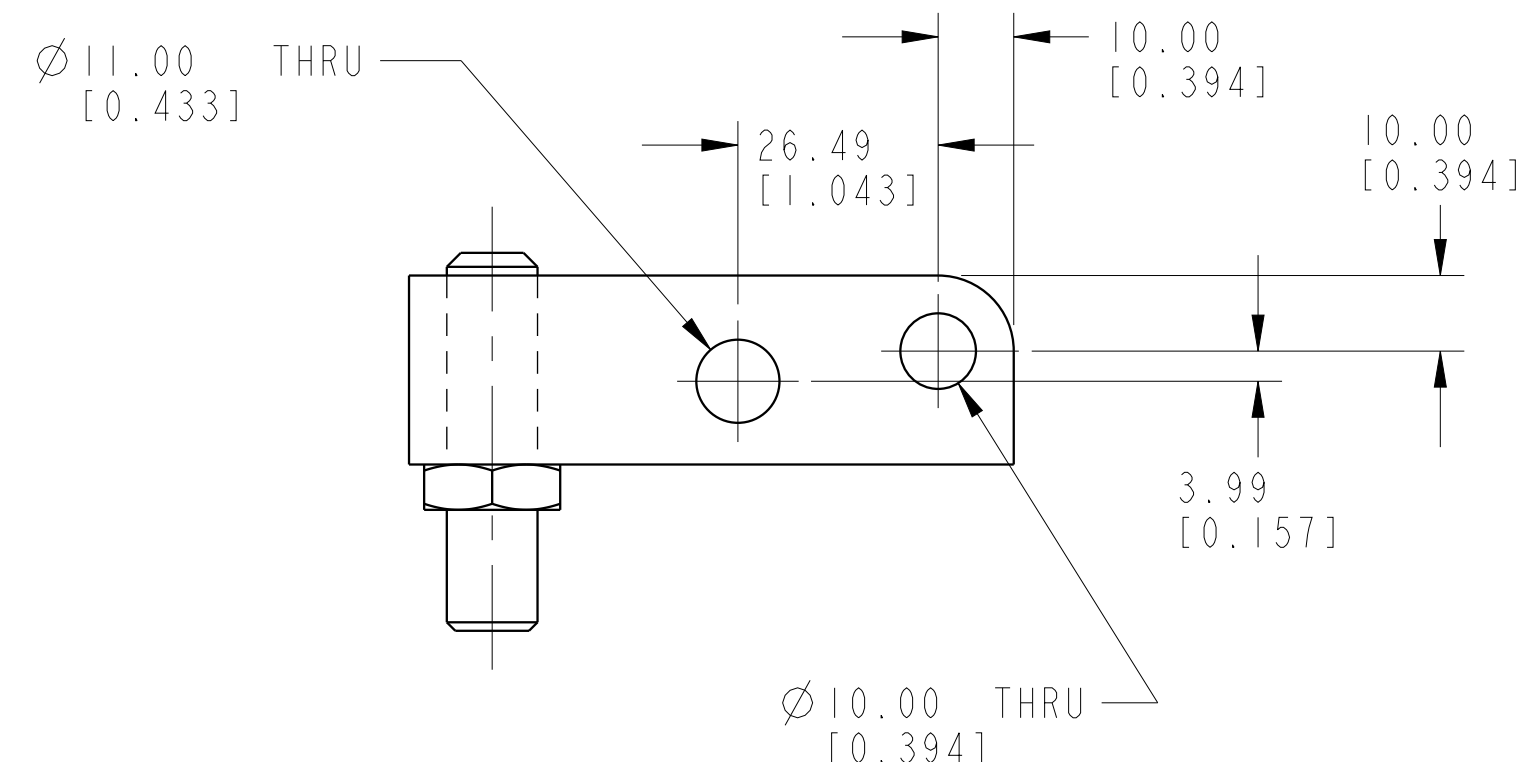
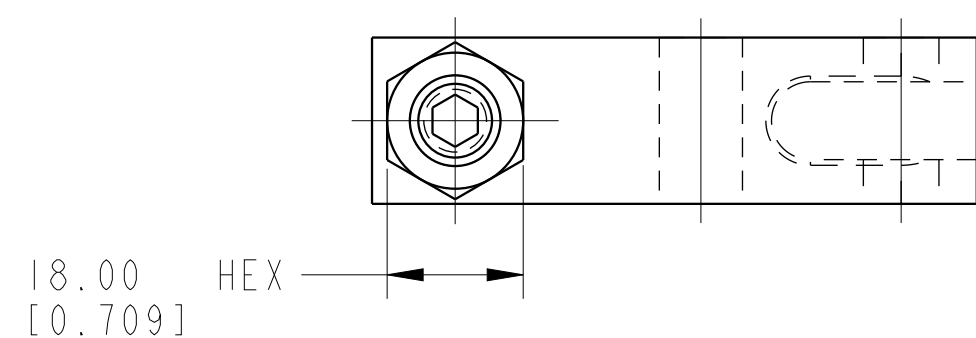
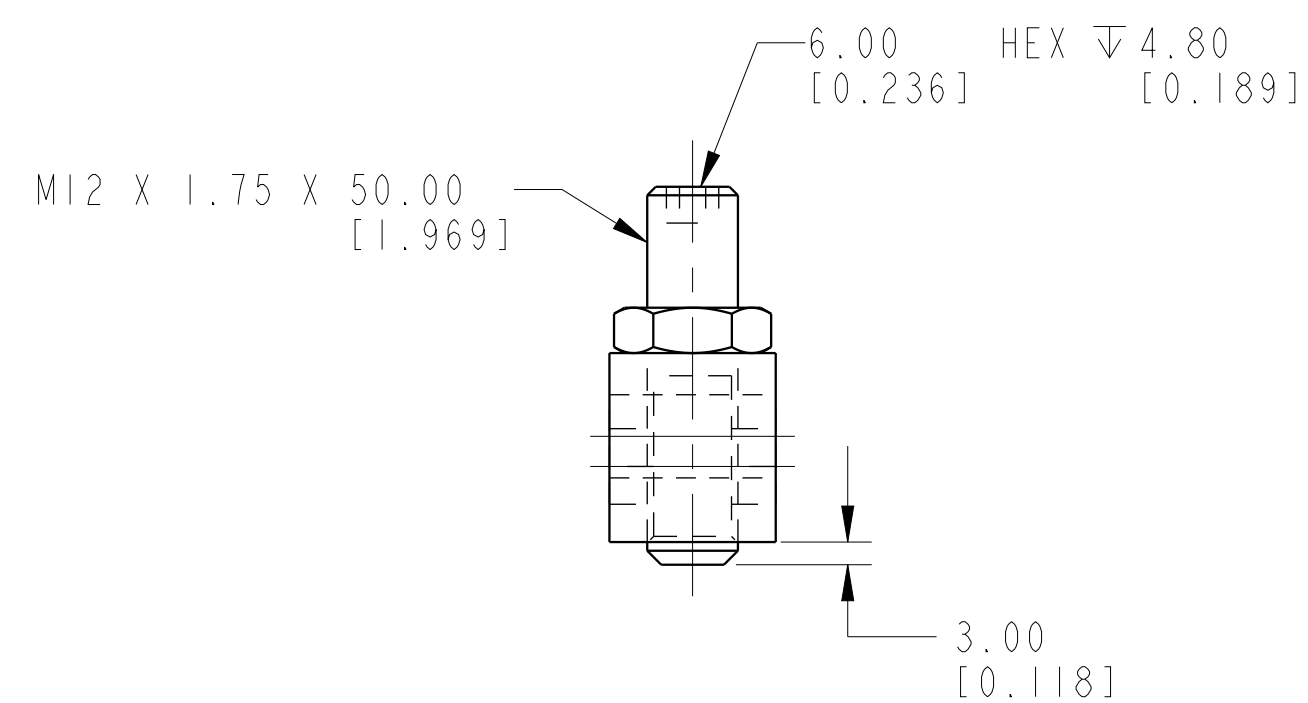
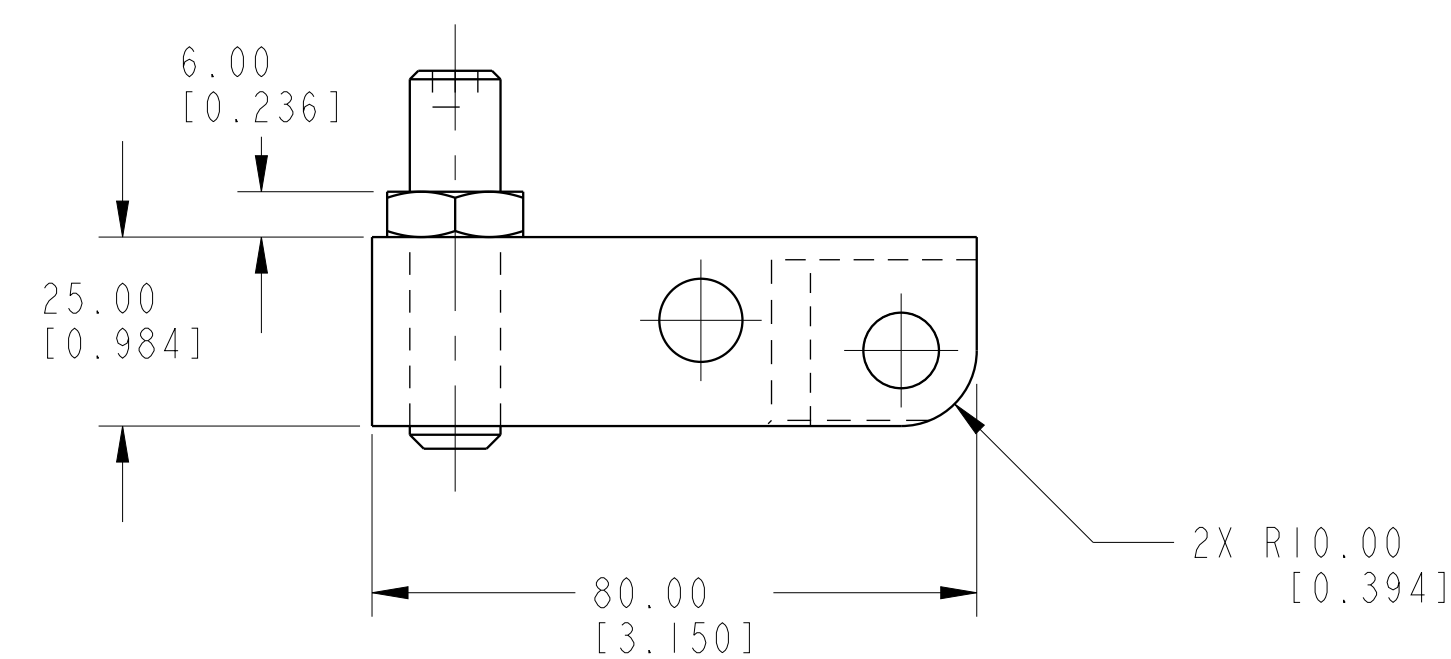
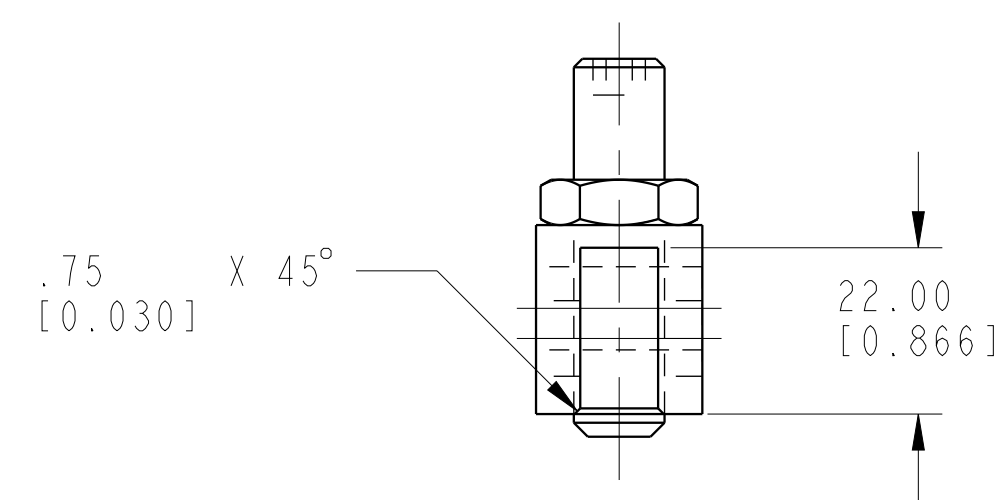
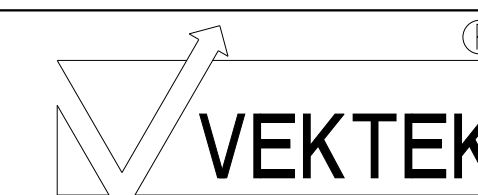


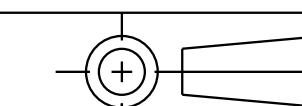
ILCMV91612203 REV B ECN 3615



CAD CONTROL
DRAWING



VEKTEK, INC.
1334 E. SIXTH AVE. P.O. BOX 625
EMPORIA, KS. 66801 U.S.A.



B	3615	RELEASE	NPETERS	11/7/18
REV	IN ACCORDANCE WITH ECN	EFFECTIVE DATE	REVISED BY	DATE
DRW BY:	BCD	DRAWING STATUS: Released		
DATE:	07-12-16	PRODUCTION APPROVED FOR RELEASED STATUS ONLY		

91612203	A
REFERENCE MODEL	REF REV
TOLERANCES DO NOT APPLY DIMENSIONS ARE NOMINAL	

LEVER, LC, TL360, 10.4kN
SIZE D
ILCMV91612203
REV B