

TORQUE TO
9 Nm
(80 IN. LBS.)

TORQUE TO
2.3 Nm
(20 IN. LBS.)

TORQUE TO
34 Nm
(25 FT. LBS.)

TORQUE TO
1.3 Nm
(11 IN. LBS.)

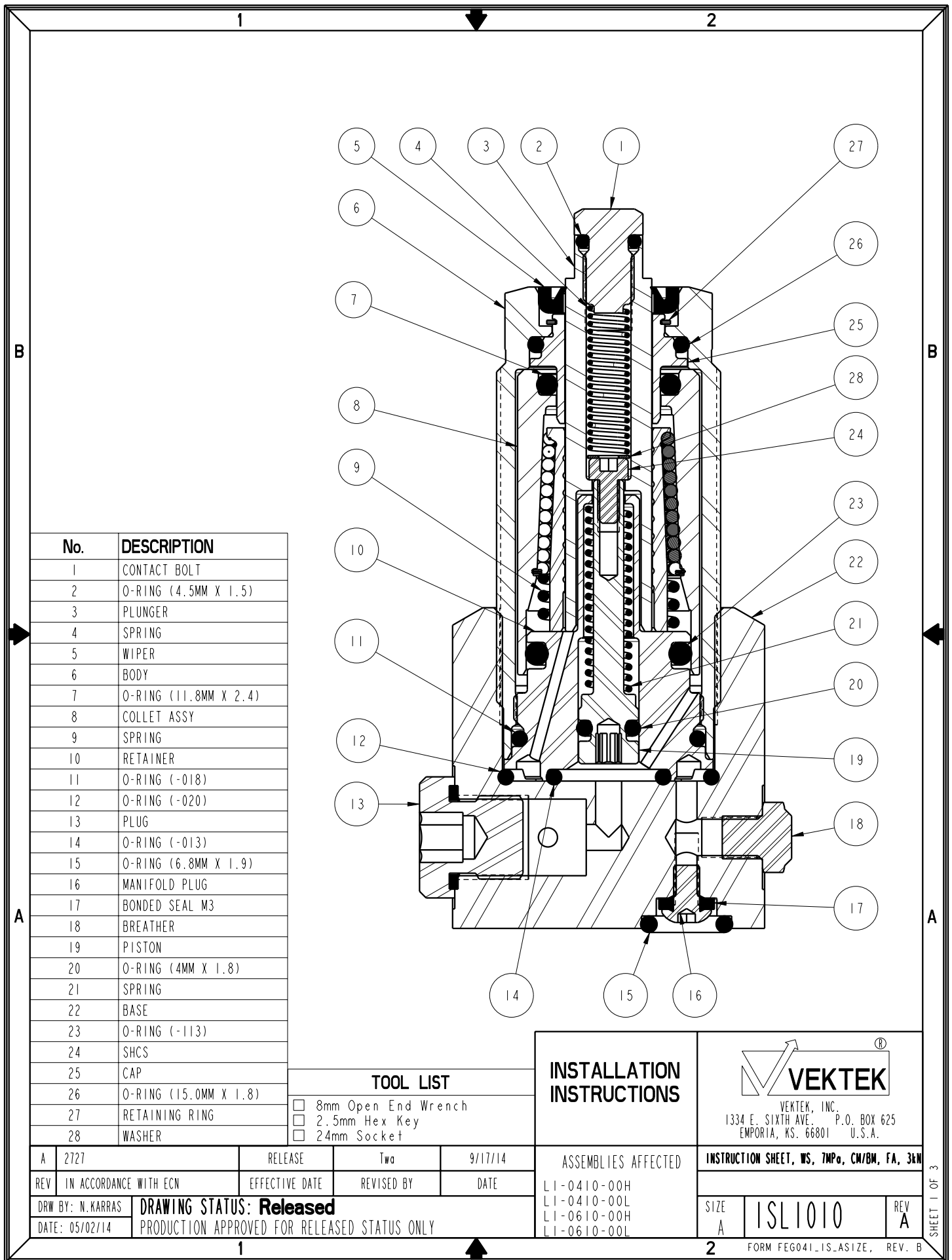
NO	QTY	PART NO	DESCRIPTION	STD SEAL KIT	LIGHT SPRING KIT	HEAVY SPRING KIT
1	2	21500019	SCREW, CAP, BTNH, M3 X 6, ALY			
2	1	23350102	SPRING, COMPRESSION		X	X
3	1	23350104	SPRING, COMPRESSION			X
4	2	39051116	O-RING, (6.8mm X 1.9)	X		
5	1	39051117	O-RING, (3.70 X 1.8)	X	X	X
6	1	39051118	O-RING, (4.5mm X 1.5)	X	X	X
7	1	39051120	O-RING, (-020)	X	X	X
8	1	39051124	O-RING, (-013)	X	X	X
9	1	39053051	WIPER, PRESS-IN, 10mm	X		
10	2	39055011	SEAL, BONDED, M3	X		
11	2	43068004	PLUG, SOCH, G1/8			
12	1	81000032	CONTACT BOLT, WS, 7MPa, 3kN			
13	1	91000046	BASE, WS, 7MPa, 3kN			
14	1	23350103	SPRING, COMPRESSION		X	
N/A	N/A	L6010007	KIT, SEAL, WS, 7MPa, CM/BM, 3kN	NOTED	N/A	N/A
N/A	N/A	L6110014	KIT, SPRING, WS, 7MPa, CM/BM, FA, 3kN	N/A	NOTED	N/A
N/A	N/A	L6110015	KIT, SPRING, WS, 7MPa, CM/BM, FA, 3kN	N/A	N/A	NOTED
N/A	N/A	ISL1010	INSTRUCTION SHEET, WS, 7MPa, CM/BM, FA, 3kN	N/A	N/A	N/A

See Instruction Sheet ISL1010 For Service Instructions.
Lubricate All Seals With Clean Hydraulic Oil Prior To Assembly.
Do Not Use Silicone Base Lubricants.



PARTS LIST	
	VEKTEK, INC. 1334 E. SIXTH AVE. P.O. BOX 625 EMPORIA, KS. 66801 U.S.A.
ASSEMBLIES AFFECTED	PARTS LIST, ASSY, WS, 7MPa, BM, FA, 3kN
L1-0610-00H L1-0610-00L	SIZE A LPL1018
	REV C

C	3849	RELEASE	MJUST	7/8/19
REV	IN ACCORDANCE WITH ECN	EFFECTIVE DATE	REVISED BY	DATE
DRW BY:	Twa	DRAWING STATUS: Released PRODUCTION APPROVED FOR RELEASED STATUS ONLY		
DATE:	05/01/14			



No.	DESCRIPTION
1	CONTACT BOLT
2	O-RING (4.5MM X 1.5)
3	PLUNGER
4	SPRING
5	WIPER
6	BODY
7	O-RING (11.8MM X 2.4)
8	COLLET ASSY
9	SPRING
10	RETAINER
11	O-RING (-018)
12	O-RING (-020)
13	PLUG
14	O-RING (-013)
15	O-RING (6.8MM X 1.9)
16	MANIFOLD PLUG
17	BONDED SEAL M3
18	BREATHER
19	PISTON
20	O-RING (4MM X 1.8)
21	SPRING
22	BASE
23	O-RING (-113)
24	SHCS
25	CAP
26	O-RING (15.0MM X 1.8)
27	RETAINING RING
28	WASHER

TOOL LIST			
<input type="checkbox"/>	8mm Open End Wrench		
<input type="checkbox"/>	2.5mm Hex Key		
<input type="checkbox"/>	24mm Socket		

INSTALLATION INSTRUCTIONS

VEKTEK, INC.
1334 E. SIXTH AVE. P.O. BOX 625
EMPORIA, KS. 66801 U.S.A.

A	2727	RELEASE	Two	9/17/14
REV	IN ACCORDANCE WITH ECN	EFFECTIVE DATE	REVISED BY	DATE
DRW BY:	N. KARRAS	DRAWING STATUS: Released		
DATE:	05/02/14	PRODUCTION APPROVED FOR RELEASED STATUS ONLY		

ASSEMBLIES AFFECTED
 LI-0410-00H
 LI-0410-00L
 LI-0610-00H
 LI-0610-00L

INSTRUCTION SHEET, WS, 7MPo, CW/BM, FA, 3kN			
SIZE	ISL1010	REV	A

SHEET 1 OF 3

