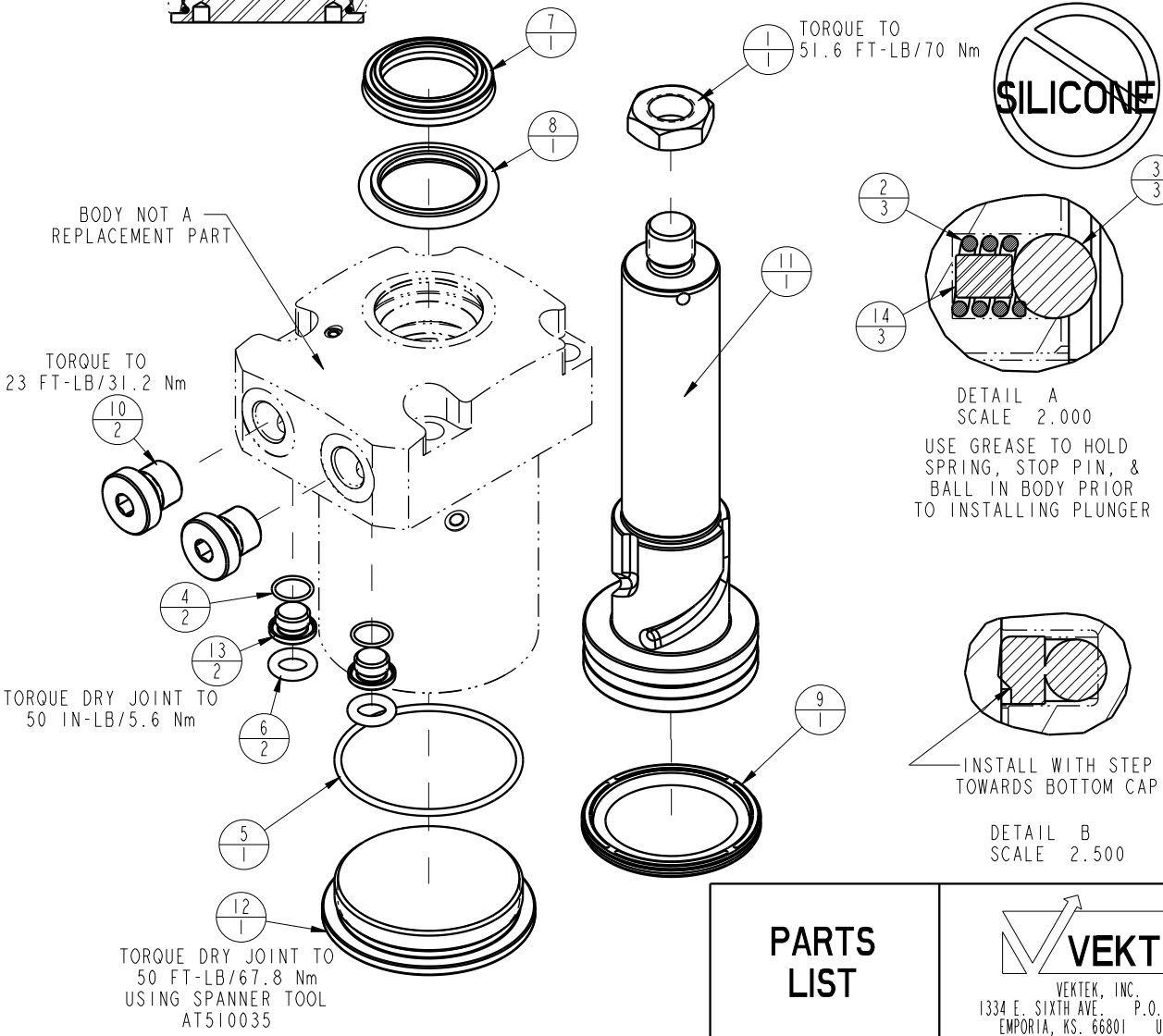


| NO  | QTY | PART NO  | DESCRIPTION                              | SEAL KIT |
|-----|-----|----------|--|----------|
| 1   | 1   | 21510003 | NUT, JAM, HEX, M14-1.50                  |          |
| 2   | 3   | 23350086 | SPRING, COMPRESSION                      | X        |
| 3   | 3   | 23650010 | BALL, TUNGSTEN-CARBIDE, 6mm              | X        |
| 4   | 2   | 39051080 | O-RING, (10mm X 1)                       | X        |
| 5   | 1   | 39051084 | O-RING, (50mm X 2)                       | X        |
| 6   | 2   | 39051088 | O-RING, (8mm X 3)                        | X        |
| 7   | 1   | 39053045 | SEAL, WIPER, SNAP IN, WED, 28, 94A, AU   | X        |
| 8   | 1   | 39056005 | SEAL, STEP, ROD, 28                      | X        |
| 9   | 1   | 39056024 | SEAL, CAP, PISTON, 50, 90A, AU GRPHT FLD | X        |
| 10  | 2   | 43068006 | PLUG, PORT, HOLLOW HEX, G1/4             |          |
| 11  | 1   | 81400144 | PLUNGER, SC, 7MPa, 50B, RH               |          |
| 12  | 1   | 81400154 | CAP, LC/SC, 7MPa, 50B                    |          |
| 13  | 2   | 81400201 | PLUG, MANIFOLD, 7MPa, M10                |          |
| 14  | 3   | 81400203 | PIN, STOP, BALL, METRIC, 6mm BALL        | X        |
| N/A | N/A | L6014500 | KIT, SEAL, SC, 7MPa, 50B                 | NOTED    |



|                     |  |       |
|---------------------|--|-------|
| <b>PARTS LIST</b>   |  |       |
|                     | VEKTEK, INC.<br>1334 E. SIXTH AVE. P.O. BOX 625<br>EMPORIA, KS. 66801 U.S.A. |       |
| ASSEMBLIES AFFECTED | PARTS LIST, ASSY, SC, TF, 7MPa, 50B, RH                                      |       |
| L1405000R           | *****  |       |
| SIZE A              | LPL1407  | REV B |

|                   |  |                |            |          |
|-------------------|--|----------------|------------|----------|
| B                 | 3273   | RELEASE        | JDW        | 08/15/18 |
| REV               | IN ACCORDANCE WITH ECN                       | EFFECTIVE DATE | REVISED BY | DATE     |
| DRW BY: QMITCHELL | <b>DRAWING STATUS: Released</b>              |                |            |          |
| DATE: 7-17-13     | PRODUCTION APPROVED FOR RELEASED STATUS ONLY |                |            |          |